

User Manual

8-input 2-output Professional Video Scaler AT-PRO82



FRONT



BACK



TABLE OF CONTENTS

1. Introduction	2
2. Specifications	2
3. Package Contents	3
4. Panel Descriptions	3
4.1 Front Panel	3
4.2 Rear Panel	4
5. Connection	5
6. Remote Control	5
7. IR Extender	6
7.1 Rear Panel IR Extender Ports	6
7.2 The IR Extender Components Setup	6
8. RS-232 Serial Interface	7
8.1 RS-232 Serial Interface Connect a PC or Control System	7
8.2 RS-232	7
8.3 Protocol Commands	8
9. RS-232 Protocol Commands	8
9.1 Standby Mode	8
9.2 Power Off Mode	8
9.3 Front Panel Lock	8
9.4 Unit Reset	8
10. Installation	8
11. Safety Information	9
12. Warranty	10
13. Atlona Product Registration	11

INTRODUCTION

Atlona Technologies' AT-PR082 is a unique 8-input 2-output Professional Video Scaler designed to work as a switcher and scaler for multiple Audio/Video sources and displays. This Atlona unit is capable of switching 2 x Composite Video, 2 x S-Video, 2 x Component and 2 x VGA, all with Stereo Audio signals going out to 2 x VGA with Stereo Audio Outputs. This gives the AT-PR082 the ability to switch between eight sources and two displays. Both outputs are mirrored and therefore the image would be identical out of both outputs. This device will support sharp and highly defined video in multiple resolutions of up to 1080p or 1920x1200. Along with supporting Pal and NTSC formatting, this unit has quick and easy installation. With manual, RS232, as well as IR Remote control options, Atlona's AT-PR082 Scaler/Switcher is perfect for all Video equipment and applications that using Multiple Video formats and signals such as Cable and Satellite receivers, VCRs, DVD Players, Set Top Boxes...etc.

SPECIFICATIONS

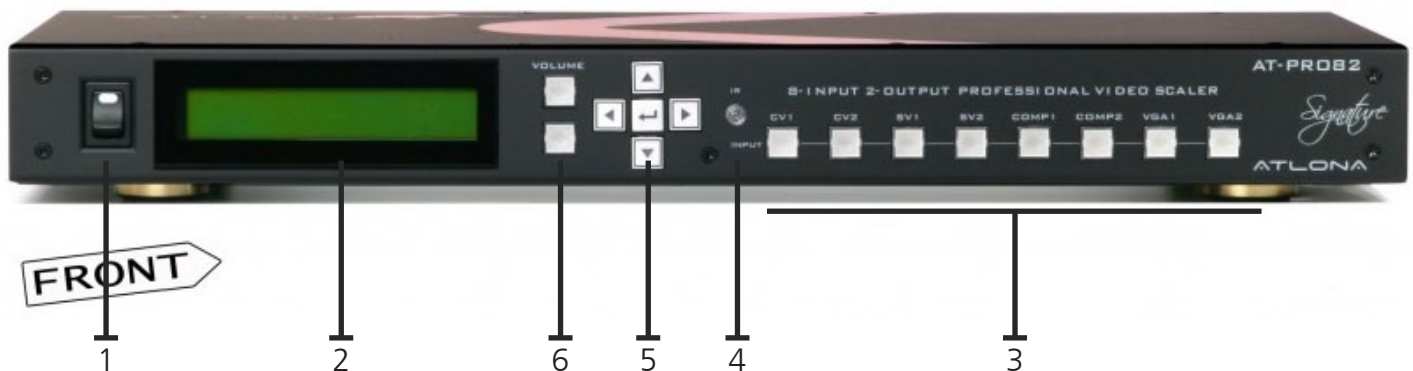
Inputs	2x Composite Video and Stereo Audio Inputs; 2x S-Video with Stereo Audio Inputs; 2x Component Video with Stereo Audio Inputs; 2x VGA with Stereo Audio Inputs
Outputs	2x VGA with Stereo Audio Outputs
Auto detection TV video system	NTSC-M 3.58, NTSC-J, 4.43, PAL-B-D-I-G-H-K, PAL-M, PAL-N, PAL-N COMB-N, SECAM (Impedance: 75 ohms)
OSD menu selections	Adjust Color: Contrast, Brightness, Sharpness, Level and Gain
Video bandwidth	250MHz, (-3 d B)
Audio bandwidth	>60MHz, (-3 d B)
Audio frequency response	20Hz ~ 20KHz
Input source resolutions	CVBS/S-Video for STANDARD TV VIDEO SYSTEM; Component Video (YPBPR) for 480p, 720p & 1080p; VGA for VGA (640x480), SVGA(800x600), XGA(1024x768), SXGA(1280x1024) or (1920x1200HD) Maximum
Unit output resolutions	VGA for SVGA, XGA, SXGA, WXGA, WSXGA or WUXGA (1920x1200HD)
Control	Direct Front Panel menu, RS-232, and IR Remote control
RS-232 control	9600 bps, No Parity, 8 bits, 1 Stop bit
Safety approvals	CE, FCC, RoHs(2002/95/EC)
Dimensions (LWH)	19" x 7.87" x 1.75" (482mm x 200mm x 44mm)
Power supply	12VDC, 2A (2.45A Max.) Universal Switch type 50/60Hz 100-230 VAC
Shipping weight	3.2kg



PACKAGE CONTENTS

- Atlona 8-input 2-output Professional Video Scaler (AT-PR082)
- Instruction Manual
- IR Remote Control
- Universal AC/DC power adapter: 12VDC

PANEL DESCRIPTIONS



1. **POWER SWITCH.** The power switch turns the unit ON/OFF. The LED will illuminate red to indicate the switcher is ON and receiving power
2. **INPUT SOURCES DISPLAY.** Inputs 1-8 LEDs illuminate green to indicate that a video source signal is present.
3. **SOURCE SELECT BUTTONS.** Outputs 1 and 2 source select buttons are provided for each destination.
Input 1 - Composite Video / Stereo Audio
Input 2 - Composite Video / Stereo Audio
Input 3 - S-Video / Stereo Audio
Input 4 - S-Video / Stereo Audio
Input 5 - Component Video (YPBPR) / Stereo Audio
Input 6 - Component Video (YPBPR) / Stereo Audio
Input 7- VGA (RGBHV)/Stereo Audio
Input 8- VGA (RGBHV)/Stereo Audio
4. **IR SENSOR.** The IR sensor receives IR commands.
5. **OSD CONTROL.** Adjust OSD on display via display screen.
6. **AUDIO OUTPUT VOLUME.** Adjust outputs Audio/Volume via LED display



1. 2x VGA/STEREO AUDIO OUTPUTS. Output 1 - VGA-RGBHV/Stereo Audio Output 2 - VGA-RGBHV / Stereo Audio
2. 2x OD3.5mm AUDIO OUTPUTS. 2x Stereo Audio outputs.
3. INPUT 7 & 8 VGA-AUDIO INPUTS.
Input 7 - VGA-RGBHV via 1x DB-15p connector
- Stereo Audio via 2x RCA connectors Input 8 - VGA-RGBHV via 1x DB-15p connector
- Stereo Audio via 2x RCA connectors
4. INPUTS 7 & 8: AUDIO with OD3.5mm Jack.
Input 7 - stereo audio(AR/AL) via OD3.5mm phone jack Input 8 - a stereo audio(AR/AL) via OD3.5mm phone jack
5. INPUTS 5 & 6:
Input 5 - Component(YPBPR) via 1x RCA connectors
- Stereo Audio via 2x RCA connectors
Input 6 - Component(YPBPR) via 1x RCA connectors
- Stereo Audio via 2x RCA connectors
6. INPUTS 3 & 4:
Input 3 - S-Video (Y/C) via 1x Mini din-4 Female connector
- Stereo Audio via 2x RCA connectors
Input 4 - S-Video (Y/C) via 1x Mini din-4 Female connector
- Stereo Audio via 2x RCA connectors
7. INPUTS 1 & 2:
Input 1 - Composite Video via 1x RCA connectors
- Stereo Audio via 2x RCA connectors Input 2 - Composite Video via 1x RCA connectors
- Stereo Audio via 2x RCA connectors
8. RS232 CONTROL. RS 232 control allows for interfacing to a PC.
9. IR EXTENDER CONTROL. IR Extender to extend distance of 300M
10. POWER INPUT. Use to plug in 12V DC power adaptor.



CONNECTION

Before making any connections to AT-PR082:

Be sure the mains voltage supply matches the label on the supplied plug-Pack (+/-10%) Make sure all devices are powered down

Ensure that all system grounds (earth) are connected to a common point.

Connect all sources to the Desired Video/Audio Inputs

Connect all displays to desired Audio/Video Outputs

Power on all sources and displays

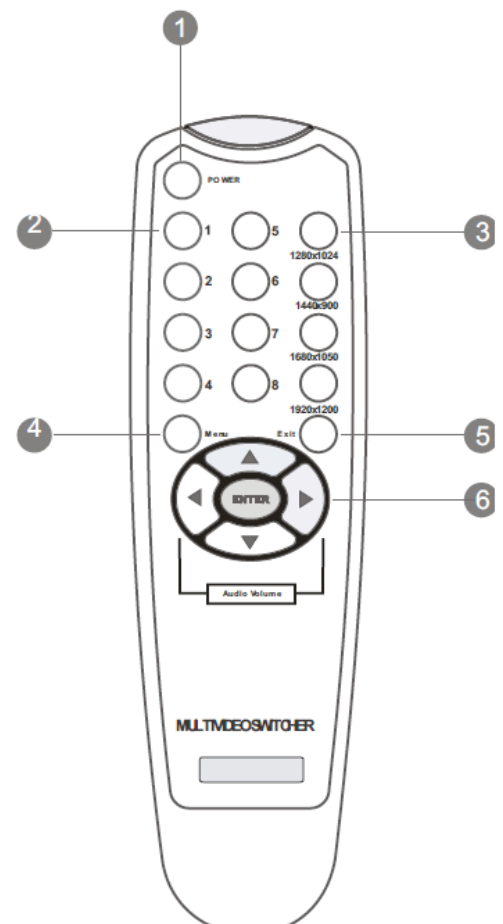
Set AT-PR082 Powerswitch to (ON)

When powering up, Atlona's Matrix switcher will return to its last used setting. For each destination output select the appropriate input source by using:

- The front panel input 1-8 select buttons
- RS 232
- IR remote control.

REMOTE CONTROL

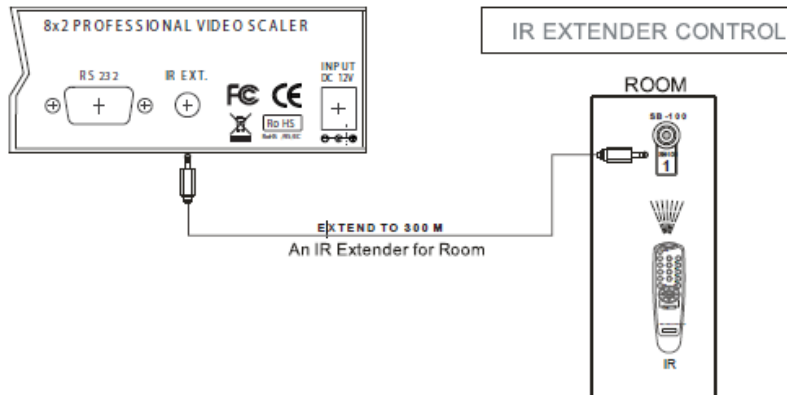
1. POWER ON/OFF
Press Power Button to switch ON and OFF
2. INPUT Selections
input- # 1 Composite Video / Stereo Audio
input - # 2 Composite Video / Stereo Audio
input - # 3 S-Video / Stereo Audio
input- #4 S-Video/Stereo Audio
input- # 5 Component Video (YPBPR) / Stereo Audio
input- # 6 Component Video (YPBPR) / Stereo Audio
input- # 7 VGA-RGBHV / Stereo Audio
input- # 8 VGA-RGBHV / Stereo Audio
3. SELECT VGA OUTPUT RESOLUTIONS
Select through VGA output resolutions:
 - SXGA 1280 x1024
 - WXGA 1440 x900
 - WSXGA+1680 x1050
 - WUXGA 1920 x1200
4. MEMU-OSD
Use OSD to setup or Adjust output resolutions and color.
5. EXIT - OSD
OSD to EXIT
6. AUDIO VALUE ADJUSTMENT OSD to setup or Adjust Audio Output Volume



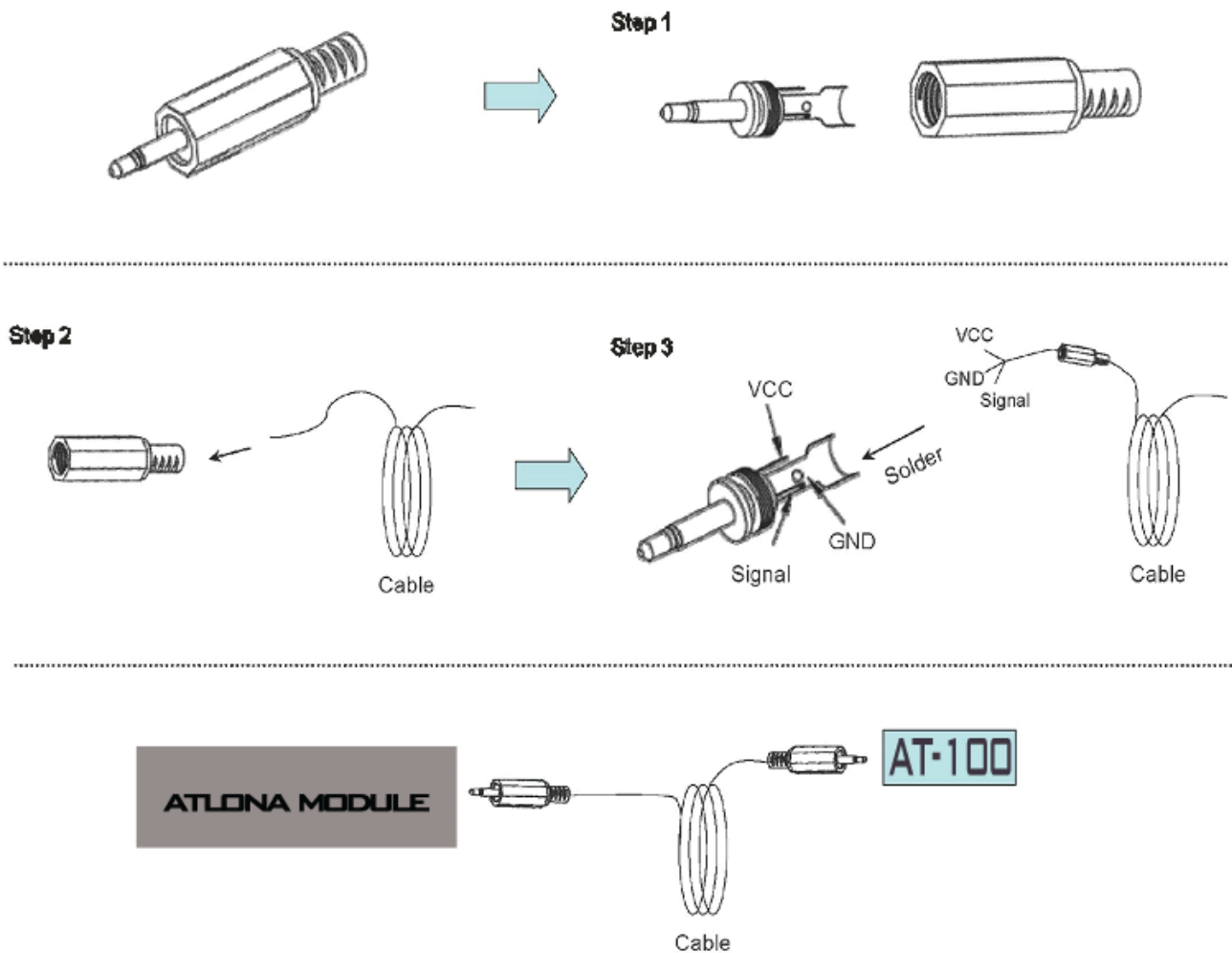


IR EXTENDER

1. Rear Panel IR Extender Ports

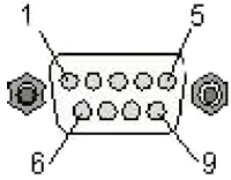


2. The IR Extender Components Setup



RS-232 SERIAL INTERFACE

1. RS-232 Serial Interface Connect a PC or Control System



Pin	RS-232	Definition
1	-	Not used
2	TX	Transmitter
3	RX	Receiver
4	-	Not used
5	GND	Ground
6	-	Not used
7	-	Not used
8	-	Not used
9	-	Not used

2. RS-232

Atlona's AT-PR082 can be controlled via the RS-232 serial control to allow interfacing with a PC, The serial communication parameters are 9600 baud, 8 bit, No Parity and 1 stop bit - this is often referred to as 9600 8N1.

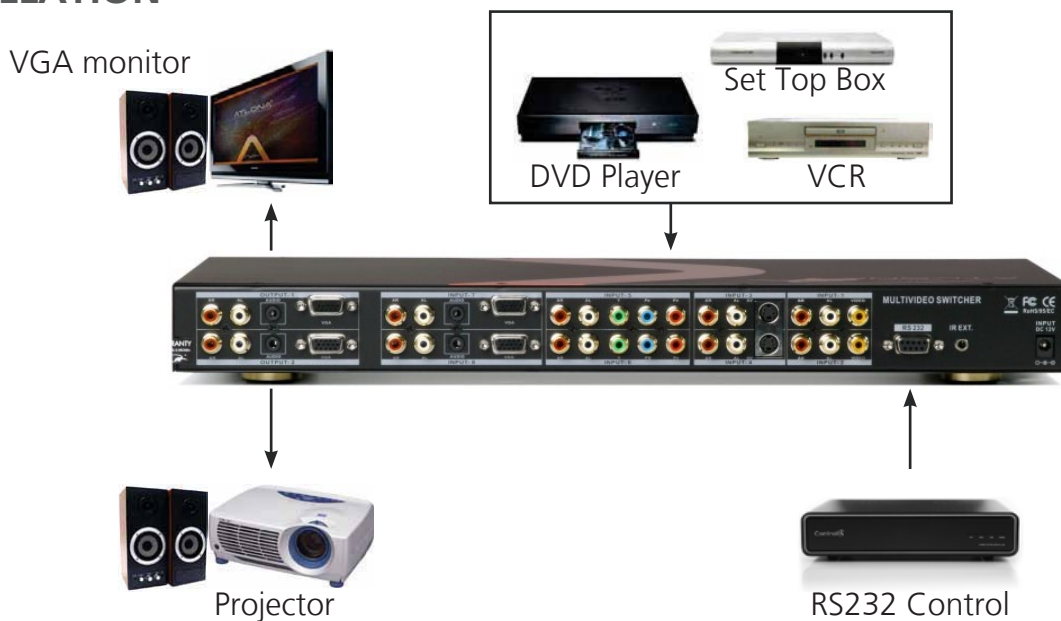
When the unit recognizes a complete command it will perform the requested action. There is no delimiter character required. This unit does not send out a message when a value is changed from the front panel or IR control. If the unit needs to be controlled via the front panel in addition to the RS232 control, regularly poll the unit status to ensure the control system accurately reflects the current settings, or similar third party control system.

RS-232 PROTOCOL COMMANDS

All#	Transfer all input signals to matching output channels.
[x1] AV[x2]	Transfer the audio and video signals from input channel [x1] to output channel [x2]. Example: input 5 needs to be send to output 6, the commands would be x5AVx6
[x1] AV[x2],[x3],[x4]	Transfer the audio and video signals from input channel [x1] to output channels [x2], [x3] and [x4].
[x1] A[x2]	Transfer the audio signals from input channel [x1] to output channel [x2]. Example: input 5 needs to be send to output 6, 8, 10, 15 the commands would be x5AVx6,x8,x10,x15
Status[x1]	Acquires the input channel to the output channel [x1]. Example: Statusx1
Status	Acquires the input channel to the output channel one by one
Save[Y]	Save the present operation to the preset command [Y]. [Y] Ranges from 0 to 9.
Recall[Y]	Recall the preset command [Y].
Vol000, Vol001, Vol002, Vol003, Vol004, Vol005	Volume adjustment on output
Clear[Y]	Clear the preset command [Y].

Note: Code entry is **CASE SENSITIVE**. Do not insert spaces between letter/number code entries.

INSTALLATION



SAFETY INFORMATION

Safeguards



To reduce the risk of electric shock, do not expose this product to rain or moisture



Do not modify the wall plug. Doing so will void the warranty and safety features.



If the wall plug does not fit into your local power socket, hire an electrician to replace your obsolete socket.



This equipment should be installed near the socket outlet and the device should be easily accessible in the case it requires disconnection.

Precautions

FCC regulations state that any unauthorized changes or modifications to this equipment, not expressly approved by the manufacturer, could void the user's authority to operate this equipment.

Operate this product using only the included external power supply. Use of other power supplies could impair performance, damage the product, or cause fires.

In the event of an electrostatic discharge this device may automatically turn off. If this occurs, unplug the device and plug it back in.

Protect and route power cords so they will not be stepped on or pinched by anything placed on or against them. Be especially careful of plug-ins or cord exit points from this product.

Avoid excessive humidity, sudden temperature changes or temperature extremes.

Keep this product away from wet locations such as bathtubs, sinks, laundries, wet basements, fish tanks, and swimming pools.

Use only accessories recommended by Atlona to avoid fire, shock, or other hazards.

Unplug the product before cleaning. Use a damp cloth for cleaning and not cleaning fluid or aerosols. Such products could enter the unit and cause damage, fire, or electric shock. Some substances may also mar the finish of the product.

Never open, remove unit panels, or make any adjustments not described in this manual. Attempting to do so could expose you to dangerous electrical shock or other hazards. It may also cause damage to your AT-PRO82. Opening the product will void the warranty.

Do not attempt to service the unit. Disconnect the product and contact your authorized Atlona reseller or contact Atlona directly.

WARRANTY

Limited Warranty

Atlona Technologies warrants that (a) its products (the AT-PRO82) will perform substantially in accordance with the accompanying written materials for a period of 3 years from the date of receipt and (b) that the product will be free from defects in materials and workmanship under normal use and service for a period of 3 years. In the event applicable law imposes any implied warranties, the implied warranty period is limited to 3 years from the date of receipt. Some jurisdictions do not allow such limitations on duration of an implied warranty, so the above limitation may not apply to customers that fall within those areas.

Customer Remedies

Atlona Technologies' and its suppliers' entire liability and Customer's exclusive remedy shall be, at Atlona Technologies' decision, either return of the price paid for the product, repair, or replacement of the product that does not meet this Limited Warranty and which is returned to Atlona Technologies with a copy of the Customer's receipt. This Limited Warranty is void if failure of the product has resulted from accident, abuse, misapplication, or natural occurrence. In example but not limited to: power surges (electrical storms, local power outage), dropping the product (or items on the product), contact with fluids, and physical misconduct (i.e. kicking or punching). Any replacement product will be warranted for the remainder of the original warranty period.

No other warranties

To the maximum extent permitted by applicable law, Atlona Technologies and its suppliers disclaim all other warranties, either expressed or implied, including, but not limited to, implied warranties of merchantability and fitness for a particular purpose, with regard to the product and any related written materials. This Limited Warranty gives customer specific legal rights. Customers may have other rights depending on the jurisdiction.

No liability for damages

To the maximum extent permitted by applicable law, in no event shall Atlona Technologies or its suppliers be liable for any damages arising out of the use of or inability to use this product, even if Atlona Technologies has been advised of the possibility of such damages. Such damages include but are not limited to: special, incidental, consequential, or indirect damages for personal injury, loss of business profits, business interruption, loss of business information, or any other pecuniary loss. Atlona Technologies' and its suppliers' entire liability under any provision of this agreement shall be limited to the amount actually paid by you for the product. Some Jurisdictions do not allow the exclusion or limitation of liability for consequential or incidental damage. The above limitations may not apply to you in such jurisdictional cases.

ATLONA PRODUCT REGISTRATION

Thank you for purchasing this Atlona product. - We hope you enjoy it and will take an extra few moments to register your new purchase.

Registration creates an ownership record if your product is lost or stolen and helps ensure you'll receive notification of performance issues and firmware updates.

At Atlona, we respect and protect your privacy, assuring you that your registration information is completely secure. Atlona product registration is completely voluntary and failure to register will not diminish your limited warranty rights.

To register go to: <http://www.atlona.com/registration>