

## 8 x 1 DVI Switcher with Stereo Audio AT-DVI-81A



### User Manual

## TABLE OF CONTENTS

1. Introduction	2
2. Features	2
3. Package Contents	2
4. Specifications	3
5. Panel Descriptions	3
5.1. Front Panel	3
5.2. Rear Panel	4
6. Remote Control	5
7. IR Extender	5
7.1. IR Extender Connection	5
7.2. IR Extender Package	6
8. RS232	6
8.1. RS-232 Serial Interface	6
8.2. RS232	7
8.3. RS232 Commands	7
9. Safety Information	8
10. Warranty	9
11. Atlona Product Registration	10

## INTRODUCTION

The Atlona AT-DVI-81A is 8 inputs and 1 output DVI Switcher with Stereo Audio. The switcher is designed to route up to 8 x DVI sources with Audio to a single display. The DVI-81A is capable of passing extremely high resolutions up to 1920x1200 or 1080p. Each input is featured with a built-in repeater which will help to keep the signal quality the same as it was originally.

The DVI switcher is fully HDCP compliant, therefore could be used along with HDMI sources, DVI/HDMI adapters or cables will be required.

The Atlona 8x1 DVI Switcher could be controlled though IR remote, RS232 port or manually via buttons selection on the front panel of the switch.

*Note: For applications where customer would need the computer to sense a monitor at all the time even when switcher is switched to a different computer, we recommend to use our EDID Recorder, AT-DVISync. User would require 1 x DVISync per computer.*

## FEATURES

- The Atlona AT-DVI-81A is designed to switch up to 8 x computers to 1 x monitor.
- Switcher is featured with 8 x Stereo audio inputs and 1 x Output
- Switcher is able to support high resolutions up to 1920x1200 (WUXGA) or 1080p (1920x1080)
- AT-DVI-81A is fully HDCP compliant and therefore can also work with HDMI sources (DVI/HDMI adapters will be required)
- High Bandwidth Support up to 6.75Gbps allows high motion video and high resolutions to be passed though without any delay or degradation
- Support wide range of Computer resolutions from VGA to WUXGA (640x480 ~ 1920x1200)
- HDTV resolutions: 480i/480p, 576i/576p, 720p, 1080i & 1080p (50/60Hz)
- Switcher is compatible with all DVI enabled computers and monitors (DVI output has to be digital only)
- Support Digital Video TMDS formats in Deep Color up to 36bits
- IR input jack, allows users to extend IR signal up to 1000ft from the switch
- Various control Options: IR, RS232 and Manual Push Button on the front panel
- Rack Mountable, comes with a set of rack ears – 1U

## PACKAGE CONTENT

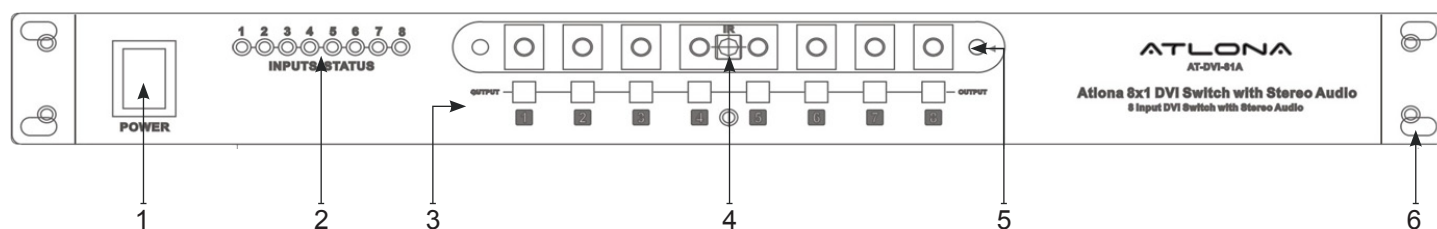
- 1 x AT-DVI-81A (8x1 DVI Switch with Stereo Audio)
- 1 x Manual
- 1 x IR Remote Control
- 19 inch Rack Ears - 1U
- IR Extender allows user to connect an IR extension cable to the switcher and control the switch from up to 1000ft away.
- RS232 Cable
- Power Supply 12VDC, Universal Type 50/60Hz, 100~230 VAC

## SPECIFICATIONS

Type of a Switcher	8 input to 1 output DVI with Stereo Audio Switch	
DVI Input	DVI-I (Digital Only)	
Stereo Audio Input	1/8-inch (3.5mm)	
Resolution support	up to 1920x1200 or 1080p	
HDCP	Compliant	
EDID	Compliant	
Input Signals	Video (TMDS) 0.5~1.0Vpp, DDC 5Vpp	
Various video input interface supporting digital video standards	RGB/YCbCr	24/30/36-bits
	YCbCr	8/10/12/16/20/24-bits
	Double data rate interface for RGB/YCbCr	12/15/18-bits
Various control Options	IR, RS232 and Manual Push Button on the front panel	
Data Rates	250Mbps to 6.75Gbps	
Infrared frequency	38 KHz	
Safety Approvals	CE, FCC, RoHs (2002/95/EC)	
Dimensions (LWH)	19"x 7.87" x 1.75" (482mm x 200mm x 44mm) – 1U	
Power Supply	DC12V / 1.25A (110~240V)	
Shipping Weight	5.80 lb	

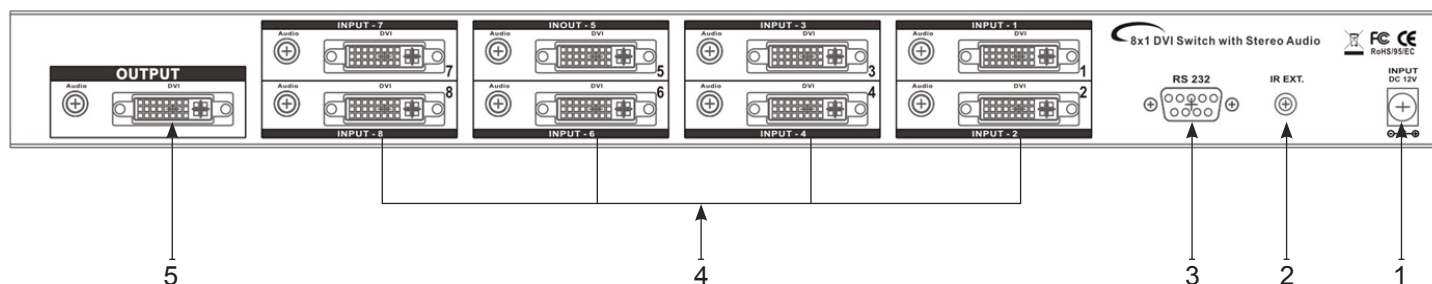
## PANEL DESCRIPTIONS

### 1. Front Panel



1. POWER ON SWITCH. The power switch turns the unit ON and OFF. The LED will illuminate red to indicate that the switcher is ON.
2. INPUT SOURCES STATUS LED'S. Input sources 1 through 8 LED will illuminate blue to indicate that a Digital source is present on that input.
3. SOURCES SELECT BUTTONS. 8 x buttons for selecting desired DVI input
4. IR SENSOR. The IR sensor receives IR commands from the IR remote control.
5. OUTPUT STATUS WITH LED DISPLAY. Output Status via LED to reveal 1~8 input sources.
6. 19 INCH EAR MOUNT PAIR. 19 -inch Rack Ears - 1U

## 2. Rear Panel



### 1. DC POWER INPUT

12V/1.25A, center positive power input. Please ensure that plug is always securely connected to the switcher. Atlona only approves a use of the included power supply, if user needs to use a different power supply, Atlona has to provide an official approval, and otherwise the warranty will be VOID.

Power Jack:

DC Jack - inner OD 2.1mm (+)

Outside OD 5.5mm (GND)

Power input - 12VDC, 1.25A

### 2. IR EXTENDER CONTROL

IR input, allows user to connect an IR cable up to 1000ft to be able to control the unit from far away.

IR Extender Jack:

Female Jack - inner OD 3.5 mm (1/8-inch)

### 3. RS 232 CONNECTION

RS 232 control port allows users to control AT-DVI-81A through a 3rd party control system or through the computer directly.

Port Specifications: DB-9pin Female connector

### 4. INPUTS - 1 ~ 8 DVI and Stereo Audio

Connect up to 8 x DVI with Stereo Audio Sources. DVI inputs are (DVI-I); however will only take Digital Signal.

Stereo Audio inputs are 1/8-inch (3.5mm)

### 5. OUTPUTS - 1 x DVI and Stereo Audio

Connect 1 x DVI with Stereo Audio Display. DVI output is (DVI-I); however will only take Digital Signal.

Stereo Audio output is 1/8-inch (3.5mm)

## REMOTE CONTROL

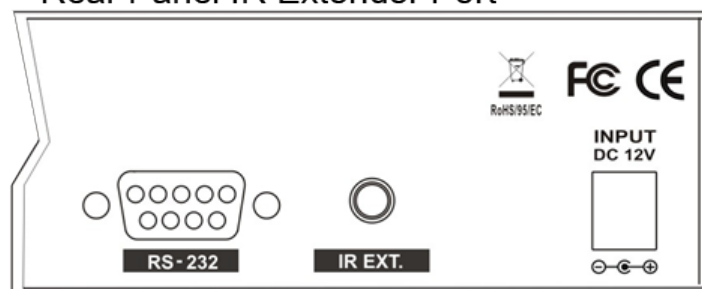


1. SWITCH POWER ON or OFF
2. PORT 1 ~ 8 INPUT SOURCES SELECTION
  - # 1 - INPUT-1 Select input 1 source with selection button
  - # 2 - INPUT-2 Select input 2 source with selection button
  - # 3 - INPUT-3 Select input 3 source with selection button
  - # 4 - INPUT-4 Select input 4 source with selection button
  - # 5 - INPUT-5 Select input 5 source with selection button
  - # 6 - INPUT-6 Select input 6 source with selection button
  - # 7 - INPUT-7 Select input 7 source with selection button
  - # 8 - INPUT-8 Select input 8 source with selection button

## IR EXTENDER

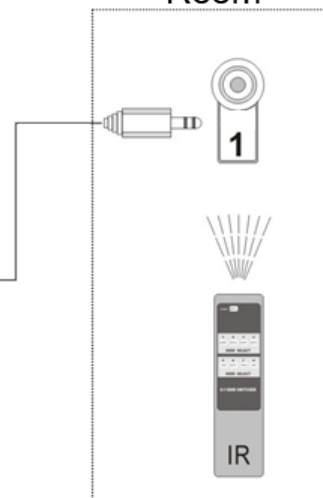
### 1. IR Extender Connection

#### Rear Panel IR Extender Port

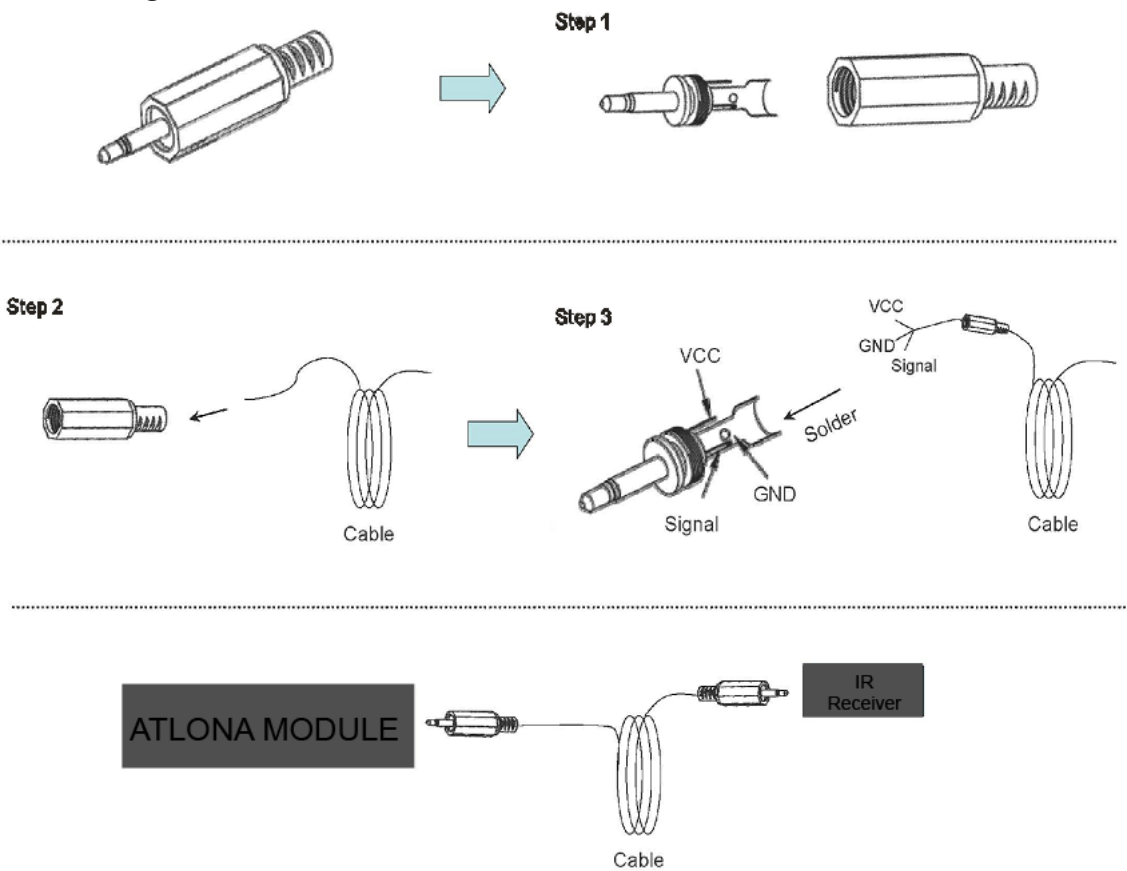


Distance maximum 300M

#### Room



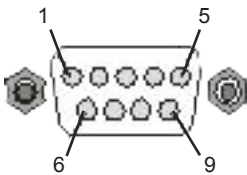
2. IR Extender Package



RS232

1. RS-232 Serial Interface

RS-232 serial interface allows connecting a control system or a computer to it for controlling the switcher



Pin	RS-232	Definition
1	-	Not used
2	Tx	Transmitter
3	Rx	Receiver
4	-	Not used
5	GND	Ground
6	-	Not used
7	-	Not used
8	-	Not used
9	-	Not used

## 2. RS232

The Atlona switcher is featured with RS232 control port which allows users to control the switch through a control system or from the computer.

The serial communication parameters are 9600 baud rate, 8 bit, No Parity and 1 stop bit

When the unit recognizes a complete command it will perform the requested action - there is no delimiter character required.

*Note: The unit does not send out a feedback message when a value is changed from the front panel or by IR control. If the switcher needs to be controlled through front panel in addition to the RS232 control, user should regularly verify the unit's status to ensure the control system accurately reflects the current settings.*

## 3. RS-232 Commands

Baud Rate : 9600 bps

Data Bit :8 bits

Parity : None

Stop Bit :1 bit

- Each command is terminated with a Carriage Return
- Each feedback is terminated with a Carriage Return
- Code entry is CASE SENSITIVE.
- Do not insert spaces between letter/number code entries.

Command	Description	Feedback
PWON	Power ON	PWON
PWOFF	Power OFF	PWOFF
All#	Reset all input signals to matching output. (Input 1 to Output 1, Input 2 to Output 2,etc...)	All#
x1AVx1	Switch specified input to the output. If input is 5, then command would be x5AVx1	x1AVx1
Status	Display input currently routed to the output	x3AVx1
Mreset	Reset device to manufacture default	Mreset

**Note1:** Feedback for a command repeats the original command. Example, if x1AVx1 is a command, the feedback is the same and if the command is x2AVx1, the feedback would also be x2AVx1

**Note2:** If command fails, the feedback should be "Command FAILED"

## SAFETY INFORMATION

### Safeguards



To reduce the risk of electric shock, do not expose this product to rain or moisture



Do not modify the wall plug. Doing so will void the warranty and safety features.



If the wall plug does not fit into your local power socket, hire an electrician to replace your obsolete socket.



This equipment should be installed near the socket outlet and the device should be easily accessible in the case it requires disconnection.

### Precautions

FCC regulations state that any unauthorized changes or modifications to this equipment, not expressly approved by the manufacturer, could void the user's authority to operate this equipment.

Operate this product using only the included external power supply. Use of other power supplies could impair performance, damage the product, or cause fires.

In the event of an electrostatic discharge this device may automatically turn off. If this occurs, unplug the device and plug it back in.

Protect and route power cords so they will not be stepped on or pinched by anything placed on or against them. Be especially careful of plug-ins or cord exit points from this product.

Avoid excessive humidity, sudden temperature changes or temperature extremes.

Keep this product away from wet locations such as bathtubs, sinks, laundries, wet basements, fish tanks, and swimming pools.

Use only accessories recommended by Atlona to avoid fire, shock, or other hazards.

Unplug the product before cleaning. Use a damp cloth for cleaning and not cleaning fluid or aerosols.

Such products could enter the unit and cause damage, fire, or electric shock. Some substances may also mar the finish of the product.

Never open, remove unit panels, or make any adjustments not described in this manual. Attempting to do so could expose you to dangerous electrical shock or other hazards. It may also cause damage to your AT-DVI-81A. Opening the product will void the warranty.

Do not attempt to service the unit. Disconnect the product and contact your authorized Atlona reseller or contact Atlona directly.

## **WARRANTY**

### **Limited Warranty**

Atlona Technologies warrants that (a) its products (the AT-DVI-81A) will perform substantially in accordance with the accompanying written materials for a period of 3 years from the date of receipt and (b) that the product will be free from defects in materials and workmanship under normal use and service for a period of 3 years. In the event applicable law imposes any implied warranties, the implied warranty period is limited to 3 years from the date of receipt. Some jurisdictions do not allow such limitations on duration of an implied warranty, so the above limitation may not apply to customers that fall within those areas.

### **Customer Remedies**

Atlona Technologies' and its suppliers' entire liability and Customer's exclusive remedy shall be, at Atlona Technologies' decision, either return of the price paid for the product, repair, or replacement of the product that does not meet this Limited Warranty and which is returned to Atlona Technologies with a copy of the Customer's receipt. This Limited Warranty is void if failure of the product has resulted from accident, abuse, misapplication, or natural occurrence. In example but not limited to: power surges (electrical storms, local power outage), dropping the product (or items on the product), contact with fluids, and physical misconduct (i.e. kicking or punching). Any replacement product will be warranted for the remainder of the original warranty period.

### **No other warranties**

To the maximum extent permitted by applicable law, Atlona Technologies and its suppliers disclaim all other warranties, either expressed or implied, including, but not limited to, implied warranties of merchantability and fitness for a particular purpose, with regard to the product and any related written materials. This Limited Warranty gives customer specific legal rights. Customers may have other rights depending on the jurisdiction.

### **No liability for damages**

To the maximum extent permitted by applicable law, in no event shall Atlona Technologies or its suppliers be liable for any damages arising out of the use of or inability to use this product, even if Atlona Technologies has been advised of the possibility of such damages. Such damages include but are not limited to: special, incidental, consequential, or indirect damages for personal injury, loss of business profits, business interruption, loss of business information, or any other pecuniary loss.

Atlona Technologies' and its suppliers' entire liability under any provision of this agreement shall be limited to the amount actually paid by you for the product. Some Jurisdictions do not allow the exclusion or limitation of liability for consequential or incidental damage. The above limitations may not apply to you in such jurisdictional cases.

## ATLONA PRODUCT REGISTRATION

Thank you for purchasing this Atlona product. - We hope you enjoy it and will take an extra few moments to register your new purchase.

Registration creates an ownership record if your product is lost or stolen and helps ensure you'll receive notification of performance issues and firmware updates.

At Atlona, we respect and protect your privacy, assuring you that your registration information is completely secure. Atlona product registration is completely voluntary and failure to register will not diminish your limited warranty rights.

To register go to: ***<http://www.atlona.com/registration>***