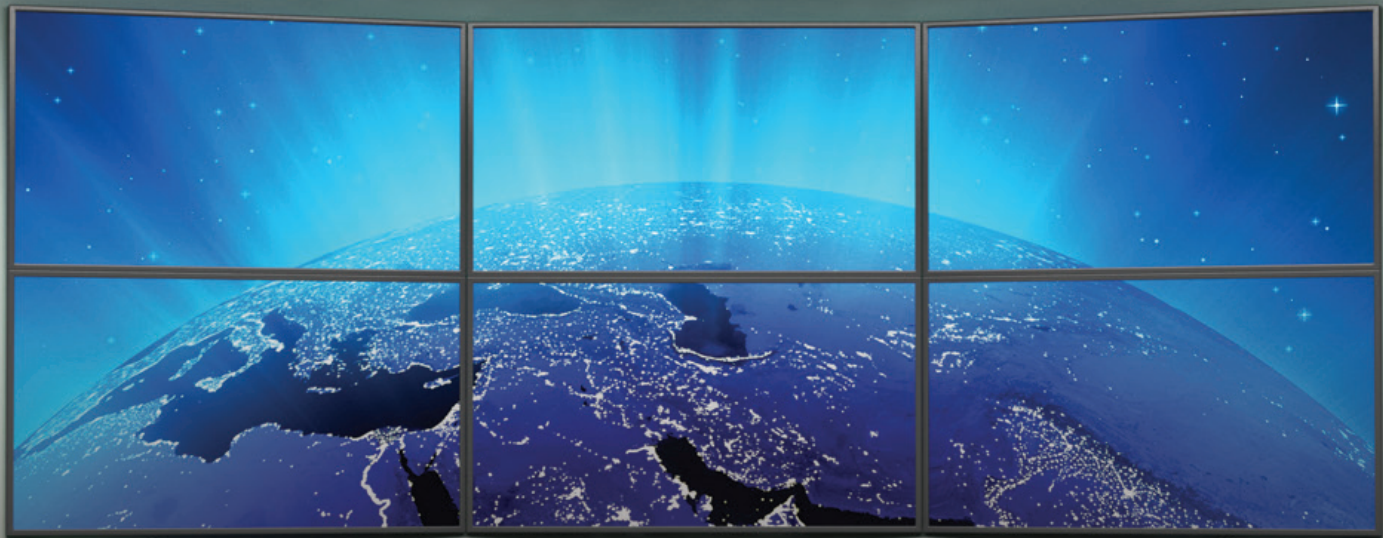


Complete AV Solutions for Classroom, Conference Room, Huddle Room and Training Room Solutions



10 Year Warranty, Educational Programs, Design Services and
Dedicated 7 Days a Week Support



Digital Classroom Solution

Challenge

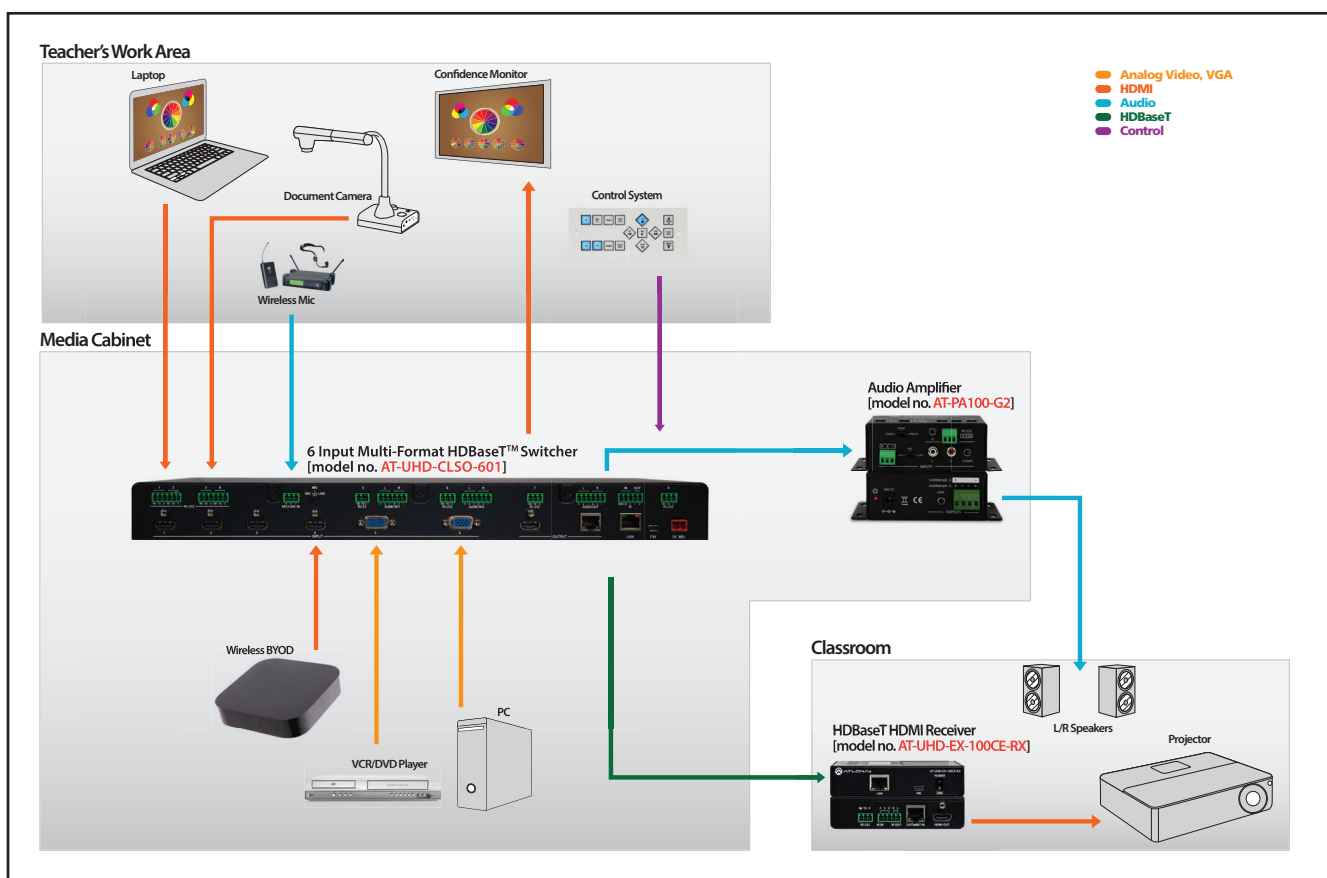
Classrooms challenge integrators like no other space – a rich variety of sources and needs that squeeze budgets. VCRs, VGA PCs, HDMI PCs, Blu-rays, document cameras, iPads and interactive boards all need to be integrated at a price low enough to be replicated tens, hundreds, or even thousands of times.

Solution

Atlona enables powerful, and efficient classroom systems. We design advanced technologies into easy-to-integrate devices while allowing integrators to choose control systems that match the needs of the classroom. Our switching, scaling, HDBaseT™ extension, audio amplification and more support enhanced learning environments where student instruction and learning comes first.



Application Diagram & Specifications



Model	Description	Inputs	Outputs	Benefits
AT-UHD-CLSO-601 New	4K/UHD Multi-Format Switcher with PoE	4 - HDMI 2 - Analog audio/video 1 - Microphone (ducking)	1 - HDBaseT 1 - HDMI (mirrored) 1 - Analog audio (Balanced)	Six-input switcher with mirrored HDBaseT and HDMI outputs. Provides four HDMI, two multi-function analog inputs, mic input with 48V and ducking, plus Ethernet and PoE for 328 feet (100m) HDBaseT receivers. Scales any source up to 4K/UHD resolutions and downscales 4K content to 1080p or lower.
AT-UHD-EX-100CE-RX New	100 Meter HDBaseT Receiver	1 - HDBaseT	1 - HDMI 1 - LAN 1 - RS-232 1 - IR	HDMI extension up to 328 ft. (100 m) @ 1080p and @ 4K/UHD. Delivers 4K/UHD video, audio, 100BaseT Ethernet, power and control through a single cable. Uses PoE to eliminate local AC outlet.
AT-PA100-G2	Audio Amplifier	1 - RCA L/R 1 - 3.5mm L/R 1 - Microphone	1 - Stereo Speaker 1 - 3.5mm loop	Small, energy efficient, stereo/mono amplifier. Provides 2x20 W, stereo/dual mono; 1x 40 W, bridged. Features two, stereo line level inputs and mic input with 48 volt phantom power, ducking and RS-232 control.

Digital Conference Room Solution

Challenge

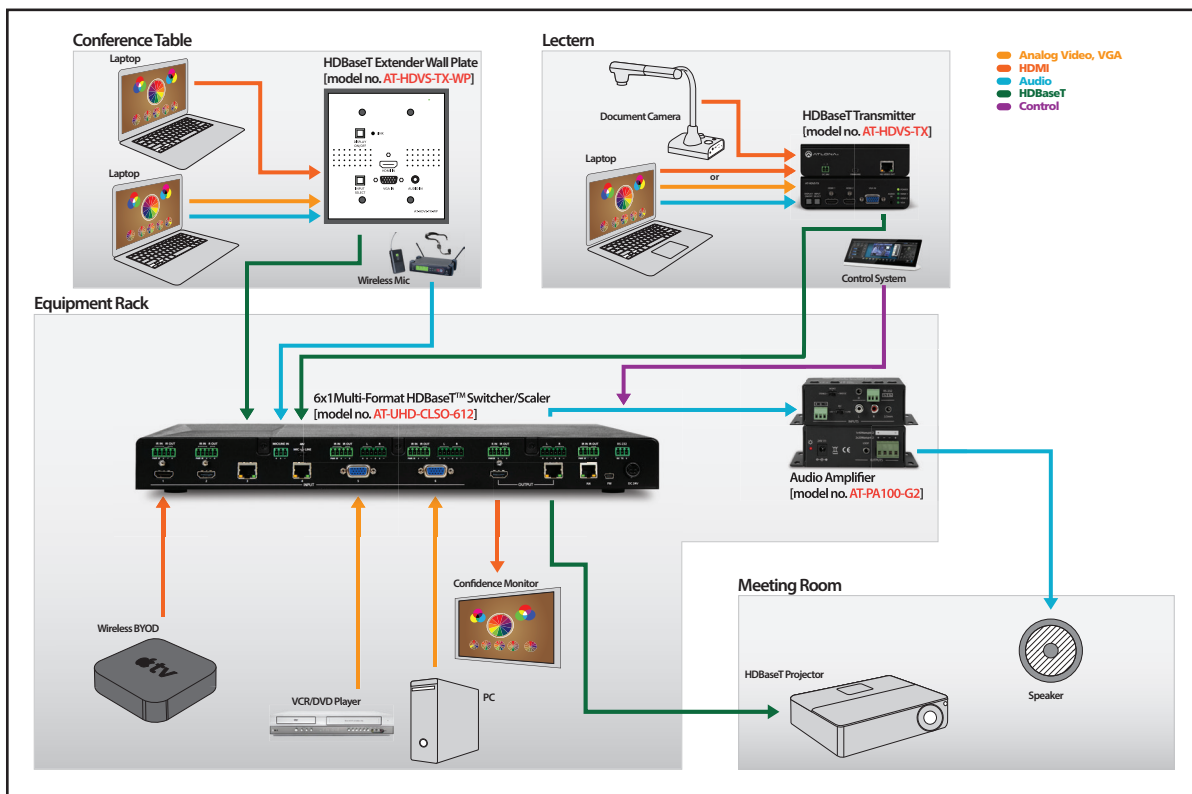
Better communication drives better business! Communications technology needs to operate simply and smoothly so the AV doesn't overshadow the sales presentations, new ideas, and collaboration that define business meetings.

Solution

Atlona offers products that delight the AV system designer, empower the presenter, and excite the audience all at a price that thrills the CFO. Our products place inputs near presenters for easy input selection. Atlona also provides HDBaseT™ solutions that overcome HDMI distance limitations for remote sources and destinations. For easy system management, drivers are available for most control systems so it's simple to optimize the system's operation for effective communications.



Application Diagram & Specifications



Model	Description	Inputs	Outputs	Benefits
AT-UHD-CLSO-612	4K/UHD 6 Input Multi-Format Switcher	2 - HDMI 2 - HDBaseT 2 - Analog audio/video 1 - Microphone (ducking)	1 - HDBaseT 1 - HDMI (mirrored) 1 - Balanced, analog audio	Six-input switcher with mirrored HDBaseT and HDMI outputs. Provides two HDMI, two HDBaseT, two multi-function analog inputs and mic input with 48V and ducking. Scales any source up to 4K/UHD resolutions and downscales 4K content to 1080p or lower. 230 ft. (70M) HDBaseT output with PoCC.
AT-HDVS-TX-WP	Dual Input Wall Plate	1 - HDMI 1 - VGA/3.5mm audio	1 - HDBaseT	Input from PCs with VGA or HDMI output. Powered from CLSO-612 at distances up to 230 feet (70 m). Auto-switch between inputs.
AT-HDVS-TX	3 Input Switcher Extender	2 - HDMI 1 - VGA/3.5mm audio	1 - HDBaseT	Input from PCs with VGA or HDMI output. Powered from CLSO-612 at distances up to 230 feet (70 m). Auto-switch between inputs.
AT-PA100-G2	Audio Amplifier	1 - RCA L/R 1 - 3.5mm L/R 1 - Microphone	1 - Stereo Speaker 1 - 3.5mm loop	Small, energy efficient, stereo/mono amplifier. Provides 2x20 W, stereo/dual mono; 1x 40 W, bridged. Features two, stereo line level inputs and mic input with 48 volt phantom power, ducking and RS-232 control.

Conference Center Audio Solution

Challenge

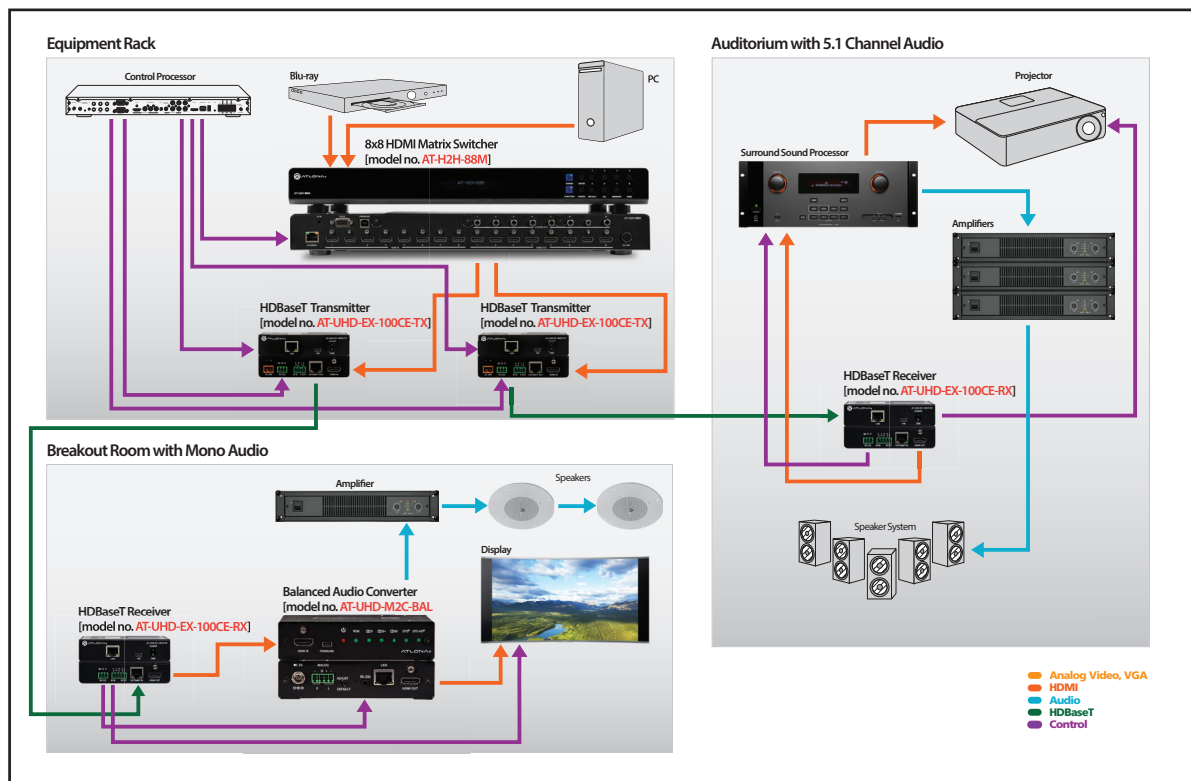
In addition to high quality video to serve presentation needs, conference centers often call for audio to provide simultaneous multi-channel sound for an auditorium and stereo or mono distributed audio for breakout rooms. Professional, balanced line level audio isn't an option – it's a requirement for commercial spaces.

Solution

The Atлона AT-UHD-M2C-BAL offers the only professional solution: Dolby® and DTS® decoding to stereo or mono signals; balanced output; RS-232 or TCP/IP control for level, mute, and EQ; plus HDMI pass-through with 4K/UHD support. With Atлона's UHD-EX series of Extenders and an H2H Series matrix switcher, the simultaneous needs of surround sound and mono distributed audio can be easily met.



Application Diagram & Specifications



Model	Description	Inputs	Outputs	Benefits
AT-H2H-88M	8 x 8 HDMI Matrix Switcher	8 - HDMI 1 - LAN 1 - RS-232 1 - IR	8 - HDMI 8 - S/PDIF	Route any HDMI input to any or all HDMI outputs. Eight S/PDIF outputs for digital audio extraction and routing. Passes all embedded multi-channel codecs including Dolby TrueHD and DTS-HD Master Audio. Compatibility with third-party control systems.
AT-UHD-M2C-BAL New	HDMI Multi-Channel to Two-Channel Balanced Audio Converter	1 - HDMI 1 - LAN 1 - RS-232	1 - HDMI 1 - Balanced L/R	Extracts and downmixes PCM, multi-channel Dolby and DTS surround sound signals from HDMI sources to balanced analog signals. Compatible with 4K/UHD signals. Provides controls for 2-ch. /1-ch. mode, volume, mute, bass, and treble via RS-232, TCP/IP and a web-based GUI.
AT-UHD-EX-100CE New	4K/UHD HDMI Over 100 Meter HDBaseT TX/RX Kit with Ethernet, Control and PoE	1 - HDBaseT 1 - RS-232 1 - IR	1 - HDMI 1 - LAN 1 - RS-232 1 - IR	HDMI extension up to 328 ft. (100 m) @ 1080p and @ 4K/UHD. Delivers 4K/UHD video, audio, 100BaseT Ethernet, power and control through a single cable. Uses PoE to eliminate local AC outlet at receiver.

Digital Huddle Room Solution

Challenge

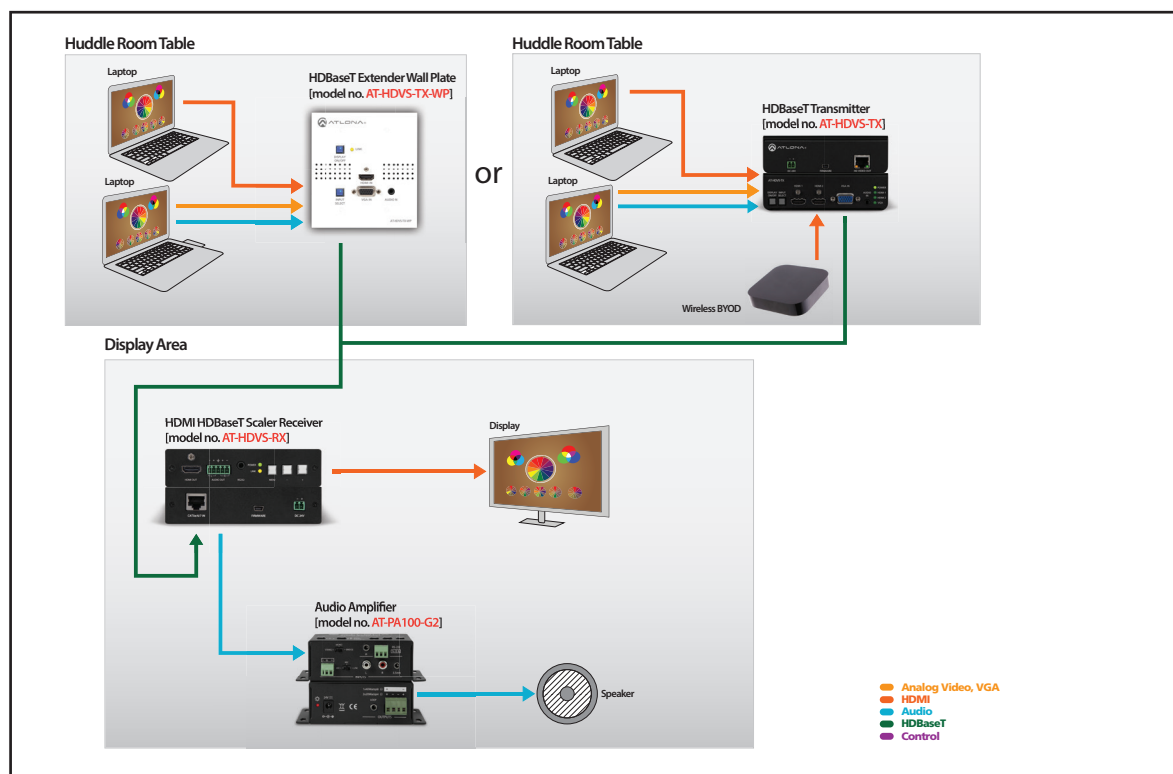
Small meeting areas where 2-3 employees can meet, collaborate, and share ideas are necessary because interaction at a cubicle eliminates confidentiality and interrupts nearby workers. But with small spaces, come small budgets. Low-cost flat panels, simple inputs for a laptop or iPad, and PC-based teleconferencing are the components of these basic systems.

Solution

From transmitter / receiver combos to small switchers, Atлона has multiple solutions that enable cost-effective huddle rooms. Integrated control, audio de-embedding and switching make the design simple and repeatable. Auto control features make it simple for anyone to use these rooms. With switching, scaling, HDBaseT™ extension for inputs and outputs, and audio de-embedding in a small box you can be certain Atлона technology supports collaboration!



Application Diagram & Specifications



Model	Description	Inputs	Outputs	Benefits
AT-HDVS-TX-WP	Dual Input Wall plate	1 - HDMI 1 - VGA/3.5mm audio	1 - HDBaseT	Input from PCs with VGA or HDMI output. Powered from AT-HDVS-RX at distances up to 230 feet (70 m). Switch between inputs with control via RS-232 or auto-switch.
AT-HDVS-TX	3 Input Switcher Extender	2 - HDMI 1 - VGA/3.5mm audio	1 - HDBaseT	Input from PCs with VGA or HDMI output. Powered from AT-HDVS-RX at distances up to 230 feet (70 m). Switch between inputs with control via RS-232 or auto-switch.
AT-HDVS-RX	HDBaseT Scaler/ Receiver	1 - HDBaseT	1 - HDMI 1 - Balanced, Analog Audio 1 - RS-232	Scaler with HDBaseT input. Powers HDVS-TX-WP at distances up to 230 feet (70 m). Transmit control signals from HDVS-TX via RS-232 to display. De-embeds balanced, analog audio.
AT-PA100-G2	Audio Amplifier	1 - RCA L/R 1 - 3.5mm L/R 1 - Microphone	1 - Stereo Speaker 1 - 3.5mm loop	Small, energy efficient, stereo/mono amplifier. Provides 2x20 W, stereo/dual mono; 1x 40 W, bridged. Features two, stereo line level inputs and mic input with 48 volt phantom power, ducking and RS-232 control.

Training Room Solution

Challenge

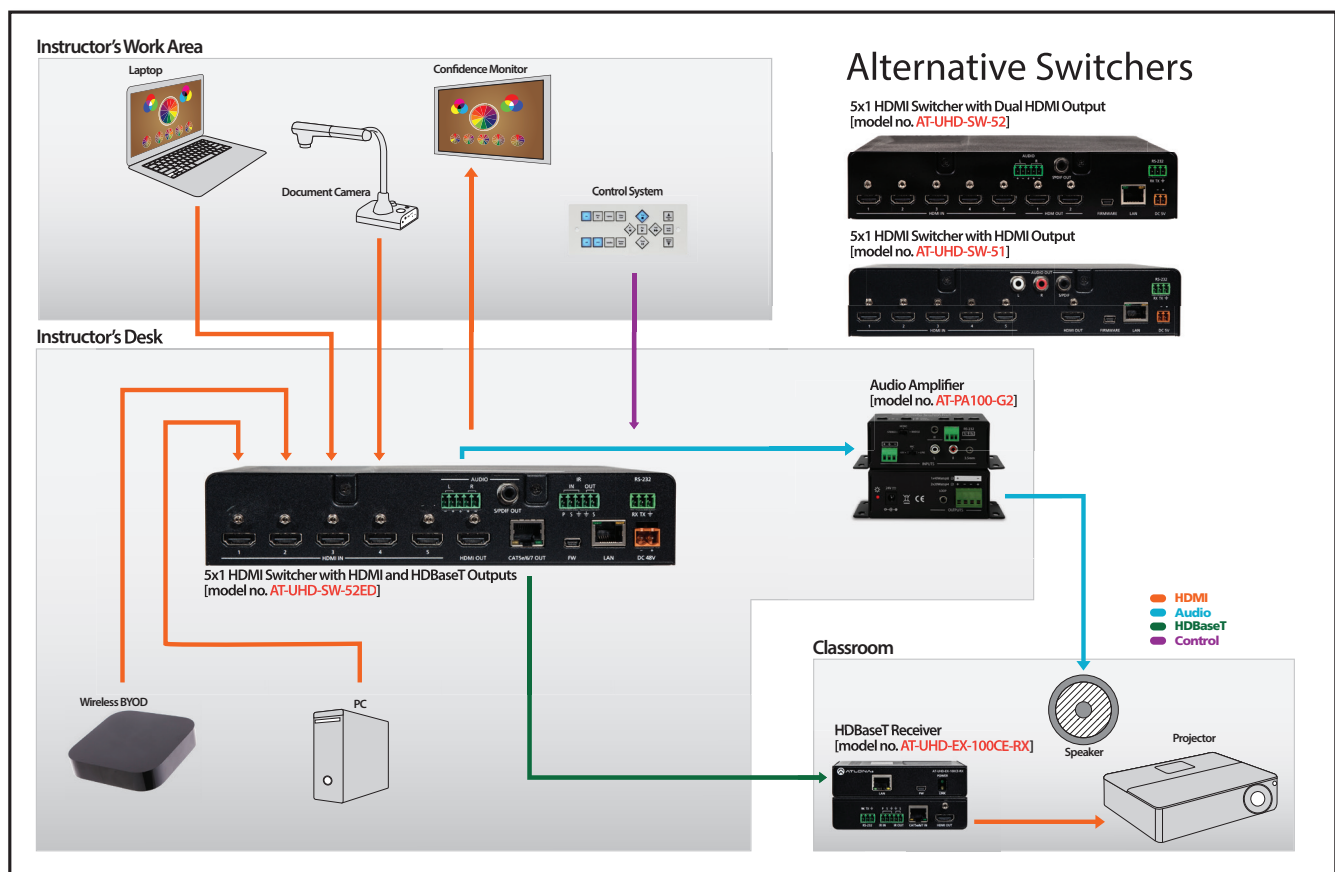
AV for corporate training facilities requires thoughtful integration to ensure signals are properly managed and that systems are easy to operate. Trainers create and deliver their content in a variety of methods from local laptop presentations and files served up from a corporate Internet to tablets and physical product demonstrations.

Solution

The AT-UHD-SW-52ED provides five HDMI inputs with 4K/UHD capability to handle any source resolution. Auto-switching capability means the instructor is never impeded by input selection. HDMI and HDBaseT™ mirrored outputs enable confidence monitoring for the instructor while providing signal runs up to 328 feet (100 meters) for distant projectors. The switcher is compatible with any control system using IR, RS-232, and TCP/IP for ease of remote operation.



Application Diagram & Specifications



Model	Description	Inputs	Outputs	Benefits
AT-UHD-SW-52ED New	4K/UHD 5 Input HDMI Switcher with Mirrored outputs	5 - HDMI 1 - RS-232 1 - IR 1 - LAN	1 - HDBaseT 1 - HDMI 1 - Analog Audio (Bal) 1 - S/PDIF	Five-input HDMI switcher with mirrored HDBaseT and HDMI outputs. Features 4K/UHD capability, auto-switching, PoE for receivers, audio de-embedding, plus ARC to digital audio outputs. Mirrored HDBaseT output offers extension up to 328 ft. (100 m) @ 1080p and @ 4K/UHD.
AT-UHD-EX-100CE-RX New	100 Meter HDBaseT Receiver	1 - HDBaseT	1 - HDMI 1 - LAN 1 - RS-232 1 - IR	HDMI extension up to 328 ft. (100 m) @ 1080p and @ 4K/UHD. Delivers 4K/UHD video, audio, 100BaseT Ethernet, power and control through a single cable. Uses PoE to eliminate local AC outlet.
AT-PA100-G2	Audio Amplifier	1 - RCA L/R 1 - 3.5mm L/R 1 - Microphone	1 - Stereo Speaker 1 - 3.5mm loop	Small, energy efficient, stereo/mono amplifier. Provides 2x20 W, stereo/dual mono; 1x 40 W, bridged. Features two, stereo line level inputs and mic input with 48 volt phantom power, ducking and RS-232 control.