



ATLONA®

Connecting technology to your world

2012 CATALOG





We are proud to offer a complete line of audio/video connectivity products that are user-friendly, reliable and built to last. We believe we make the best connectivity devices in the business, designed to help you sell more and keep your customers and their technologies connected.

home collection

Atlona Home products give you freedom and flexibility in how you enjoy your media. The content in your home takes many forms and comes from a variety of sources. Our products provide the tools you need to share media across multiple rooms, devices and formats.

PROFESSIONAL

Atlona Professional products allow integrators to create scalable customizable solutions for their customers in residential and commercial audio/video applications. This line of products provides a full range of solutions that cover almost every conceivable issue one may face in any digital AV system.

COMMERCIAL

Atlona Commercial products are designed to satisfy the unique requirements of government, education, broadcast, healthcare, and other high profile commercial AV applications. These state-of-the-art products bridge the gap between AV and computer technologies.

Contents

Switchers

HDMI Switchers.....	3
HDBaseT Switchers.....	6
HDMI Switchers with Single or Mirror Outputs.....	7
HDMI KVM Switchers.....	9
Multi-Input Presentation Switchers.....	10
Composite Matrix Switchers.....	11

Amplifiers

HDMI Distribution Amplifiers over CAT5/6/7.....	15
3G/HD/SD-SDI Distribution Amplifiers.....	18
VGA Amplifiers.....	19
Professional Stereo audio Amplifiers.....	21

Extenders

HDMI Extenders Over Cat5/6/7.....	25
HDMI Extenders Over HDBaseT.....	24
HDMI Extenders Over 5 Wire.....	26
HDMI Extenders Over Fiber Optics.....	27
SDI Extenders Over Fiber Optics.....	31
Composite AV Extenders Over Cat5/6/7.....	32
IR/RS-232 Extenders.....	32
VGA Extenders Over Cat5/6/7.....	35
VGA/Component Extenders Over Fiber.....	39
IR/RS-232 Extenders.....	32
Component video Extenders Over Cat5/6/7.....	40
DVI Extenders.....	42

Converters & Scalers

Converters & Scalers.....	46
---------------------------	----

Cables & Adapters

Plenum HDMI, VGA & DVI Cables.....	58
Cables / Adapters.....	63

Testing Kits

Installer Testing Kit.....	65
----------------------------	----



Video switchers are the heart of every multi-source AV system. Our switching solutions simplify complex AV systems, integrating new technology to deliver an array of media, control, and data signals for a wide variety of applications, ranging from home use to multi-format commercial AV systems.

Switchers



4X1 HDMI SWITCHER AT-HD4-V41

Connect four sources to a video display with the 4x1 HDMI switcher. This switcher features a built-in pass-through for an HDMI ethernet channel and an audio return channel, enabling you to pass Internet from your router and stream audio to an A/V receiver via a single HDMI cable.

Input: 4 x HDMI; 1 X RS-232

Output: 1 x HDMI; 1 x Ethernet; 1 x S/PDIF; 1 x RS-232; 1 x IR 3.5mm

Features:

- Full 3D pass-through
- Supports resolutions up to 1080p and 1920x1200
- Auto Sensing Function
- Includes IR receiver, remote control, 5V power supply, user manual



4X2 HDMI SWITCHER AT-HD4-V42

Connect four sources to two mirrored video displays with the 4x2 HDMI switcher. This switcher features two built-in pass-through for an HDMI ethernet channel and an audio return channel, enabling you to pass Internet from your router and stream audio to an AV receiver via a single HDMI cable.

Input: 4 x HDMI; 1 X RS-232

Output: 2 x mirrored HDMI; 2 x Ethernet; 2 x S/PDIF; 1 x RS-232; 1 x IR 3.5mm

Features:

- Full 3D pass-through
- Supports resolutions up to 1080p and 1920x1200
- Auto Sensing Function
- Includes IR receiver, remote control, 5V power supply, user manual





16x16 HDMI Matrix Switcher over CAT5e/6/7



8X8 HDBASE-T MATRIX SWITCHER AT-PRO2HD88M

The versatile 8x8 HDBaseT Matrix Switcher allows you to extend your AV experience up to 330 feet. IR, RS-232, and up to 1080p video with audio extend via a single CAT5/6/7 cable.

Input: 8 x HDMI; 9 x IR 3.5mm; 1 x USB type B;

1 x RS-232; 8 x 3.5mm stereo audio

Output: 8 x CAT5/6/7; 1 x RS-232; 9 x IR 3.5mm

Features:

- Supports video up to 1080p and 1920x1200, 3D, Dolby TrueHD and DTS-HD Master audio signals (pass-through only)
- 8 programmable memory presets
- Back-up power supply
- Includes IR Extender, 9 IR emitters, 2 x 24V DC adaptors, 2 power cords, remote control, user manual



16X16 HDBASE-T MATRIX SWITCHER AT-PRO2HD1616M

Extend audio and video content between sources and displays up to 330 feet (100 Meters) via single CAT5/6/7, when used in tandem with PRO2HD matrix switchers. Allows 2-way IR and 2-way RS232 pass-through.

Input: 16 x HDMI; 17 x IR 3.5mm;

1 x USB type B; 16 x 3.5mm stereo audio

Output: 16 x CAT5/6/7; 1 x RS-232; 17 x IR 3.5mm

Features:

- Supports video up to 1080p and 1920x1200, 3D, Dolby TrueHD and DTS-HD Master audio signals (pass-through only)
- 8 programmable memory presets
- Advanced EDID management
- Back-up power supply
- Includes IR Extender module, IR emitter, 2 x 24V DC adaptors, 2 power cords, remote control, user manual



HDMI MATRIX RECEIVER OVER CAT5/6/7 AT-PRO2HDREC

Extend audio and video content between sources and displays up to 330 feet (100 Meters) via single CAT5/6/7, when used in tandem with PRO2HD matrix switchers. Allows 2-way IR and 2-way RS232 pass-through.

Input: 1 x CAT5/6/7; 1 x IR 3.5mm

Output: 1 x HDMI; 1 x 3.5mm stereo audio; 1 x RS-232

Features:

- Supports video resolutions up to 1080p and 1920x1200
- Bidirectional control, and compatibility with 3rd party controllers enables you to control the matrix and in-zone displays.
- Supports 3D pass through
- Includes 5V DC adaptor, IR 3.5mm receiver, IR 3.5mm emitter, user manual



HDMI EXTENDER OVER SINGLE CAT5/6/7 WITH AUDIO DE-EMBEDDING AT-PRO2HDREC-DA

Extend IR, RS-232, audio and video content between sources and displays when used in tandem with a PRO2HD matrix switchers. With pass through support of up to 1080p or 1920x1200, 3D, 2Channel and Multi-channel audio, bidirectional RS-232 and IR signals. The AT-PRO2HDREC-DA extender allow almost any audio/visual system set up to be used.

Input: 1 x CAT5/6/7; 1 x IR 3.5mm

Output: 1 x HDMI; 1 x IR 3.5mm; 1 x RS-232; 1 x 3.5mm stereo audio; 1 x S/PDIF

Features:

- Supports video resolutions up to 1080p and 1920x1200
- De-embed 2-Channel and Multichannel audio and pass to an amp through 3.5mm S/PDIF or Stereo audio ports.
- Supports 3D pass through
- Includes 5V DC adaptor, power cord, IR 3.5mm receiver, IR 3.5mm emitter, user manual

Switchers

4X4 HDBASE-T MATRIX SWITCHER AT-PRO3HD44M

Extend your AV experience with effortless control of up to 4 HDMI and DVI devices with the 4x4 HDBaseT Matrix Switcher. The HDBaseT technology enables you to send 2-way IR and 2-way RS232 and video up to 1080p with audio via a single CAT5/6/7 cable up to 230ft.

Input: 4 x HDMI; 5 X IR 3.5mm

Output: 4 x CAT5/6/7; 4 X S/PDIF; 1 x RS-232; 5 x IR 3.5mm

Features:

- Supports PoE
- Audio De-Embedding at the switcher through S/PDIF outputs
- Supports 3D
- Advanced EDID management
- Includes 24V DC adaptor, power cord, IR extender; 5 IR emitters, remote control, user manual



HDBASE-T MATRIX SWITCHER RECEIVER AT-PRO3HDREC

With the latest, most affordable HDBaseT technology, extend 2-way IR and 2-way RS232, audio and up to 1080p video between sources and displays as far as 230ft with the PRO3HD44M matrix switcher.

Input: 1 x CAT5/6/7; 1 x IR 3.5mm

Output: 1 x HDMI; 1 x IR 3.5mm; 1 x RS-232

Features:

- Supports Power Over Ethernet
- Bidirectional control, compatibility with 3rd party controllers and IR remote enables you to control the matrix and in-zone displays.
- Supports Dolby TrueHD and DTS-HD (pass-through only)
- Includes IR 3.5mm receiver, IR 3.5mm emitter, RS-232 3.5mm to 9 pin adaptor, user manual



2X1 VGA SWITCHER WITH AUDIO AT-APC21A

This high performance plug-and-play unit senses the presence of an active VGA signal and automatically switches to the active source. Connect two VGA sources to a single monitor and pair of speakers. A dual-color LED indicates active channel status.

Input: 2 x VGA; 1 x 3.5mm stereo audio

Output: 2 x VGA; 1 x 3.5mm stereo audio

Features:

- Supports VGA, XGA, SVGA, SXGA, UXGA, WUXGA, multi-sync and TFT-LCD monitors
- 350 MHz bandwidth with resolution up to 2048x1536
- External control button for optional manual selection
- Includes wired manual selector, user manual



4X1 VGA SWITCHER WITH AUDIO AT-PC41A

This high performance VGA Switcher enables you to easily select desired VGA source with a remote and route it to a particular display. It installs in seconds.

Input: 4 x VGA (Component with adaptor); 4 x 3.5mm stereo audio

Output: 1 x VGA (Component with adaptor); 1 x 3.5mm stereo audio

Features:

- Supports up to 1080p and 1920x1200 without signal degradation
- Built-in advance circuit ensures a smooth transition when switching from one PC/HD source to another
- External control button for optional manual selection
- Includes IR remote, 5V power supply, serial cable, 3ft mini audio cable, user manual



Switchers



MULTI-INPUT PRESENTATION SWITCHER

AT-DRC444

The ultimate in streamlined inputs, this multi-input presentation switcher allows users to easily connect DVI, HDMI, VGA, Composite video and audio inputs. A microphone input allows the user to provide voice-over commentary, making this perfect for classroom, conference or worship settings.



Front

Back

Input: 2 x DVI; 2 x HDMI; 4 x VGA; 4 x Composite (BNC); 4 x 3.5mm stereo audio; 1 x 1/4 inch stereo audio; 8 x stereo audio (captive screw termination); 1 x RS-232

Output: 1 x DVI; 1 x VGA; 1 x Composite (BNC); 1 x 3.5mm stereo audio; 2 x stereo audio (captive screw termination); 2 x stereo audio (captive screw termination); 1 x RS-232 (captive screw termination); 1 x RS-485 (captive screw termination); Program out (captive screw termination)

Features:

- DVI and HDMI inputs support video resolutions up to 1920x1200 and 1080p
- VGA inputs support video resolutions up to 3200x2400 at 60Hz
- Programmable output, allows users to send RS-232 commands to display
- Includes power cable, IR remote, RS-232 cable, user manual



Front

Back

8X8 COMPONENT VIDEO WITH ANALOG AND DIGITAL AUDIO MATRIX SWITCHER

AT-COMP-88M

Input: 8 x Component video; 8 x RCA stereo audio; 8 x digital coaxial; 1 x RS-232

Output: 8 x Component video; 8 x RCA stereo audio; 8 x digital coaxial

Features:

- High Video Bandwidth (325MHz)
- RS-232 controllable, compatible with all third party control systems
- Supports high definition resolutions: 480p, 576i/p, 720p, 1080i/1080p
- Includes IR Remote, 12V DC power supply, rack mounts, RS-232 cable, software control package, user manual



Front

Back

4X4 COMPONENT MATRIX SWITCHER

AT-COMP-44M

Input: 4 x Component video; 4 x RCA stereo audio; 4 x digital coaxial; 1 x RS-232

Output: 4 x Component video; 4 x RCA stereo audio; 4 x digital coaxial

Features:

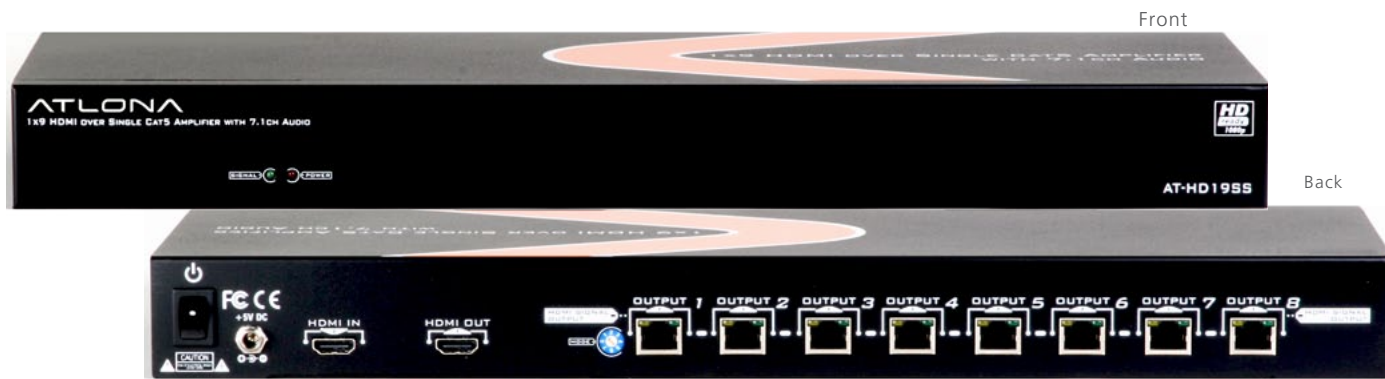
- High Video Bandwidth (325MHz) is beneficial for users planning to use long Component video output Cables
- Switcher is featured with RS-232 interface for control with included PC software or with a 3rd party control system
- Supports high definition resolutions: 480p, 576i/p, 720p, 1080i/1080p
- Includes IR remote, rack mounts, RS-232 cable, software control package, 12V DC power supply, user manual



Video distribution and amplification enables you get more out of your AV sources. Our amplifiers allow you to easily share a single source across multiple displays.

Distribution Amplifiers

Use these HDCP compliant distribution amplifiers to transmit a single HDMI source to multiple displays using just one CAT5/6/7 cable. A built-in HDMI repeater is designed to prevent signal loss due to use of long input cables. These products require a receiver unit for each display. Receivers sold separately.



9 OUTPUT HDMI DISTRIBUTION AMPLIFIER AT-HD19SS

Input: 1 x HDMI

Output: 8 x CAT5/6/7; 1 x HDMI (loop-out)

Features:

- 3D Capable
- Supports analog and digital audio
- 1080p@130ft (40m) and 1080i@200ft (60m)
- Dolby TrueHD and DTS-HD Master Audio (pass-through only)
- Compatible with AT-HDRS, AT-HD50RSL, and AT-HDRP

4 OUTPUT HDMI DISTRIBUTION AMPLIFIER AT-HD-V14SS

Input: 1 x HDMI

Output: 4 x CAT5/6/7; 1 x HDMI (loop out)

Features:

- HDCP compliant
- 1080p@130ft (40m) and 1080i@200ft (60m)
- Supports default HDMI EDID and can record the EDID of one display
- Compatible with AT-HDRP
- Includes 5V DC power supply, rack mounts, user manual



HDMI RECEIVER OVER CAT5/6/7 AT-HD50RSL

Input: 1 x CAT5/6/7

Output: 1 x HDMI; 1 x 3.5mm stereo audio; CAT5/6/7

Transmission: CAT5/6/7

Features:

- Compatible with AT-HD-V14SS and AT-HD-MI19SS splitters, AT-HD50SS transmitter, and AT-HDRP repeater
- Cascadable
- 3D capable
- Supports resolutions up to 1080i (200ft) or 1080p (130ft)
- Supports up to 7.1 digital HDMI audio
- Adjustable 8-level equalization control
- Includes 5V DC power supply, user manual



HDMI REPEATER AT-HDRP

Boost your transmissions with this 3D capable repeater, which can extend CAT5/6/7 transmission up to an additional 130ft (over 1080p) or 200ft (over 1080i). A wall-mount design and small form factor makes this device easy to install and conceal.

Input: 1 x CAT5/6/7

Output: 1 x CAT5/6/7

Features:

- HDMI, HDCP, and DVI 1.1 compliant
- Supports resolutions of 480i, 480p, 720p, 1080i, 1080p up to 36-bit color
- Signal EQ with 8-level digital control
- Includes 5V DC locking power supply, mounting screw, user manual



HDMI AMPLIFIER OVER CAT5/6/7 AT-HD50SS

This 3D-capable, cascadable device boosts high definition video and digital or analog audio signals over long distances. Using a CAT5/6/7 cable, the AT-HD50SS can extend 1080i transmissions up to 200ft and 1080p transmissions up to 130ft. Must be used with a receiver unit (sold separately).

Input: 1 x CAT5/6/7

Output: 1 x CAT5/6/7

Features:

- Compatible with AT-HDRS, AT-HD-15SRS, and AT-HD50RSL receivers; and HDRP repeater
- HDMI and HDCP compliant
- Prevents signal loss by regenerating HDMI signal
- Adjustable 8-level EQ control
- Supports 7.1 CH digital HDMI audio
- Includes 5V power supply, user manual



1X2 OUTPUT HDMI DISTRIBUTION AMPLIFIER AT-HD-V12

- Input:** 1 x HDMI
Output: 2 x HDMI
Features:
- 3D Capable
 - HDCP compliant
 - Deep color video
 - Includes 12V DC power supply, user manual



1X8 OUTPUT HDMI DISTRIBUTION AMPLIFIER AT-HD-V18

- Input:** 1 x HDMI
Output: 8 x HDMI
Features:
- 3D Capable
 - HDCP compliant
 - Deep color video
 - Includes 5V DC power supply, rack mounts, user manual

These unique distribution amplifiers allow users to connect any digital video sources to multiple digital displays. The devices can split a single HDMI signal simultaneously between displays without compromising signal quality. HDMI distribution amplifiers support resolutions up to 1080p and 1920x1200.



1X4 OUTPUT HDMI DISTRIBUTION AMPLIFIER AT-HD-V14

- Input:** 1 x HDMI
Output: 4 x HDMI
Features:
- EDID learner automatically detects HDMI monitors
 - Supports resolutions up to 1080p
 - Deep color video
 - Includes 5V DC power supply, user manual



1X16 OUTPUT HDMI DISTRIBUTION AMPLIFIER AT-HD-V116

- Input:** 1x HDMI
Output: 16 x HDMI
Features:
- 50/60Hz compatible for worldwide users
 - Ability to chain up to 5-layers
 - Supports data rates up to 6.75Gbps
 - Includes 12V DC power supply, user manual

Distribution Amplifiers

These distribution amplifiers split an SDI input for transmission to multiple separately-buffed and re-clocked outputs. These units are compatible with full resolution 3G, 3G-SDI, HD-SDI, and SDI, and are ideal for splitting signals from a camera, video card, or mixer without delay.

1x4 3G HD-SDI Distribution Amplifier AT-3GSDI-14

Input: 1 x SDI

Output: 4 x SDI

Features:

- EQ output up to 1000ft (SD-SDI) up to 500ft (HD-SDI) or up to 300ft (3G HD-SDI)
- Locking power supply
- Full audio support
- Includes 5V DC power supply, user manual



1X6 3G HD-SDI DISTRIBUTION AMPLIFIER AT-3GSDI-16

Input: 1 x SDI

Output: 6 x SDI

Features:

- EQ output up to 1000ft (SD-SDI) up to 500ft (HD-SDI) or up to 300ft (3G HD-SDI)
- Supports resolutions up to 1080p
- Supports bandwidth up to 3Gbps
- Includes 5V DC power supply, user manual



Atlona's plug-and-play distribution amplifiers split and transmit flawless video and audio signal to multiple displays.

1X2 VGA DISTRIBUTION AMPLIFIER AT-VGA12A

Input: 1 x VGA; 1 x 3.5mm stereo audio

Output: 2 x VGA; 1 x 3.5mm stereo audio

Features:

- Self powered (via VGA Cable), power supply is only required for 2k resolutions
- Optional USB power
- Plug & Play - no drivers or software required
- Includes 5V DC power supply, rack mounts, user manual



VGA GROUND LOOP ISOLATOR AT-VGA11S

Designed to complement Atlona's lines of distribution amplifiers, matrix switchers, and long distance cables, the VGA Ground Loop Isolator reduces video noise in VGA signal. Eliminate annoying image distortion and disruption for perfect high resolution video transmission.

Input: 1 x VGA

Output: 1 x VGA

Features:

- Supports resolutions up to 2K or 2048x1536
- Compatible with RGB formats – RGB, RGB+HV, RGBS
- Wall mountable
- Locking power adapter
- Includes 5V DC power supply, user manual

1X4 VGA DISTRIBUTION AMPLIFIER AT-VGA14A

Input: 1 x VGA; 1 x 3.5mm stereo audio

Output: 4 x VGA; 1 x 3.5mm stereo audio

Features:

- Connects up to 4 VGA displays with stereo audio
- Self powered (via VGA Cable), power supply is only required for 2k resolutions
- Supports VGA 2k resolutions up to 2048 x 1536 @ 60/70/85Hz
- Includes 5V DC power supply, rack mounts, user manual



1X8 VGA DISTRIBUTION AMPLIFIER AT-VGA18A

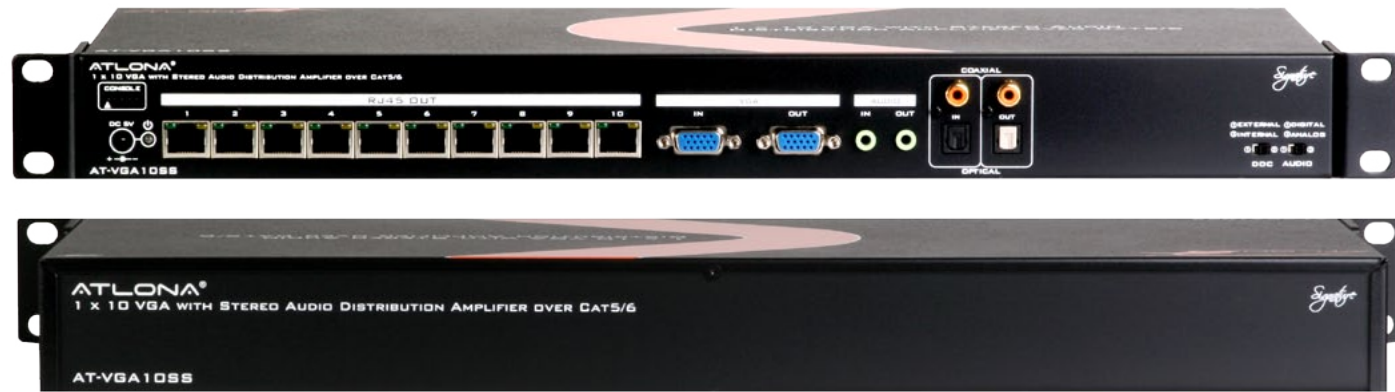
Input: 1 x VGA; 1 x 3.5mm stereo audio

Output: 8 x VGA; 1 x 3.5mm stereo audio

Features:

- Connects up to 8 VGA displays with stereo audio
- Supports VGA 2k resolutions up to 2048 x 1536 @ 60/70/85Hz
- Stereo audio via 3.5mm audio
- Easy installation
- Includes 5V DC power supply, rack mounts, user manual





10 OUTPUT VGA DISTRIBUTION AMPLIFIER WITH AUDIO AT-VGA10SS

The AT-VGA10SS can transmit high resolution VGA video and stereo audio signals to up to 10 locations 1100ft away. The rack mountable unit works with Atlona's AT-VGA300RL receiving module (sold separately) to connect to displays or to loop out to additional amplifiers.

Input: 1 x VGA; 1 x 3.5mm stereo audio

Output: 10 x CAT5/6/7; 1 x VGA; 1 x 3.5mm stereo audio

Features:

- Supports transmission of resolutions including 1920x1200 (400ft), 1600x1200 (950ft), 1280x1024 (1050ft), and 1024x768 (1100ft) via CAT5/6/7 connection
- Rack mountable
- DDC adjustments (internal or external)
- Local VGA/Audio output for a local display or loop-out
- Includes 5V DC power supply, rack mounts, user manual

3 INPUT STEREO/MONO AUDIO AMPLIFIER AT-PA100

Atlona's stereo/mono audio amplifier has a built-in EQ control that allows users to adjust bass and treble settings and to mix a microphone signal with line audio output. The PA100 is based on the digital amplification circuit (Class-D) and allows it to work in either Stereo mode 2x20W or in Bridge mode (Mono) at 1x40W. Great solution for school, houses of worship, conferences, or dining/entertainment settings that use a third party control system. This device will also operate with Atlona's model AT-PA1-IR IR remote, sold separately.

Input: 1 x RCA stereo audio; 1 x 3.5mm stereo audio, 1 x microphone (1/4 inch)

Output: 1 amplifier; 1 3.5mm stereo audio

Features:

- Dual or bridge mono modes
- RS-232 control
- Internal international power supply (100Volt~240Volt AC, 50/60Hz)
- Anti-static case design
- Includes 1 AC adapter, user manual



PROFESSIONAL STEREO AUDIO AT-PA1-IR

The AT-PA1-IR is the companion IR remote used to operate the Stereo/Mono Audio Amplifier AT-PA100 (above).

Features:

- Functions include channel select, mute, microphone control, and volume control
- Includes 5ft IR cable, IR remote





Video Extenders help you extend the boundaries of analog and digital video formats. Our line of extenders help simplify your world, allowing you to extend both single and multiple signals over a single cable, delivering media, control, and data far beyond the limits of traditional cabling.

Extenders



HDMI EXTENDER KIT OVER HDBASE-T AT-HD4-V110SR

This HDMI over single CAT5/6/7 extender kit includes a transmitter and a receiver designed to support bidirectional RS-232, bidirectional IR, bidirectional Ethernet pass-through, DTS HD Master Audio and Dolby True HD pass-through.

Input: 1 x HDMI; 1 x CAT5/6/7; IR 3.5mm; 1 x RS-232

Output: 1 x HDMI; 1 x CAT5/6/7; 1 x IR 3.5mm; 1 x RS-232

Transmission: HDBaseT (CAT5/6/7)

Features:

- HDBaseT technology allows full 3D support
- Supports uncompressed 7.1 ch digital audio
- Supports all VESA formats
- Capable of resolutions up to 1080p at 328ft
- Includes 2 5V DC power supplies, rack mounts, 2 IR emitters, 2 IR receivers, user manual



HDMI EQUALIZER AT-HDMI-EQ2

Extend both input and output up to 50ft (15m) each, with built in equalization to ensure all compatible signals are passed between devices.

Input: 1 x HDMI

Output: 1 x HDMI

Features:

- Supports resolutions up to 1080p
- HDMI Ethernet Channel (HEC) pass through
- Extends both input and output up to 50ft
- Supports ARC, ethernet, 3D, Dolby TrueHD, and DTS-HD Master Audio on passthrough



HDMI EXTENDER SET AT-HD4-SI40SR

This HDMI over CAT5/6/7 extender set features a transmitter and receiver designed to support high resolutions at distances up to 200ft. An adjustable 8-level EQ control helps to maximize signal performance when long-distance transmission is required.

Input: 1 x HDMI

Output: 1 x HDMI

Transmission: CAT5/6/7

Features:

- 7 selectable on board EDID modes plus learning feature to ensure optimal display requirements are met
- Cascadable
- Supports resolutions up to 1080p at 130ft
- Includes 2 5V power supplies, user manual



HDMI WALL PLATE KIT AT-HD-SR

The sending and receiving units of the Single Gang Wall Plate HDMI Extenders are completely passive, requiring no additional power source to transmit flawless HDMI signal. This “behind the curtain” technology is the perfect solution for speedy and discrete HDMI transmission.

Input: 1 x HDMI

Output: 1 x HDMI

Transmission: CAT5/6/7

Features:

- Supports resolutions up to 1080p
- HDCP, EDID, and HDMI compliant
- Wall plates are passive, with power being supplied by the HDMI enabled equipment
- 3D capable



HDMI EXTENDER SET OVER CAT5/6/7 WITH IR AT-HD4-V40SR

The HDMI Extender set supports high resolution and high bandwidth up to 200ft. The transmitter and receiver work cooperatively to send pristine HDMI signal, further optimized with 8-step EQ control and embedded EDID functions.

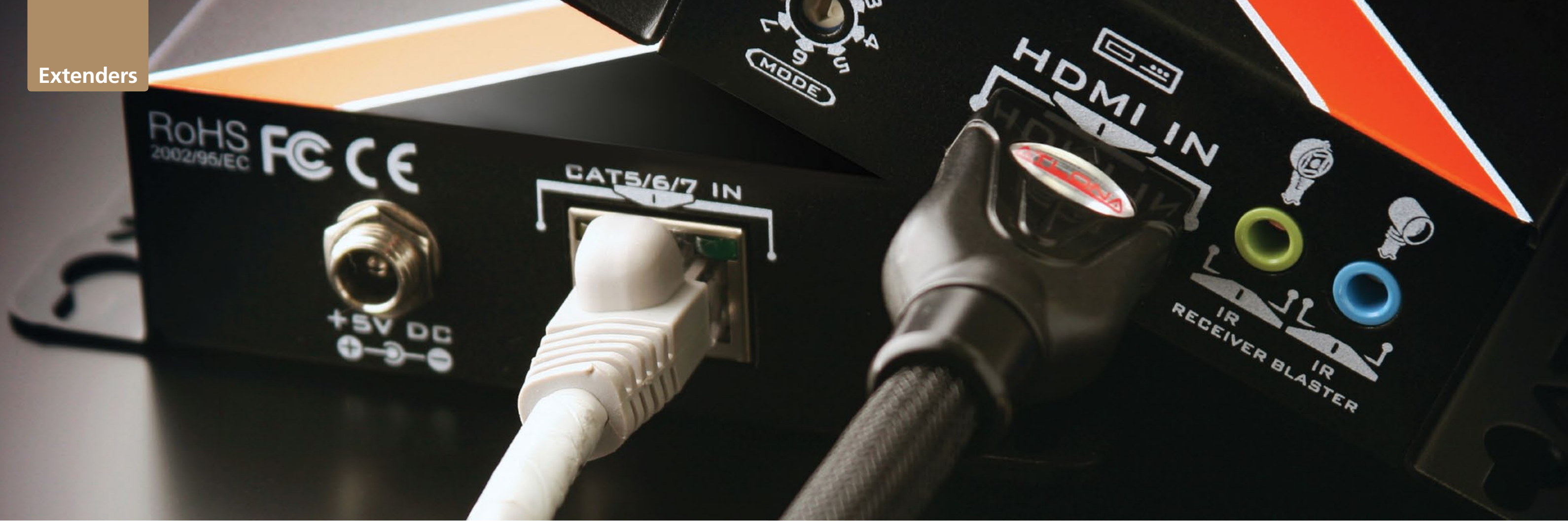
Input: 1 x HDMI; 2 x IR 3.5mm

Output: 1 x HDMI, 2 x IR 3.5mm

Transmission: CAT5/6/7

Features:

- Supports HDCP, Deep Color, DTS-HD, Dolby TrueHD (pass-through only)
- Cascadable
- Supports resolutions up to 1080p at 130ft
- Includes 2 5V power supplies, 1 IR blaster, 1 IR receiver, user manual



HDMI OVER 5-WIRE EXTENDER SET AT-HD-RG100SR

Extend high resolution HDMI transmission up to 330ft with this 5-wire, bidirectional extender set. The AT-HD-RG100SR will easily integrate with existing cables and infrastructures, allowing users to instantly extend HDMI signals from remote devices.

Input: 1 x HDMI, 1 x IR 3.5mm

Output: 1 x HDMI, 1 x IR 3.5mm

Transmission: BNC/RCA

Features:

- EDID and bidirectional IR pass-through capability
- Supports Deep Color and resolutions up to 1080p (330ft)
- HDCP 2.0 and DVI 1.0 compliant (with DVI/HDMI adapter)
- Supports VESA
- Includes 1 IR blaster, 1 IR receiver, 2 5V power supplies, 10 BNC/RCA adapters, user manual



MINI HDMI RECEIVER OVER FIBER OPTIC AT-HDF20SR

This fiber optic input HDMI receiver is designed to support high resolution at long distances in cooperation with Atlona transmitter models AT-HDF20S, AT-HDFW10S, AT-DVIF20S, and AT-DVIFW10S. Using just a single fiber optic cable, the AT-HDF20SR can support video, audio, EDID, and HDCP.

Input: 1 x HDMI

Output: 1 x HDMI

Transmission: Fiber optic

Features:

- Supports resolutions up to 1080p
- Fully supports 3D, EDID/DDC, and HDCP
- UL Class A certified
- Includes 1 5V power supply, user manual



* Sender/Receiver sold separately



HDMI WALL PLATE EXTENDER SET OVER FIBER OPTIC AT-HDFW10S/R

This sender and receiver wallplate set is designed to extend high resolution HDMI signal in cooperation with Atlona transmitter models AT-HDF20S, AT-DVIF20S, and AT-DVIFW10S. All video, audio, EDID, and HDCP transmissions are converged and transmitted via a single fiber optics cable.

Input: 1 x HDMI

Output: 1 x HDMI

Transmission: Fiber optic

Features:

- Supports resolutions up to 1080p
- Fully supports 3D, EDID/DDC, and HDCP
- In-Wall 12V external power supply optional
- UL Class A certified



* Sender/Receiver sold separately

HDMI EXTENDER SET OVER FIBER OPTIC AT-HDF30S/R

This sender and receiver set is designed to extend high resolution HDMI, RS-232, IR, and audio signals in cooperation with Atlona's transmitter modules AT-HDF20S-IR, AT-DVIF30S-IR, and AT-RGBF30S-IR. All video, audio, EDID, HDCP, RS-232, IR and AUX audio transmissions are converged and sent via a single fiber optic cable.

Input: 1 x HDMI

Output: 1 x HDMI

Transmission: Fiber optic

Features:

- Supports resolutions up to 1080p
- Fully supports 3D, EDID, and HDCP
- IR pass-through
- UL Class A certified
- Built-in equalizer
- Also available with IR. Model: AT-HDF 30 S/R-IR
- Includes harness style adapter for RS-232 and audio, 5V power supply, user manual



* Sender/Receiver sold separately



MINI FIBER OPTIC 3G/HD/SD-SDI EXTENSION KIT AT-3GSDI20SR

This miniature fiber optic extension kit combines small size with big performance. A tiny 3G/HDSDI balun can transfer 1080p HD-SDI signal at 3Gbps up to 1200ft over a single or multi-mode fiber. A latch-locking power connector prevents signal degradation and disruption.

Input: 1 x SDI

Output: 1 x SDI

Transmission: Fiber optic

Features:

- Supports SDI, DVB-ASI, HD-SDI, 3G-SDI
- Supports multi-rate 3G/HD/SD-SDI signal
- Video Pathological Test Code compliant
- Multi mode and single mode fiber connector
- Includes 2 optional-use power supplies, user manual



HD/SD-SDI EXTENDER SET OVER FIBER OPTIC AT-SDI10SR-LC

This SDI over fiber optic extender set allows users to transmit multi-rate SDI video, embedded audio, and metadata over a multi-mode optic fiber cable at a distance of up to 10km.

Input: 1 x SDI

Output: 1 x SDI

Transmission: Fiber optic

Features:

- Supports SMPTE 259M (270Mbps); SMPTE 259M (360Mbps); SMPTE 292M / HDTV (1.485Gbps and 1.485/1.001Gbps); DVB ASI (270Mbps)
- Automatic re-clocking and equalizing
- HD/SDI input signal detection LED
- Includes 2 5V DC power supplies, user manual



IR EXTENDER SYSTEM OVER CAT5/6/7 AT-IR300SRS

The AT-IR300SRS lets users transmit IR signals up to 1000ft. The AT-IR300S transmitter and AT-IR300R repeater modules connect to each other with a single CAT5/6/7 cable and can be controlled with an IR remote (sold separately).

Input: 1 x IR 3.5mm

Output: 3 x IR 3.5mm

Transmission: CAT5/6/7

Features:

- IR receiver frequency range: 20KHz to 38KHz
- Control equipment from up to 1000 ft. away, even through walls and ceilings
- Repeater has 1 IR remote input
- Includes 1 IR receiver, 5 IR eye emitters, 5V DC power supply, user manual



Front



Back

RS-232 EXTENDER OVER CAT5/6/7 AT-RS-232SRS

This wall-mountable extender utilizes twisted pair CAT5/6/7 cables to transmit RS-232 signals up to 825ft. Besides flawless signal, the transmitter also sends power to the receiver, so no external power source is required.

Input: 1 x RS-232

Output: 1 x RS-232

Transmission: CAT5/6/7

Features:

- Quick and easy installation
- Extends any RS232 compliant device up to 300 meters from source to display
- Perfect for digital signage applications
- Includes 5V DC power supply, user manual



Front



Back





VGA WALL PLATE EXTENDER SET OVER CAT5/6/7 AT-WPVGA-SR

This plug-and-play passive VGA wall plate transmitter and receiver set can transmit a perfect video signal up to 330 feet via a single CAT5/6/7 cable with resolutions up to 1280 x 1024 pixels (at 200 ft). The VGA Transmitter and Receiver Kit is easy to install and requires no external power – an excellent solution for classrooms, offices and data centers.

Transmitter Input: 1 x VGA

Receiver Output: 1 x VGA

Transmission: CAT5/6/7

Features:

- Extends signals up to 330 ft via a single CAT5/6/7 cable
- Resolution up to 1280 x 1024
- Plug and Play, no drivers or software needed
- No external power required



VGA EXTENDER SET OVER CAT5/6/7 AT-VGA100-R/S

This passive VGA box receiver and transmitter Extender set send flawless high resolution signal via a CAT5/6/7 cable. This unit is also compatible with model AT-WPVGA-S.

Input: 1 x VGA

Output: 1 x VGA

Transmission: CAT5/6/7

Features:

- Supports resolutions up to 1280x1024
- Plug and Play, no drivers or software needed
- Mix and match with other Atlona VGA transmitters
- No external power required



VGA STEREO AUDIO EXTENDER SET OVER CAT5/6/7 AT-RGB45SR

Extend your high-definition audio and video transmissions up to 150ft with this VGA stereo audio extender set. Using a single CAT5/6/7 cable, this set is also compatible with VGA/component adapters, so it's able to transmit component video signal as well.

Input: 1 x VGA, 1 x 3.5mm stereo audio

Output: 1 x VGA, 1 x 3.5mm stereo audio

Transmission: CAT5/6/7

Features:

- Full DDC Pass-through
- Supports resolutions up to WUXGA (1920x1200)
- Supports Hot Plug Detect
- Includes 2 5V DC power supplies, user manual



Extenders

1X3 VGA+STEREO AUDIO EXTENDER SET OVER CAT5/6/7 AT-2VGA300SL/RL

This VGA and stereo audio extender set transmits and receives high resolution signal over distances up to 1000ft, using a single UTP CAT5/6/7 cable.

Input: 1 x VGA; 1 x 3.5mm stereo audio

Output: 1 x VGA (loopout); 1 x 3.5mm stereo audio

Transmission: 2 x CAT5/6/7

Features:

- Supports resolutions up to 1600x1200 at 85Hz (1000ft)
- Supports analog stereo audio
- Two separate CAT5/6/7 outputs
- Includes 1 5V DC power supply, 1 3ft VGA cable, 1 3ft 3.5mm stereo audio cable, user manual



1X5 VGA+STEREO AUDIO EXTENDER SET OVER CAT5/6/7 AT-4VGA300SL

This VGA with Stereo audio transmitter and receiver Extender set uses a single UTP CAT5/6/7 cable to transmit flawless video and audio. These units increase outputs.

Input: 1 x VGA; 1 x 3.5mm stereo audio

Output: 1 x VGA (loopout); 1 x 3.5mm stereo audio

Transmission: 4 x CAT5/6/7

Features:

- Supports resolutions up to 1600x1200 at 85Hz (1000ft)
- Four separate CAT5/6/7 outputs
- Supports analog stereo audio
- Includes 1 5V DC power supply, 1 3ft VGA cable, 1 3ft 3.5mm stereo audio cable, user manual



VGA+STEREO AUDIO EXTENDER SET OVER CAT5/6/7 AT-VGA300RL

This VGA with Stereo audio receiver and transmitter Extender uses a single UTP CAT5/6/7 cable to transmit and receive flawless video and audio. These units can be daisy-chained with another receiver to extend range further distances and to multiple displays.

Input: 1 x CAT5/6/7

Output: 1 x VGA; 1 x 3.5mm stereo audio; 1 x CAT5/6/7 (loopout)

Transmission: CAT5/6/7

Features:

- Supports resolutions up to 1600x1200 @85Hz and distances up to 1000ft (300M)
- Built-in EQ and gain adjustment
- Daisy-chain function
- Supports analog stereo audio
- Includes 1 5V DC power supply, 2 skew immunized adapters, user manual



VGA/RGB EXTENDER SET OVER FIBER OPTIC AT-RGBF30R-IR/S-IR

A built-in equalizer and infrared pass-through make this box style video Extender Set easy to use and strong enough for any commercial or industrial environment. A single fiber-optic cable is all that's needed to transmit high resolution video, audio, DDV, RS-232, IR, and AUX audio.



- Input:** Fiber optic
Output: 1 x VGA (Component with adaptor); 1 x IR 3.5mm
Transmission: Fiber optic
Features:
- Supports resolutions up to 1080p
 - DDC support
 - RS-232 compatible
 - UL Class A certified
 - Includes harness-style adapter (for RS-232 and audio), 1 5V power supply, user manual



VGA+AUDIO EXTENDER OVER CAT5/6/7 AT-VGA180ASR

The smallest VGA extender in the industry, this powerful plug-and-play kit transmits VGA and audio signals up to 600ft using a single CAT5/6/7 cable. Both the transmitter and receiver are equipped with LED indicators, making it easy to monitor system status. The transmitter takes its power from the USB port of a computer (NOTE: if no computer is being used, unit requires USB to power adapter, sold separately).

- Input:** 1 x VGA; 1 x 3.5mm stereo audio
Output: 1 x VGA; 1 x 3.5mm stereo audio
Transmission: CAT5/6/7
Features:
- Supports resolutions up to 1080p and 2048x1536 (600ft)
 - UTP/STP compatible
 - Built-in EQ
 - Includes 1 5V power supply, user manual



VGA+AUDIO EXTENDER SET WITH RS-232 OVER CAT5/6/7 AT-VGA-RS300SRS

The extender set includes a twisted pair transmitter and receiver designed to transmit high resolution VGA, stereo/digital audio, RS-232, and IR signals up to 1000ft, with a CAT5/6/7 cable. Both units are shielded to prevent environmental interference.

- Input:** 1 x VGA; 1 x RS-232; 1 x 3.5mm stereo audio; 1 x digital coaxial; 1 x IR 3.5mm
Output: 1 x VGA; 1 x RS-232; 1 x 3.5 mm stereo audio; 1 x digital coaxial; 1 x IR 3.5mm
Transmission: CAT5/6/7
Features:
- Transmitter features local VGA and audio loop-out for active local display, without a separate splitter
 - Built-in EQ and gain control.
 - Supports resolutions up to 1080p or 1920x1200
 - Includes 2 5V DC power supplies , 1 IR emitter, 1 IR receiver, user manual



Extenders



COMPONENT+ANALOG/DIGITAL AUDIO EXTENDER SET OVER CAT5/6/7 AT-COMP300SL/RL

Receiver and Transmitter (sold separately) transmit high resolution Component video with analog/digital audio signal over a single UTP CAT5/6/7 cable. Built-in EQ and gain adjustment allow for flawless transmission, even at longer distances.

Input: 1 x Component; 1 x RCA stereo audio; 1 x digital coaxial

Output: 1 x Component; 1 x RCA stereo audio; 1 x digital coaxial

Transmission: CAT5/6/7

Features:

- Supports resolutions up to 1080p and distances up to 1000ft (300M)
- Supports Dolby Digital, DTS (pass-through only)
- Digital transmission of analog stereo audio eliminates sound distortion
- Includes 1 5V DC power supply, user manual



Back

Front



Back

Front

COMPONENT+2 MONO AUDIO EXTENDER SET OVER CAT5/6/7 AT-COMP150SR

Use a single CAT5/6/7 cable to transmit high resolution component or Composite video and 2-channel mono audio, with this extender kit. No external power supply is required, making for fast and easy installation.

Input: 1 x Component; 1 x RCA mono audio

Output: 1 x Component; 1 x RCA mono audio

Transmission: CAT5/6/7

Features:

- Supports resolutions up to 720p or 1080i and distances up to 1000ft (300M)
- Wall mountable
- Passive and no power required
- Supports Component and Composite video and 2 channel mono audio

DVI EXTENDER SET OVER HDBASE-T AT-DVI4-100SR

Easily extend any DVI source with this extender kit. The AT-DVI4-100SR supports bidirectional RS-232, IR, and Ethernet pass-through using a single CAT5/6/7 cable, allowing for transmission of uncompressed video at distances up to 350ft.

Input: 1 x DVI; 1 x Ethernet; 1 x IR 3,5mm 1 x RS-232

Output: 1 x DVI, 1 x Ethernet; 1 x IR 3,5mm, 1 x RS-232

Transmission: HDBaseT

Features:

- HDBaseT technology allows full uncompressed 48-bit video transmission
- HDCP and EDID compliant
- Supports all Vesa formats
- Supports all resolutions up to 2k or 1920x1200 and 1080p
- Extends DVI transmission up to 330ft with resolution up to 2Kx1K
- Includes 1 transmitter; 1 receiver; 2 5V DC locking power supplies (universal 110/220V); 1 set of wall mount brackets; 2 emitter sensors; 2 receiver sensors; user manual



DVI EXTENDER OVER CAT5/6/7 AT-DVI15SRS

This passive DVI extender uses a single CAT5/6/7 cable to transmit flawless high resolution signal up to 100ft. No additional power supply is required, which makes for fast and easy installation.

Input: DVI-D

Output: DVI-D

Transmission: CAT5/6/7

Features:

- Supports resolutions up to 1280x1024 (100ft) and 1920x1200 (50ft)
- Direct plug-in
- Fully HDCP and EDID compliant
- Includes 1 transmitter; 1 receiver; user manual



DVI PASSIVE EXTENDER OVER CAT5/6/7 AT-DVI60SRS

This passive DVI extender uses a single CAT5/6/7 cable to transmit flawless high resolution signal up to 180ft. No additional power supply is required, which makes for fast and easy installation.

Input: DVI-D

Output: DVI-D

Transmission: CAT5/6/7

Features:

- Supports resolutions up to 1920x1200 (160ft)
- DVI 1.1 compliant
- Direct plug-in
- Includes 1 transmitter; 1 receiver; user manual



DUAL LINK DVI EXTENDER SET OVER 3X CAT5/6/7 AT-DVID30SR

The ATDVID30SR set transmits high resolution signal over long distances, using three CAT5/6/7 cables. Enjoy crystal clear transmission, thanks to a built-in equalizer and Hot Plug Detect that help you avoid signal degradation.

Input: DVI

Output: DVI

Transmission: CAT5/6/7

Features:

- Supports resolutions up to 2560x1600, at distances up to 125ft
- DVI 1.0, HDCP1.1, and HDMI compliant
- Supports EDID and CEC
- Passive receiver unit requires no external power source
- Includes 1 transmitter; 1 receiver; 1 5V DC power supply; user manual



Extenders

VIDEO EXTENDER SETS OVER FIBER OPTIC

These extender sets work cooperatively with one of several Atlona transmitter models to send high resolution video, EDID and HDCP through a single multi-mode fiber cable. Compatible transmitter units (sold separately)

AT-DVIF30S-IR/R-IR

Input: 1 x DVI; 1 x IR 3.5mm; 1 x RS-232 (captive screw termination); 1 x stereo audio (captive screw termination)

Output: 1 x DVI; 1 x IR 3.5mm; 1 x RS-232 (captive screw termination); 1 x stereo audio (captive screw termination)

AT-HDF30S-IR/R-IR

Input: 1 x HDMI; 1 x IR 3.5mm; 1 x RS-232 (captive screw termination); 1 x stereo audio (captive screw termination)

Output: 1 x HDMI; 1 x IR 3.5mm; 1 x RS-232 (captive screw termination); 1 x stereo audio (captive screw termination)

AT-RGBF30S-IR/R-IR

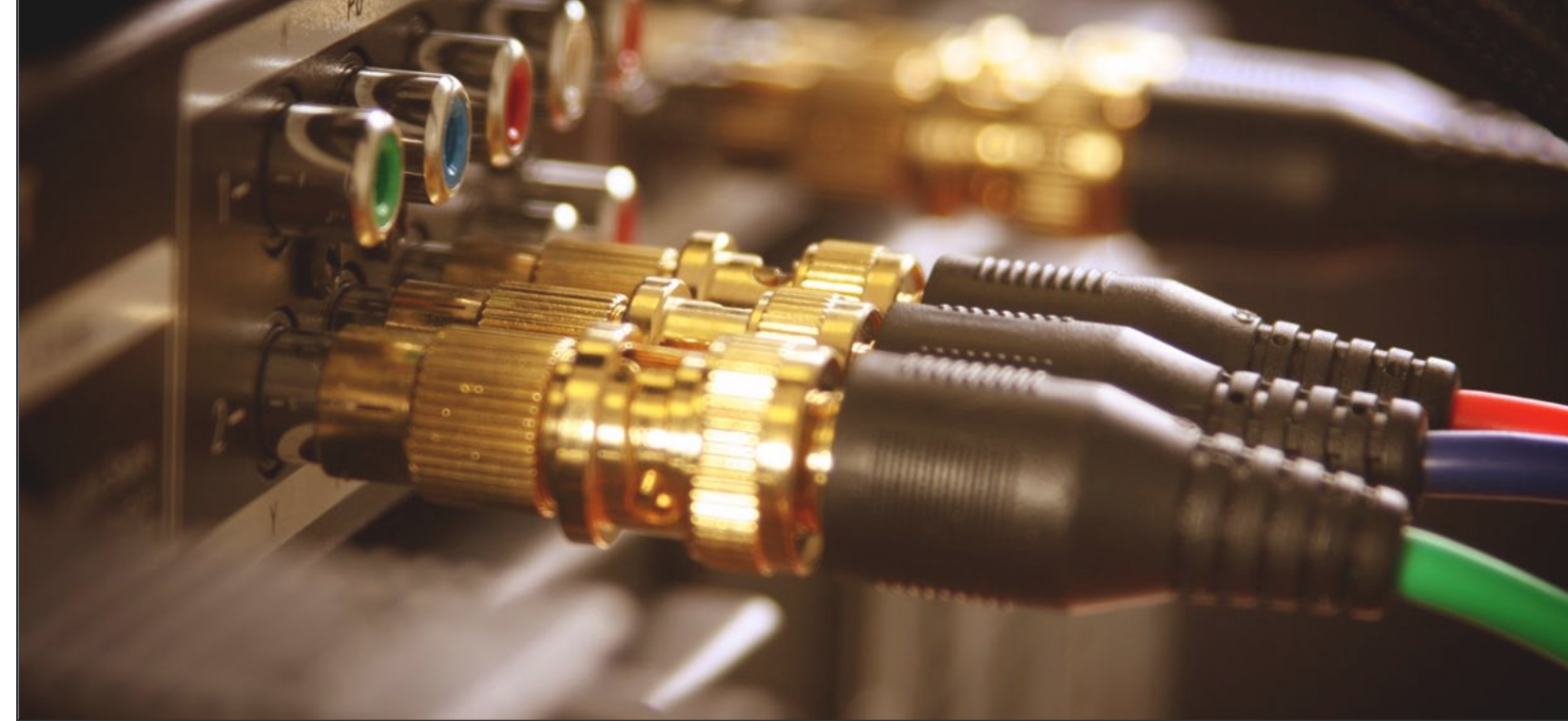
Input: 1 x VGA (Component with adaptor); 1 x IR 3.5mm (captive screw termination); 1 x RS-232 (captive screw termination); 1 x stereo audio (captive screw termination)

Output: 1 x VGA (Component with adaptor); 1 x IR 3.5mm (captive screw termination); 1 x RS-232 (captive screw termination); 1 x stereo audio (captive screw termination)

Transmission: Fiber optic (SC)

Features:

- Supports resolutions up to 1080p, 1920x1200 (1200ft), 1600x1200 (1500FT), 1280x1024 (4000ft)
- UL Class A certified
- Built-in EW
- Fully bidirectional EDID/DDC communication
- Includes 1 harness style adapter; 1 5V/1A power supply; user manual



VIDEO WALL PLATE EXTENDER KITS OVER FIBER OPTIC

These Wall Plate Extender Kits work cooperatively with one of several Atlona receiver models to transmit high resolution video, EDID and HDCP through a single fiber cable. Compatible receiver units (sold separately)

AT-DVIF20S/R

Input: 1 x DVI

Output: 1 x DVI

AT-DVIFW10S/R

Input: 1 x DVI

Output: 1 x DVI

AT-HDF20S/R

Input: 1 x HDMI

Output: 1 x HDMI

AT-HDFW10S/R

Input: 1 x HDMI

Output: 1 x HDMI

Transmission: Fiber optic (SC)

Features:

- Supports resolutions up to 1080p, 1920x1200 (1200ft), 1600x1200 (1500ft) and 1280x1024 (4000ft)
- UL Class A Certified
- Built-in EQ
- Includes user manual





Converters help connect the 10+ commonly used video sources and output displays in the AV world. Our line of converters and scalers overcome the impossible – enabling connections between any video format. Designed to meet the stringent requirements of commercial and military applications, Atlona converters and scalers are as easy to install and operate.

Converters & Scalers

2-WAY DIGITAL AUDIO CONVERTER AT-AD2

The AT-AD2 unit easily converts digital audio from optical/Toslink to coaxial (and vice versa). A built-in amplification feature allows the unit to function as an audio repeater, and to double the standard transmission distance.

Input: 1 x Digital coaxial; 1 x Toslink

Output: 1 x Digital coaxial; 1 x Toslink

Features:

- Supports amplification of S/PDIF audio
- Supports simultaneous transmission of coaxial and Toslink outputs
- Easy installation
- Includes 5V DC power supply, user manual



DVI EDID READER/WRIER AT-DVISYNC

This EDID reader/writer can copy, store and recall EDID information from any display, while maintaining resolution. This comprehensive unit ensures lossless communication between computers and displays.

Input: 1x DVI; 1x RS-232

Output: 1x DVI

Features:

- For use with Mac or PC
- RS-232 controllable, compatible with all third party control systems
- No power supply required after initial programming
- Includes 5VDC power supply, user manual



COMPONENT TO HDMI CONVERTER AT-COMP-HDMI

Effortlessly convert analog Component (YPrPB/YCrCb), and audio signals to digital HDMI with the AT-COMP-HDMI converter. This compact device allows users to connect DVD players or set-top box equipment to HDMI displays.

Input: Component video; 1 x Toslink

Output: 1 x HDMI

Features:

- Supports resolutions up to 1920x1080 and 1080p
- Compact size and easy to install
- Enables you to connect Component and Toslink output sources to HDMI displays
- Includes 5VDC power supply, 3ft Component video cable, user manual



HDMI EDID RECORDER/WRIER AT-HDSYNC

Copy, store, recall, and emulate EDID information with this recorder/writer device. The AT-HDSync stores EDID information, supports HDCP handshaking, and allows for direct communication with HDMI displays while maintaining the integrity of the resolution. The device can also generate a missing hot plug, ensuring flawless syncing of HDCP and EDID.

Input: 1 x HDMI; 1 x RS-232

Output: 1 x HDMI

Features:

- HDMI, DVI 1.0 and HDCP 1.1 compliant
- RS-232 controllable, compatible with all 3rd party control systems
- Prevents computers from deactivating inactive HDMI ports
- Program EDID information directly into the unit
- Includes 5V DC power supply, user manual



DVI + AUDIO TO HDMI CONVERTER AT-HD610

Streamline and transmit a DVI, 3.5mm audio, and/or an S/PDIF audio signal via a single HDMI cable, using the AT-HD610. Easily integrate and connect your audio and video sources to a display or audio receiver.

Input: 1 x DVI; 1 x RCA; 1 3.5mm stereo audio

Output: 1 x HDMI

Features:

- HDMI and HDCP 2.0 compliant
- Supports resolutions up to 1920x1200 and 1080p
- EDID learning mode
- Includes 5V DC locking power supply, mounting brackets, user manual

HDMI AUDIO DE-EMBEDDER AT-HD570

Use the AT-HD570 to de-embed audio signal from an HDMI input and route it to an optical or multi-channel analog output.

Input: 1 x HDMI

Output: 1 x HDMI; 1 x optical (Toslink); 4 x 3.5mm for multi-channel audio

Features:

- Supports high-definition resolutions up to 1080p, as well as 3D Signals, Deep Color.
- Supports Dolby TrueHD and DTS-HD Master Audio, Dolby Digital, DTS 5.1, 2ch, and LPCM 2ch outputs (pass-through only)
- Includes 5V DC power supply adapter; 3.5mm to L/R female RCA adapter, user manual



HDMI TO VGA/COMPONENT CONVERTER AT-HD420

Down-convert non-HDCP HDMI to S-Video or Composite video with audio

Input: 1 x HDMI

Output: 1 x VGA (Component with adaptor); 1 x 3.5mm stereo audio

Features:

- Supports resolution up to 1920x1200 or 1080p
- Embedded EDID informs source output
- HDMI and DVI compliant
- Includes 1 VGA to component adaptor cable, 5V DC power supply (universal 110/220V), user manual



HDMI/DVI TO COMPOSITE/S-VIDEO CONVERTER AT-HD530

Down-convert non-HDCP HDMI to S-Video or Composite video with audio.

Input: 1x HDMI, 1 x digital Coaxial

Output: 1 x Composite video with stereo audio (RCA); 1 x S-Video with stereo audio (RCA), 1 x HDMI, 1 x digital Coaxial

Features:

- Supports resolutions up to 1600x1200@60Hz or 1080p PAL, NTSC Compatible
- Selectable output video format
- HDMI/DVI loop-out
- Includes 5V DC power supply, user manual



3G/HD/SD-SDI TO HDMI CONVERTER AT-3GSDI-HD2

This digital converter flawlessly transmits 3G/HD/SD-SDI signals to HDMI with stereo audio. This device supports all audio formats (up to 8-channel), with options to transmit signal via HDMI or stereo audio output.

Input: 1 x SDI

Output: 1 x HDMI; 1 x SDI

Features:

- Re-clocked SDI loop allows for daisy chaining or connection to local SDI display
- Compatible with AT-14048 HDMI to DVI Adapter with Screw Lock (sold separately)
- Supports embedded audio up to 8 channel
- Includes 5V DC power supply, user manual

COMPONENT TO S-VIDEO/COMPOSITE CONVERTER AT-COMP500

Use the AT-COMP500 down-scan converter to convert Component video to Composite or S-Video.

Input: 1 x Component

Output: 1 x Component pass-through (YPbPr); 1 x Composite; 1 x S-Video

Features:

- Supports resolutions including 480p, 576p, 720p, 1080i, and 1080p,
- PAL, NTSC Compatible
- Image overscan/underscan selection
- Includes 5V DC power supply, user manual



HDMI TO 3G/HD/SD-SDI CONVERTER AT-HD-3GSDI

Use the AT-HD-3GSDI to smoothly convert HDMI to 3G/HD/SD-SDI in real time. The device supports 8 channel, 7.1 channel, or 5.1 channel audio, and offers two SDI outputs that allow for daisy chaining or transmission to multiple monitors.

Input: 1 x HDMI

Output: 2 x SDI (BNC)

Features:

- Supports 3G formats 1080p, 1080i, 720p
- Supports HD formats 1080i, 1035i, 720p
- Supports PAL and NTSC
- External DIP switch configuration
- Includes 5V DC power supply, 1 HDMI-to-HDMI adapter, user manual



PC TO HDMI CONVERTER/SCALER AT-HD500

Upscale any high-resolution PC video signal to HDMI (up to 1080p and 1920x1200), and combine it with digital/analog audio that is simultaneously output to HDMI, Toslink, and mini-stereo.

Input: 1 x VGA, 1 x 3.5mm stereo audio, 1 x Toslink

Output: 1 x HDMI, 1 x 3.5mm stereo audio, 1 x Toslink

Features:

- Automatically detects and adjusts factory settings for maximum resolution and refresh rate
- User can adjust contrast, brightness, hue, saturation, sharpness, RGB level, and aspect ratio
- Supports RGBS, RGB+HV, and RGB input formats
- Includes 5V DC power supply, user manual



DVI TO DVI CONVERTER/SCALER AT-DVI550

Mix and match your standard and DVI displays with the plug-and-play AT-DVI550. Hook this up to multiple monitors, DVI matrix switchers, or DVI distribution amplifiers and the AT-HD500 can align mismatched display resolutions to the same high resolution.

OPTIONAL USB POWER SUPPLY

Input: 1 x DVI

Output: 1 x DVI

Features:

- HDCP 1.1 and DVI 1.0 compliant
- Supports up to 36-bit Deep Color
- Supports resolutions up to 1080@60, 1920x1200
- Includes 5V DC power supply, user manual



COMPOSITE VIDEO TO VGA CONVERTER/SCALER AT-RGB110

Easily convert Composite video signal to VGA with the AT-RGB110. This plug-and-play converter/scaler is compatible with NTSC and PAL video formats.

Input: 1 x Composite video (BNC)

Output: 1 x VGA

Features:

- Supports resolutions up to 1440x900 (WXGA+)
- Ability to flip the image vertically. Perfect for cameras used in security systems.
- Locking BNC input ensures reliable connection
- Includes BNC to RCA adapter, 5V DC power supply, user manual



COMPOSITE/S-VIDEO TO COMPONENT/VGA CONVERTER/SCALER AT-AVS100

Convert and scale Composite video or S-Video to Component video or VGA with the AT-AVS100. Resolution capability ranges from 480p to 1080p and from 640x480 to 1600x1200. The device supports both NTSC and PAL formats.

Input: 1 x Composite video, 1 x S-Video

Output: 1 x VGA (Component with adaptor)

Features:

- 3D motion adaptive YNR/CNR noise reduction technology
- Advance de-interlacing technology
- Supports 2:2 and 3:2 film mode detection
- Includes VGA to Component video cable, 5V DC power supply, user manual



HDMI TO HDMI CONVERTER/SCALER AT-HD550

Mix and match your standard and HDMI displays with the plug-and-play AT-HD550. Hook this up to multiple monitors, matrix switchers, or distribution amplifiers and the AT-HD550 can align mismatched display resolutions to the same high resolution.

Input: 1 x HDMI

Output: 1 x HDMI

Features:

- 3D capable; HDMI, HDCP 1.1, and DVI 1.0 compliant
- Supports up to 36-bit Deep Color
- Supports resolutions 480@60, 720@60, 1080@60, and up to 1920x1200
- Includes 5V DC power supply (universal), user manual

COMPOSITE VIDEO TO HDMI CONVERTER/SCALER AT-HD120

The AT-HD120 streamlines Composite video and stereo audio outputs into a single HDMI cable. The plug-and-play device features onscreen control for output resolution adjustment.

Input: 1 x Composite video (BNC), 1 x 3.5mm stereo audio

Output: 1 x HDMI

Features:

- Supports resolutions up to 1080p and 1600x1200
- Scales lower resolution signals to higher resolution for HD video use
- Compatible with NTSC and PAL video formats
- Includes 5V power supply, 1 BNC to RCA adapter, user manual



Converters & Scalers



PAL HDMI TO NTSC HDMI CONVERTER AT-HD560

This advanced HDMI to HDMI scaler can automatically detect native settings of a display and adjust the output to allow for corresponding resolution and refresh rate. Use it to scale resolutions up or down, plus convert PAL and NTSC sources and displays.

Input: 1 x HDMI; 1 x Toslink; 1 x 3.5mm stereo audio

Output: 1 x HDMI; 1 x Toslink; 1 x 3.5mm stereo audio

Features:

- Supports resolutions up to 1080p and 50/60Hz frame conversion
- Provides output picture adjustment on brightness, hue, saturation, sharpness, RGB level, and scan size
- Supports 3D motion video adaptive, 3D interlacing, and 3:2/2:2 pull-down detection and recovery
- Includes 5V DC power supply, user manual



VGA CONVERTER/SCALER AT-VGA300CV

This VGA to Component video scaler features an HD-15 loop-out for connection to local monitors. The AT-VGA300CV supports resolutions up to 1080p, which can be manually adjusted for optimum viewing.

Input: 1 x VGA

Output: 1 x VGA

Features:

- User can adjust contrast, brightness, hue, saturation, sharpness, RGB level, and aspect ratio
- Scales PC resolution for HD video use
- Supports RGBHV resolution, with additional firmware
- Includes 5V DC power supply, 3ft VGA to Component video cable, user manual



COMPOSITE/S-VIDEO TO HDMI CONVERTER/SCALER AT-HD520

Upgrade analog Composite or S-Video video signal to digital HDMI. This device automatically detects and supports PAL to NTSC connection (and vice versa), and converts analog audio to HDMI.

Input: 1 x Composite video, 1 x S-Video, 1 x RCA stereo audio, 1 x Toslink

Output: 1 x HDMI; 1 x 3.5mm stereo audio; 1 x Toslink

Features:

- Supports resolutions up to 1080p and 1920x1200
- Supports PAL and NTSC formats
- Supports 3D motion video adaptive, 3D interlacing, and 3:2/2:2 pull-down detection
- Includes 5V DC power supply adapter, IR remote, user manual



DVI TO VGA/COMPONENT SCALER AT-PC530

This advanced scaler down-converts digital DVI signals to analog Component or VGA signals with DVI loop-out. The HDCP compliant device supports resolutions up to 1920x1200 and can scale up to 1080p and 1920x1080. A built-in IR control and on-screen display allows for easy user adjustments.

Input: 1 x DVI

Output: 1 x Component video, 1 x VGA, 1 x DVI loop-out

Features:

- DVI loop-out/pass-through for multiple display support
- On screen display allows user to control contrast, brightness, hue, saturation, sharpness, RGB level, and H-V position
- Noise reduction and overscan/underscan adjustment options
- Includes 5V DC power supply, IR remote; user manual



PC/COMPONENT TO HDMI CONVERTER/SCALER AT-HD510VGA

Upscale and transmit any VGA and analog/digital audio signal to HDMI with the AT-HD510VGA. The device can automatically detect and adjust for native display resolutions and refresh rates.

Input: 1 x VGA (Component with adaptor), 1 x 3.5mm stereo audio, 1 x Toslink

Output: 1 x HDMI, 1 x VGA (Component with adaptor), 1 x 3.5mm stereo audio, 1 x Toslink

Features:

- Local Video Output (VGA) could output PC or Component signal
- Supports resolutions up to 1920x1200 and 1080p
- User can adjust contrast, brightness, hue, saturation, sharpness, RGB level, and aspect ratio
- Includes 5V DC power supply, user manual



MULTI-FORMAT 10-INPUT SWITCHER/ CONVERTER AT-HD600

This 10-input switcher streamlines multiple digital and analog signals to a single HDMI output, including embedded audio. The device can be easily controlled by RS-232, or manually or via an IR remote, supporting resolutions up to 1080p.

Input: 2 x Composite video, 2 x S-Video, 2 x Component video, 1 x VGA, 3 x HDMI, 1 x RS-232

Output: 1 x HDMI

Features:

- HDCP compliant, HDMI compatible
- Audio signal for every input gets embedded on to the HDMI output along with video
- Supports Deep Color up to 36-bit PAL, and NTSC compatible
- Includes 5V DC power supply, remote control, rack mounts, user manual

COMPOSITE/S-VIDEO TO HDMI SCALER AT-HD580

Upscale Composite video and S-Video with audio, and Dual HDMI signals to high resolution HDMI output with the AT-HD580. The device supports resolutions up to 1080p and 1920x1200. A comprehensive onscreen menu allows for easy user adjustments.

Input: 1 x Composite with stereo audio (RCA), 1 x S-Video with stereo audio (RCA), 2 x HDMI

Output: 1 x HDMI

Features:

- Automatically detects and adjusts for PAL and NTSC formatting
- DVI compatible (additional adapter required, sold separately)
- Operates via onscreen menu or remote control
- Includes 5V DC power supply, remote control, 6ft HDMI cable, user manual



MULTI-FORMAT VIDEO SWITCHER/SCALER AT-LINE-PRO2

The AT-LINE-PRO2 video scaler with HDMI output simultaneously transmits multiple resolutions and matches to native display settings. Upscale any input up to 1080p and 1920x1200 resolution. Audio can be digitized and encrypted for simultaneous video transmission over HDMI, or split to Digital coaxial and route through an audio receiver.

Input: 1 x Composite video with stereo audio (RCA), 1 x S-Video with stereo audio (RCA), 1 x Component video, 1 x RCA stereo audio, 1 x digital coaxial

Output: 1 x HDMI; 1 x Digital coaxial

Features:

- Supports PC RGB input up to WUXGA
- Supports PAL to NTSC conversion (and vice versa)
- HDCP compliant
- Includes VGA cable, 3 RCA cables, remote control, 5V DC power supply, user manual



10-INPUT MULTI-FORMAT SWITCHER/SCALER AT-LINE-PRO4-GEN2

This 10-input video and 7-input audio switcher streamlines HDMI, DVI, VGA, Component, Composite, and S-Video signals to a single HDMI output. The device can be easily controlled manually or via an IR remote, supporting resolutions up to 1080p and 1920x1200.

Input: 4 x HDMI, 3 x VGA, 1 x S-Video, 1 x Component video, 7 x 3.5mm stereo audio

Output: 1 x HDMI, 1 x 3.5mm stereo audio

Features:

- Control using RS-232 or IR remote
- Embedded audio from a DVI source to HDMI or de-embed audio from any connected devices to an amp
- Scales lower resolution signals to higher resolution for HD video use
- Includes 5V DC power supply, IR remote, rack mounts, user manual



11-INPUT MULTI-FORMAT SWITCHER/SCALER AT-LINE-PRO5-GEN2

This 11-input switcher with built-in scaler streamlines HDMI, DVI, VGA, Component, and Composite video signals to dual HDMI outputs. The device can be easily controlled manually, via RS-232, or via an IR remote, supporting resolutions up to 1080p and 1920x1200.

Input: 4 x HDMI, 1 x DVI; 2 x VGA, 2 x Component video, 2 x Composite video, 7 x 3.5mm stereo audio

Output: 2 x HDMI, 2 x 3.5mm stereo audio

Features:

- Embed audio from DVI source or de-embed and transmit to an amplifier
- Scales lower resolution signals to higher resolution for HD use
- Control using RS-232 or IR remote
- Includes 5V DC power supply, IR remote, rack mounts, user manual



SD/HD/3G-SDI TO COMPONENT/VGA SCALER AT-HSDI-VGA

The AT-HSDI-VGA scaler adapts SD, HD, and 3G-SDI signal to Component or VGA video formats. The device includes re-clocking technology, which allows for pristine SDI extension up to 1000ft at resolutions up to 1080p and 1920x1200.

Input: 1 x BNC

Output: 1 x BNC, 1 x VGA (Component with adaptor), 1 x S/PDIF; 1 x RCA stereo audio

Features:

- Built-in loop-out port for SDI signals
- Supports for resolutions up to 1920x1200 or 1080
- Built-in audio de-embedding, allowing for digital and analog transmission
- Includes 5V DC power supply, user manual



Cables



HDMI WITH ETHERNET CABLE

AT14036

- Lengths: 6 ft (1.82m)



HIGH-SPEED HDMI WITH ETHERNET CABLE

AT14039

- Lengths: 1.5 ft (0.5 m), 3 ft (1 m), 6 ft (2 m), 10 ft (3 m), 15 ft (5 m), 20 ft (6 m), 33 ft (10 m), 40 ft (12 m), 50 ft (15 m)



HDMI WITH ACTIVE AMPLIFICATION CABLE

AT14030L

- HDMI & 3D Capable
- Lengths: 1.5 ft (0.5 m), 3 ft (1 m), 6 ft (2 m), 10 ft (3 m), 15 ft (5 m), 20 ft (6 m), 33 ft (10 m), 40 ft (12 m), 50 ft (15 m)



S-VIDEO CABLE

AT19052

- Lengths: 3 ft (1 m), 6 ft (2 m), 12 ft (4 m), 15 ft (5 m), 23 ft (7 m)

AT19052L

- Lengths: 33 ft (10 m)



COMPOSITE TO 3.5 MM CABLE

AT19032

- Lengths: 6 ft (2 m), 12 ft (4 m)



OPTICAL CABLE

AT22010

- Lengths: 3 ft (1m), 6 ft (2 m), 10 ft (3 m), 15 ft (5 m), 25 ft (8 m),

AT22010L

- Lengths: 33 ft (10 m), 50 ft (15 m)



HIGH SPEED HDMI CABLE WITH SWIVEL CONNECTOR + ETHERNET

AT14038

- Lengths: 6 ft (2 m), 10 ft (3 m)



MICRO HDMI TO HDMI CABLE

AT14047

- HDMI type D to type A
- Lengths: 6 ft (2 m),



DVI TO HDMI BIDIRECTIONAL CABLE

AT14020

- Lengths: 3 ft (1 m), 6 ft (2 m), 10 ft (3 m), 13ft (4m), 15 ft (5 m), 23 ft (7 m), 25 ft (8 m)

AT22060L

- Lengths: 33 ft (10 m), 50 ft (15 m), 65 ft (20 m)



OPTICAL (TOSLINK) COUPLER

AT-OPT-FF

- Female to Female Adapter



DIGITAL COAX CABLE

AT22060

- Lengths: 3 ft (1 m), 6 ft (2 m), 10 ft (3 m), 12 ft (4 m), 15 ft (5 m), 23 ft (7m)

AT22060L

- Lengths: 33 ft (10 m), 50 ft (15 m)



RCA CABLE

AT19082

- Lengths: 3 ft (1 m), 6 ft (2 m), 12ft (4 m), 23ft (7m)

AT22080L

- Lengths: 33 ft (10 m), 50 ft (15 m)



DVI TO HDMI BIDIRECTIONAL CABLE

AT14022

- Lengths: 10 ft (3 m), 15 ft (5 m)



AT14040

DVI/HDMI ADAPTERS

AT14041



DVI DUAL LINK CABLE

AT14010

- Lengths: 3 ft (1 m), 6 ft (2 m), 10 ft (3 m), 15 ft (5 m), 25 ft (8 m)

AT14010L

- Lengths: 33 ft (10 m), 50 ft (15 m), 65 ft (20 m)



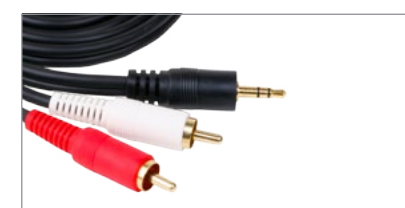
3.5 MM MINI TO RCA CABLE

AT22052

- Lengths: 6 ft (2 m), 10 ft (3 m), 15 ft (5 m), 25 ft (8m)

AT22052L

- Lengths: 33 ft (10 m), 50 ft (15 m), 80 ft (23 m), 100 ft (30 m)



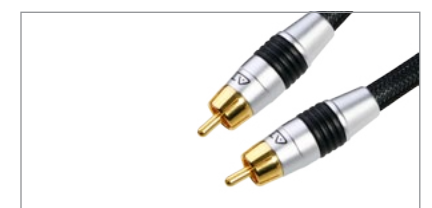
3.5 MM MINI TO RCA CABLE

AT21054

- Lengths: 6 ft (2 m), 10 ft (3 m), 15 ft (5 m), 25 ft (8m)

AT21054L

- Lengths: 33 ft (10 m), 50 ft (15 m), 80 ft (23 m), 100 ft (30 m)



SUBWOOFER CABLE

AT22030

- Lengths: 12 ft (4 m), 15 ft (5 m), 23 ft (7m)

AT22030L

- Lengths: 33 ft (10 m), 50 ft (15 m)

Cables



**DVI FEMALE ADAPTER
AT14043**



**VGA CABLE
AT18010**

- Male to Male
- Lengths: 3 ft (1 m), 6 ft (2 m), 10 ft (3 m), 15 ft (5 m), 25 ft (8 m)

AT18010L

- Lengths: 33 ft (10 m), 50 ft (15 m), 80 ft (23 m), 100 ft (30 m)



**VGA CABLE WITH
3.5MM STEREO AUDIO
AT18014**

- HDMI & 3D Capable
- Lengths: 6 ft (2 m), 10 ft (3 m), 15 ft (5 m), 25 ft (8 m),

AT18010L

- Lengths: 33 ft (10 m), 50 ft (15 m), 80 ft (23 m), 100 ft (30 m)



**DISPLAYPORT MALE MINI TO
MALE MINI CABLE AT13032-2**

- Designed for extending Mini DisplayPort-enabled displays further away from the computer
- Thunderbolt source compatible
- Length: 6 ft (1.82m)



**DISPLAYPORT MALE TO MALE
MINI CABLE AT13021-2**

- Ideal for connecting a DisplayPort-enabled PC or laptop to a Mini DisplayPort-enabled Apple® iMac® or Cinema Display.
- Thunderbolt source compatible
- Length: 6 ft (1.82m)



**DISPLAYPORT USB + MINI DISPLAYPORT
EXTENSION CABLE AT13033-2**

- Allows placement of Mini DisplayPort-enabled Apple displays further away from computer
- Thunderbolt source compatible
- Length: 6 ft (1.82m)



**VGA COUPLER CHARGER
AT18-027**



**VGA TO RGBHV BREAKOUT CABLE
AT19082**

- HDMI type D to type A
- Lengths: 6 ft (2 m), 12 ft (4 m), 23 ft (7 m)

AT19082L

- Lengths: 33 ft (10 m), 50 ft (15 m), 80 ft (23 m), 100 ft (30 m)



**VGA TO COMPONENT
BREAKOUT CABLE
AT19072**

- Lengths: 6 ft (2 m), 12 ft (4 m), 23 ft (7 m)

AT19072L

- Lengths: 33 ft (10 m)



**DISPLAYPORT MALE TO MALE
MINI ADAPTER AT13021-AD**

- Connects DisplayPort-enabled PCs and laptops to Mini DisplayPort-equipped monitors and displays
- Thunderbolt source compatible
- Length: 6 in (152.4mm)



**DISPLAYPORT MALE TO FEMALE
MINI ADAPTER AT13022-AD**

- Connects DisplayPort-enabled PCs and laptops to Mini DisplayPort-equipped monitors and displays
- Thunderbolt source compatible
- Length: 6 in (152.4mm)



**DISPLAYPORT MALE MINI TO
FEMALE DVI ADAPTER AT13027**

- Designed for connecting Mac notebooks with Mini DisplayPort/Thunderbolt output to computer monitors with DVI input
- Thunderbolt source compatible
- Length: 6 in (152.4mm)



**AT19082-ADF
VGA TO RGBHV BREAKOUT
VIDEO ADAPTERS
AT19082-ADM**



**VGA TO COMPONENT ADAPTER
AT19072-AD**



**COMPONENT CABLE
AT19072**

- Lengths: 3 ft (1 m), 6 ft (2 m), 12 ft (4 m), 15 ft (5 m), 23 ft (7 m),

AT19072L

- Lengths: 33 ft (10 m)



**DISPLAYPORT FEMALE TO
MALE MINI ADAPTER AT13029**

- Specially designed for connecting Apple computers and Monitors to Dell® and HP® computers/monitors
- Thunderbolt source compatible



**DISPLAYPORT FEMALE TO
FEMALE MINI ADAPTER AT13030**

- Ideal for converting and extending DisplayPort and Mini DisplayPort signals with existing extension cables
- Allows extension of existing DisplayPort and Mini DisplayPort cable connections



**DISPLAYPORT MALE MINI TO
FEMALE HDMI ADAPTER AT13034**

- Designed for connecting Mini DisplayPort/Thunderbolt-enabled computers to monitors with HDMI
- Thunderbolt source compatible

Cables



USB 2.0 A/B MALE TO MALE CABLE

- AT11008-2**
- Lengths: 6 ft (2 m), 10 ft (3 m), 15 ft (5 m)



USB 2.0 A/A MALE TO FEMALE EXTENSION

- AT11010**
- Lengths: 10 ft (3 m)



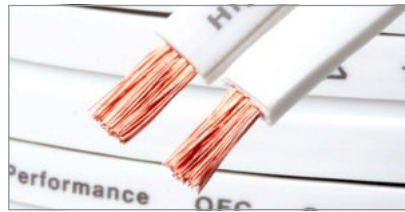
USB 3.0 A/A MALE TO MALE CABLE

- AT11012L**
- Lengths: 6 ft (2 m), 10 ft (3 m)



USB 3.0 A/B MALE TO MALE CABLE

- AT11014**
- Lengths: 6 ft (2 m), 10 ft (3 m)



14 GAUGE FLAT SPEAKER CABLE

- AT12114L**
- Lengths: 50 ft (15 m), 100 ft (30 m), 150 ft (45 m)



CAT5 PATCH CABLE (350MHZ)

- AT31015**
- Lengths: 3 ft (1 m), 10 ft (3 m), 20 ft (7 m), 25 ft (8 m)
- AT31015L**
- Lengths: 50 ft (15 m)



CAT5 PATCH CABLE (550MHZ)

- AT31016**
- Lengths: 3 ft (1 m), 10 ft (3 m), 20 ft (7 m), 25 ft (8 m)

- AT31016L**
- Lengths: 50 ft (15 m), 83 ft (25 m), 100 ft (30 m)



HDMI MALE TO MALE
AT14029



DVI MALE TO MALE
AT14009



HDMI MALE TO FEMALE
AT18007



Testing Kits

Testing Kits

DIGITAL CONNECTIVITY TESTING KIT KIT-PROHD3

The KIT-PROHD3 is designed to diagnose digital connectivity issues in AV systems. This tool kit enables both residential and commercial integrators and installers the ability to quickly diagnose digital connectivity issues, saving both time and overhead.

Features:

- The Portable HDMI Signal Generator (AT-HD800) sends a variety of high resolution testing patterns in multiple 2D/3D formats and provides onscreen readout of all EDID information from Display Data Channel (DDC)
- The 7-Inch Testing Monitor (AT-DIS7-PROHD) tests display capabilities of any digital AV system (HDMI, VGA, DVI, Component video) in real-time
- The HDMI EDID Reader/Writer (AT-HDSYNC) emulates compatible EDID information to fix any EDID, Hot Plug or sync issue
- Includes: 1 Portable HDMI Signal Generator (AT-HD800), 1 7-Inch Testing Monitor (AT-DIS7-PROHD), 1 HDMI EDID Reader/Writer (AT-HDSYNC), 1 Portable Battery (AT-BAT-DIS7PRO) for 7-Inch Testing Monitor, 1 Custom Carrying Case



7 INCH TESTING MONITOR AT-DIS7-PROHD

The AT-DIS7-PROHD is a 7-inch testing monitor designed to test display capabilities of any digital AV system in real-time.

Input: 1 x HDMI (DVI with adaptor); 1 x VGA (Component with adaptor)

Output: None

Features:

- 7" PRO HDMI, DVI, VGA and Component testing display
- Supports resolutions from 640x480 to 1920x1200 and 480p to 1080p
- HDMI input is fully compatible with DVI, able to accept VESA DVI resolutions up to 1920x1200
- HDCP compliant, displays content coming via HDMI/DVI is HDCP or not, perfect for troubleshooting.
- Professional quality display offers great brightness and contrast
- Capable of 3D testing



PORTABLE HDMI SIGNAL GENERATOR AT-HD800

The AT-HD800 is a Portable HDMI signal generator capable of testing any video resolution or timing in any digital format. The HD800 allows users to diagnose specific resolution, video timing, EDID, and color space issues in any DVI or HDMI video system.

Input: 1 x HDMI

Output: 1 x HDMI

Features:

- Portable size and battery operated HDMI generator
- EDID Reading function, allows user to view the display capabilities
- Supports 13 testing patterns, including 3 x 3D
- Computer testing resolutions: VGA, SVGA, XGA, SXGA, WUXGA
- HDTV testing resolutions: 480i, 576i, 480p, 576p, 720p (50/60Hz), 1080i (50/60Hz), 1080p (24/50/60)
- 3D HDTV testing: 720p (50/60Hz), 1080p (24Hz)
- EDID reading function allows user to view display capabilities



HDMI EDID READER/WRITER AT-HDSYNC

The AT-HDSync HDMI EDID Reader/Writer with Serial Control emulates EDID (Extended Display Identification Data) information. It stores the EDID information and recalls a default EDID setting in non-volatile memory that supports HDCP handshaking.

Input: 1 x HDMI; 1 x RS-232

Output: 1 x HDMI

Features:

- Prevent computers from deactivating inactive HDMI ports
- Able to write EDID into AT-HDSync
- Maintains HDMI video resolution
- RS-232 control allows users to program EDID information directly into the unit



© Atlona Technology 2012, All Rights Reserved
All trademarks are property of their respective owners.
All prices and specifications are subject to change without notice



ATLONA
Connecting technology to your world