

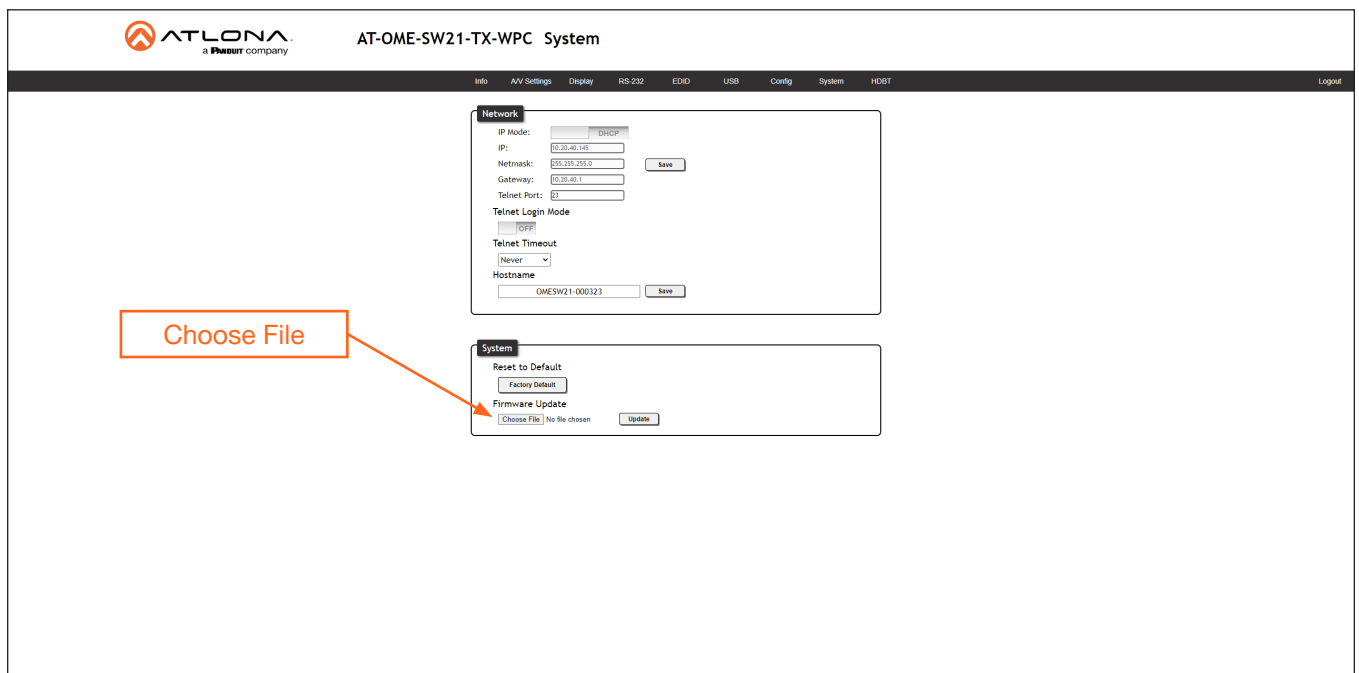
Update Instructions

Updating the firmware can be completed using either the USB interface or the built-in web server. Atlona recommends using the web server for updating the firmware. However, if a network connection is not available, the AT-OME-SW21-TX-WPC firmware can be updated using a USB-A to USB micro B cable.

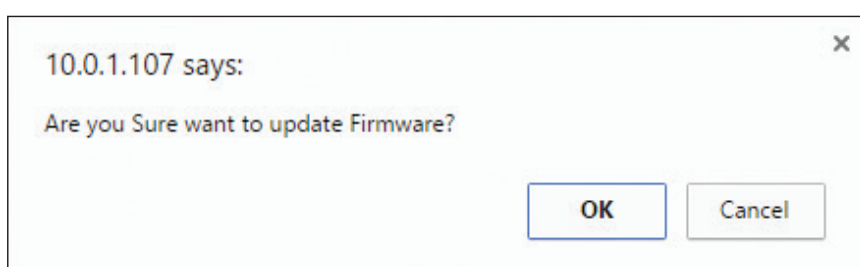
Using the Web Server

Requirements:

- AT-OME-SW21-TX-WPC
 - Firmware file
 - Computer running Windows
 - USB-A to micro USB cable
1. Connect an Ethernet cable from the computer, containing the firmware, to the same network where the AT-OME-SW21-TX-WPC is connected.
 2. Go to the **System** page in the web server.

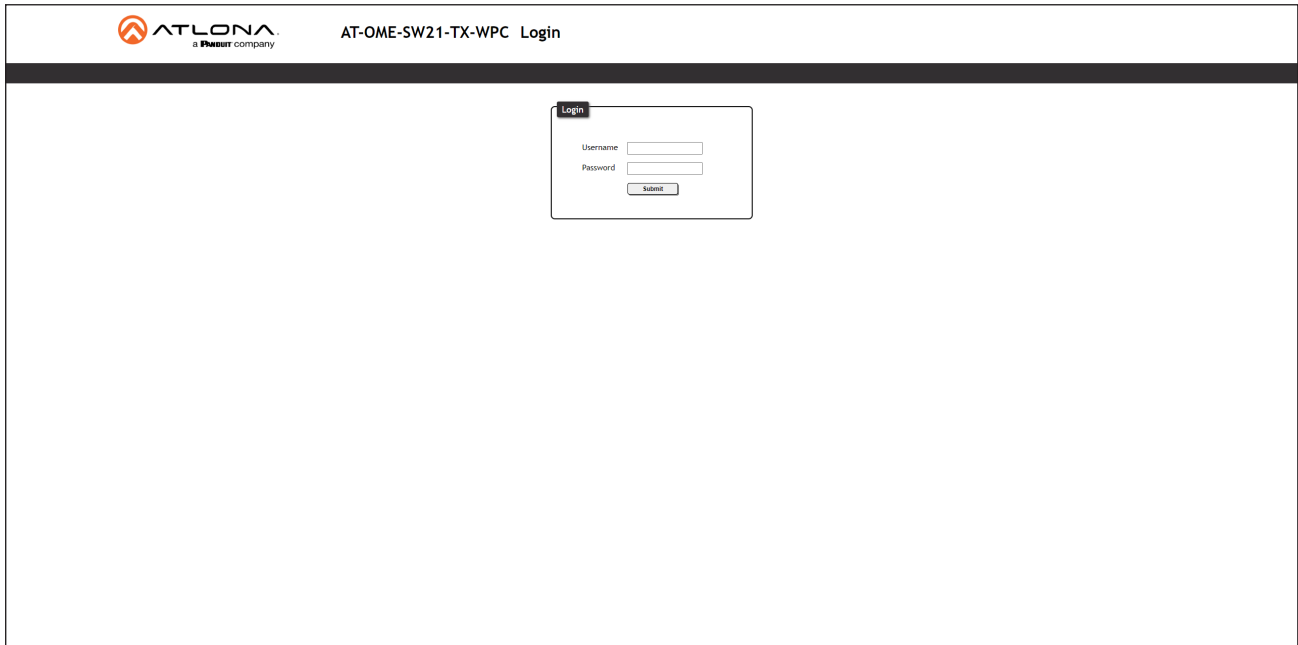


3. Click the **Choose File** button, under the **Firmware Update** section.
4. Browse to the location of the firmware file, select it, and click the **Open** button.
5. Click the **Update** button, under the **Firmware Update** section.
6. The following message box will be displayed.



Update Instructions

- Click the **OK** button to begin the firmware update process. Click the **Cancel** button to cancel the process.
- After the firmware update process is complete, the **Login** screen will be displayed.

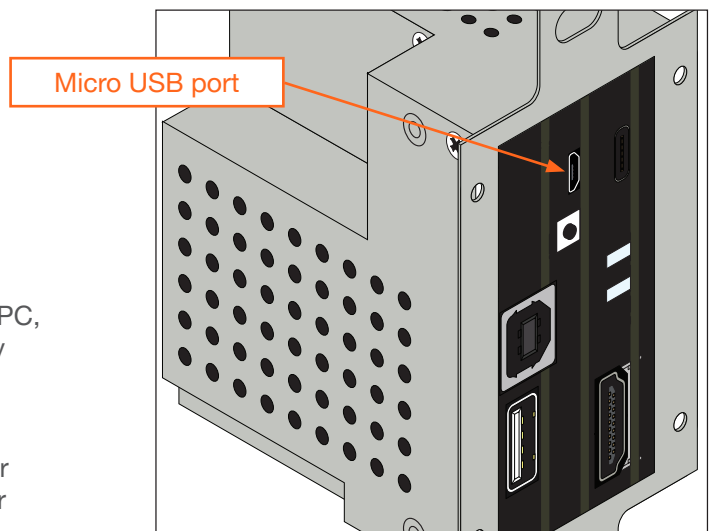


Using USB

Requirements:

- AT-OME-SW21-TX-WPC
- Firmware file
- Computer running Windows
- USB-A to micro USB cable

1. Disconnect power from the AT-OME-SW21-TX-WPC, which can be done by disconnecting the category cable from the HDBaseT port on the receiver.
2. Remove the faceplate to access the micro USB port, located above the PWR LED indicator. Refer to **Faceplate Removal and Assembly** in the User Manual for more information.

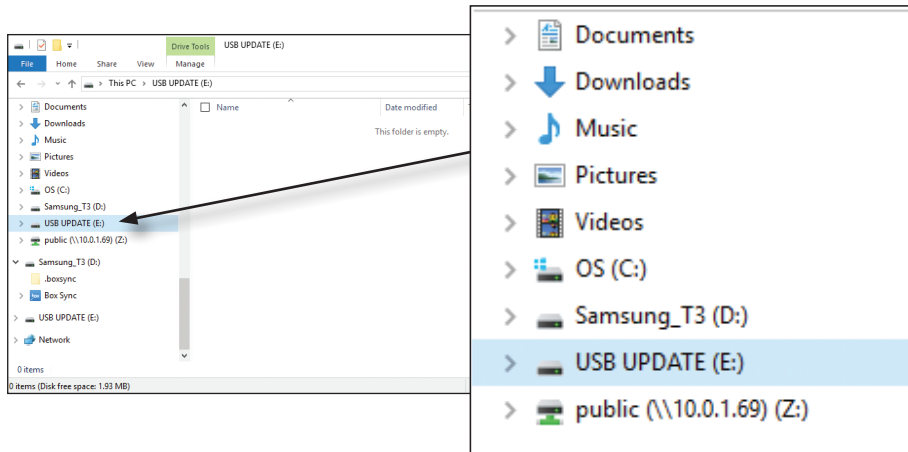


3. Connect a USB cable from the micro USB port on the AT-OME-SW21-TX-WPC to a PC, using a USB-A to micro USB cable.
4. Power the AT-OME-SW21-TX-WPC by reconnecting the HDBaseT cable on the receiver.

Update Instructions

5. The USB UPDATE folder will be displayed. If this folder is not displayed, automatically, select the USB UPDATE drive from Windows Explorer. Refer to the next page for an illustration.

If this folder is not displayed, automatically, select the USB UPDATE drive from Windows Explorer.



6. Delete all files from the USB UPDATE drive, if any are present.
7. Drag-and-drop the firmware file to the drive.
8. After the file has been copied, disconnect the USB cable from both the computer and the AT-OME-SW21-TX-WPC.
9. The firmware update process is complete.
10. Reconnect the Ethernet cable to the **HDBaseT OUT** port.