

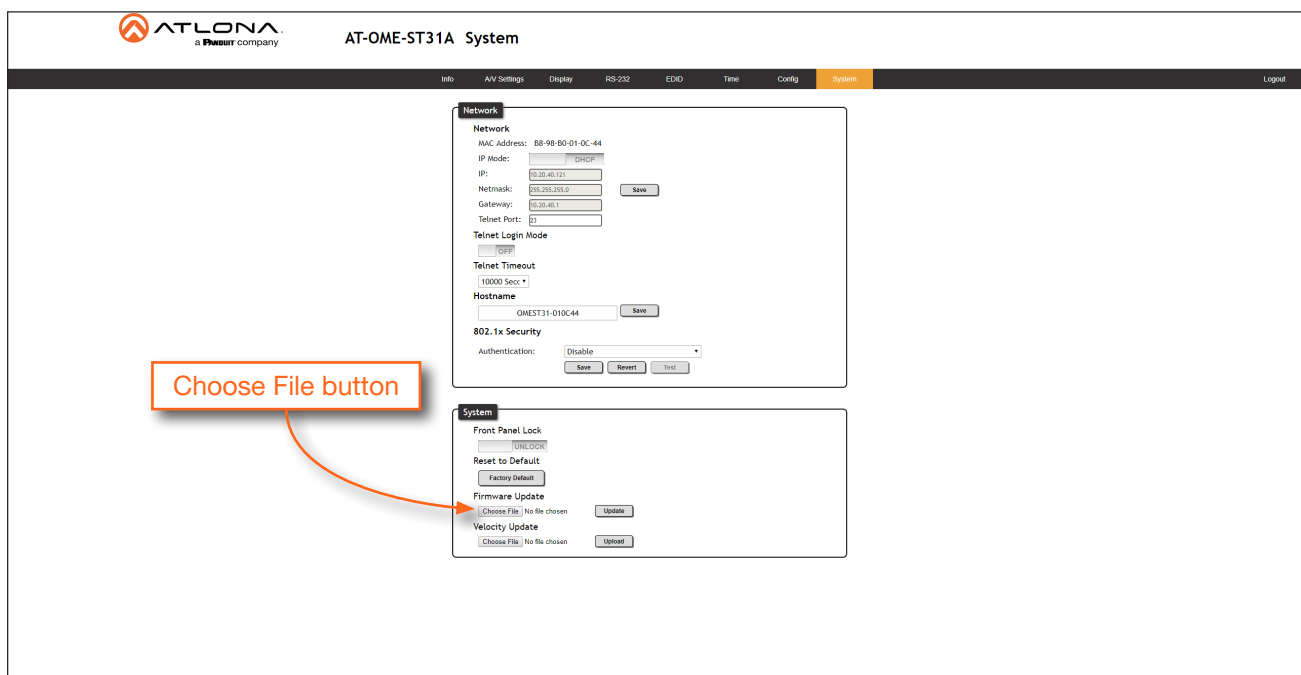
Update Instructions

Updating the firmware can be completed using either the USB interface or the built-in web server. Atlona recommends using the web server for updating the firmware. However, if a network connection is not available, the AT-OME-ST31A firmware can be updated using a USB-A to USB mini-B cable.

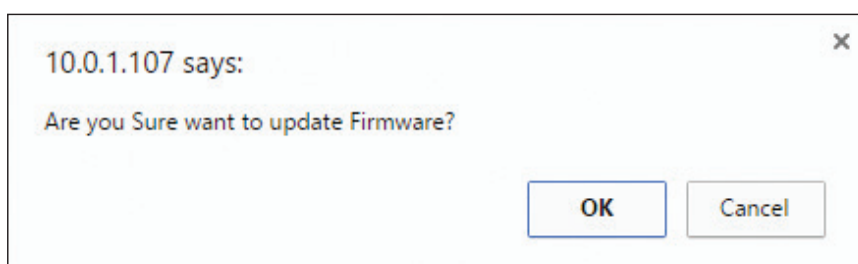
Using the Web Server

Requirements:

- AT-OME-ST31A
 - Firmware file
 - Computer running Microsoft Windows
1. Connect an Ethernet cable from the computer, containing the firmware, to the same network where the AT-OME-ST31A is connected.
 2. Launch a web browser and enter the IP address of the AT-OME-ST31A in the address bar.
 3. Login to the web GUI, then click **System** in the menu bar, near the top of the screen.

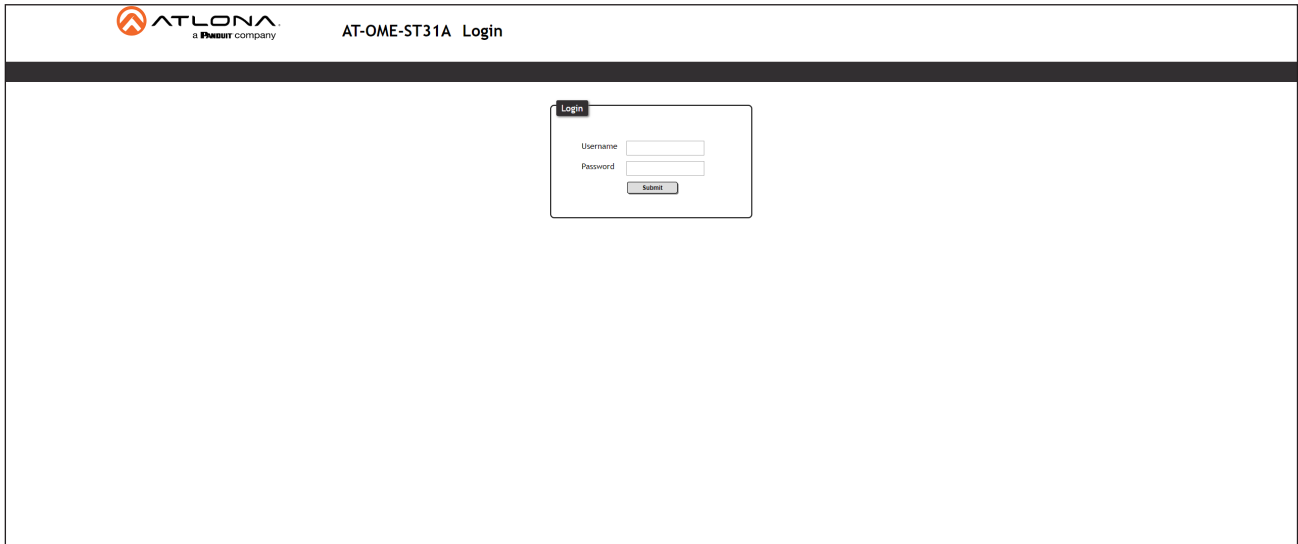


4. Click the **Choose File** button, under the **Firmware Update** section.
5. Browse to the location of the firmware file, select it, and click the **Open** button.
6. Click the **Update** button, under the **Firmware Update** section.
7. The following message box will be displayed.



Update Instructions

- Click the **OK** button to begin the firmware update process. Click the **Cancel** button to cancel the process.
- After the firmware update process is complete, the **Login** screen will be displayed.



Using USB

Requirements:

- AT-OME-ST31A
- Firmware file
- Computer running Windows
- USB-A to USB mini-B cable

1. Disconnect power from the AT-OME-ST31A.
2. Connect a USB-A to USB mini-B cable between the PC and the **FW** port on the AT-OME-ST31A. The unit will be powered by the USB cable.
3. The USB UPDATE folder will be displayed.

If this folder is not displayed, automatically, select the USB UPDATE drive from Windows Explorer.

4. Delete all files from the USB UPDATE drive, if any are present.
5. Drag-and-drop the firmware file to the drive.
6. After the file has been copied, disconnect the USB cable from both the computer and the AT-OME-ST31A.
7. The firmware update process is complete.