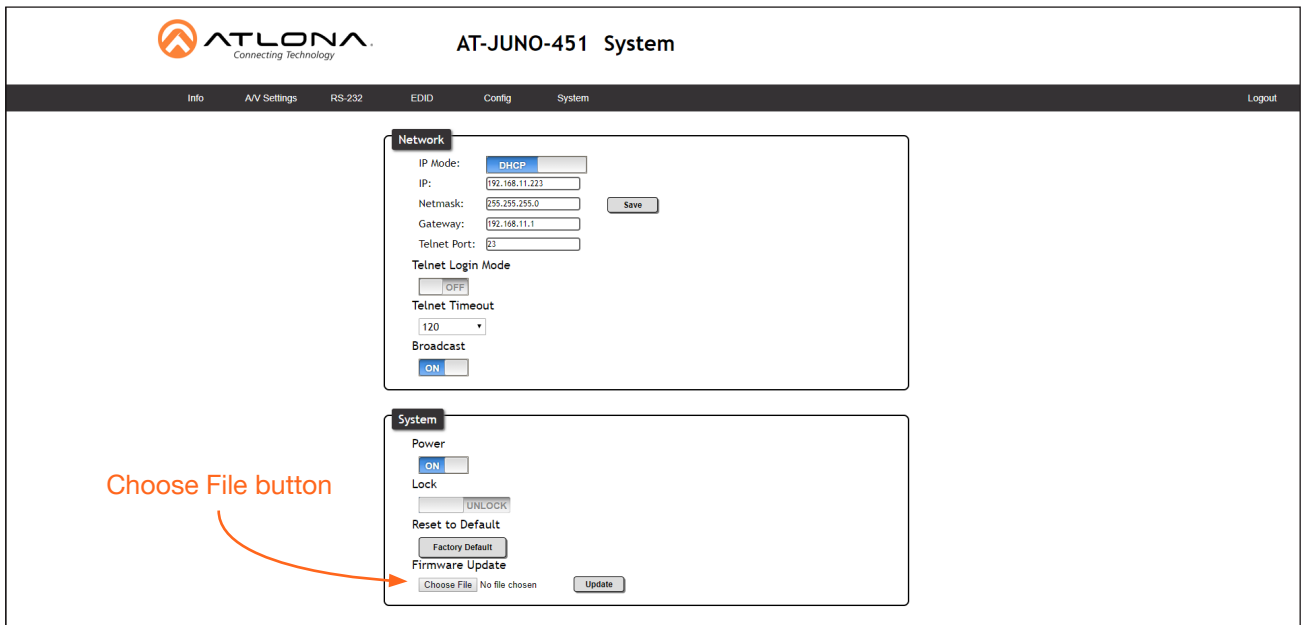


Update Instructions

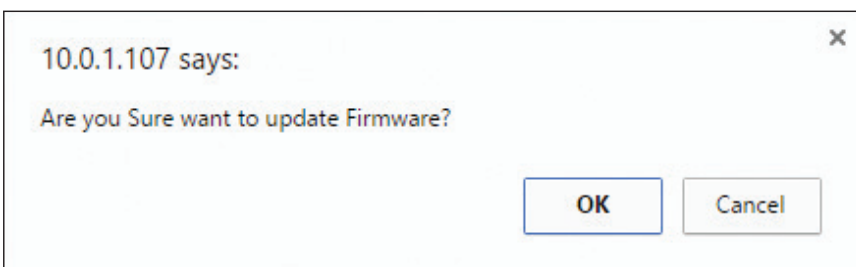
The AT-JUNO-451 can only be updated through the webGUI.

Requirements:

- New firmware - Downloaded from atlona.com
 - IP address of the AT-JUNO-451
 - Computer on the same network as the AT-JUNO-451
 - Username and password to access the web GUI.
1. Connect an Ethernet cable from the computer, containing the firmware, to the same network where the AT-JUNO-451 is connected.
 2. Go to the **System** page in the web GUI.



3. Click the **Choose File** button, under the **System** section.
4. Browse to the location of the firmware file, select it, and click the **Open** button.
5. Click the **Update** button.
6. The following dialog will be displayed.



7. Click the **OK** button to begin the firmware update process. Click the **Cancel** button to cancel the process.

After the update process has completed, the AT-JUNO-451 will automatically reboot, and the **Login** screen will be displayed.