

## Update Instructions

Updating the firmware can be completed using either the USB interface or the web GUI. Atlona recommends using the web GUI for updating the firmware. However, if a network connection is not available, the AT-HDR-M2C firmware can be updated using a USB-A to USB mini-B cable.

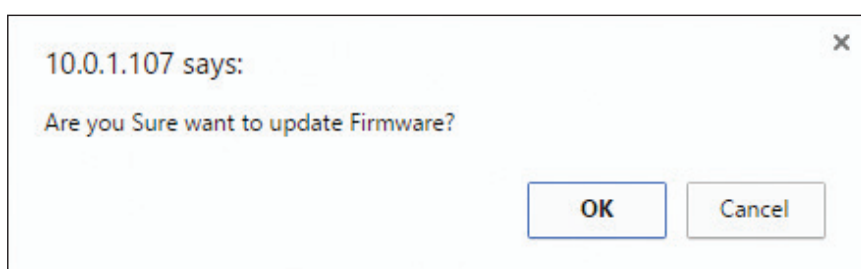
### Using the Web GUI

#### Requirements

- AT-HDR-M2C
  - Firmware file (.bin file)
  - Computer
1. Connect an Ethernet cable from the computer, containing the firmware, to the same network where the AT-HDR-M2C is connected.
  2. Go to the System page in the web GUI.

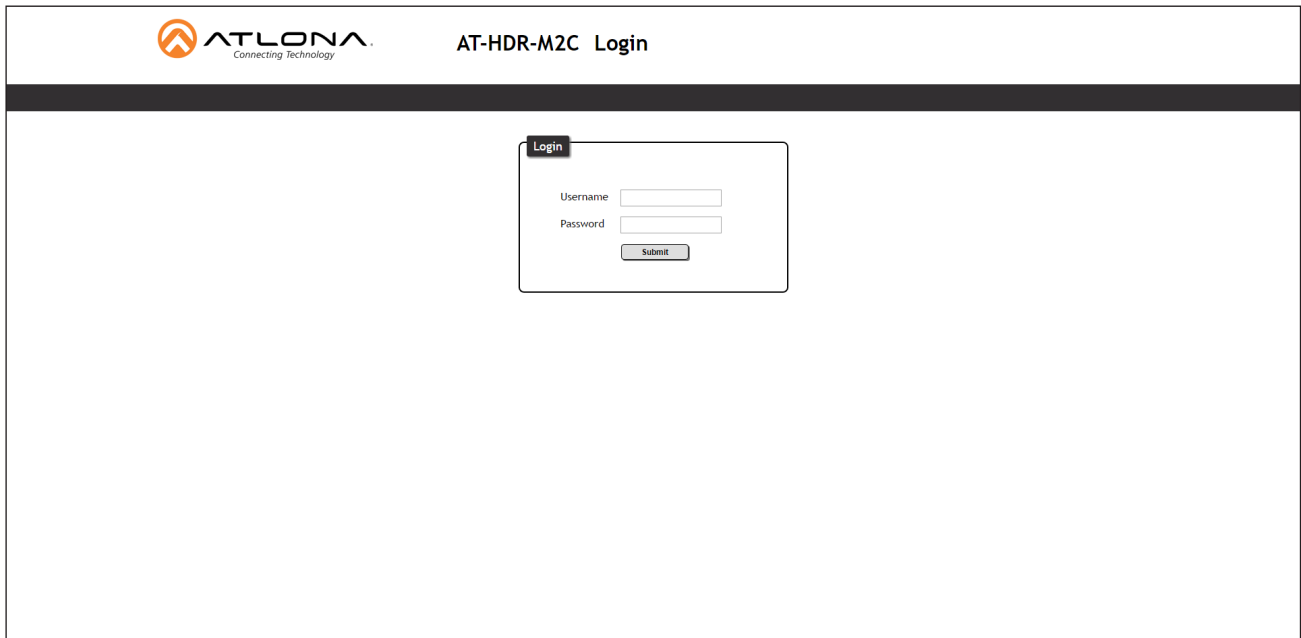


3. Click the **Choose File** button, under the **Firmware Update** section.
4. Browse to the location of the firmware file, select it, and click the **Open** button.
5. Click the **Update** button.
6. The following dialog will be displayed.



## Update Instructions

7. Click the **OK** button to begin the firmware update process. Click the **Cancel** button to cancel the process.
8. The update process will take approximately 60 seconds and will automatically reboot the AT-HDR-M2C.
9. After the firmware update process is complete, the **Login** screen will be displayed.



ATLONA  
Connecting Technology

AT-HDR-M2C Login

Login

Username

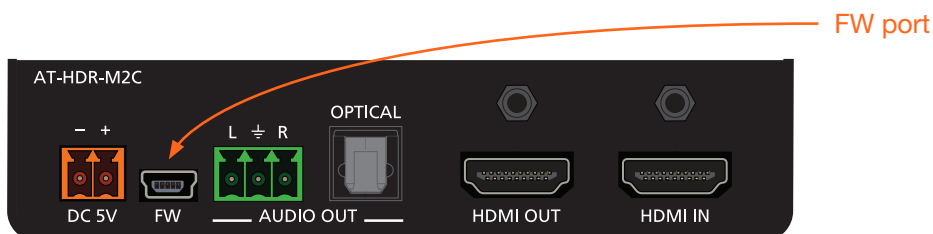
Password

### Using USB

#### Requirements

- AT-HDR-M2C
- Firmware file (.bin file)
- Computer
- USB-A to USB mini-B cable

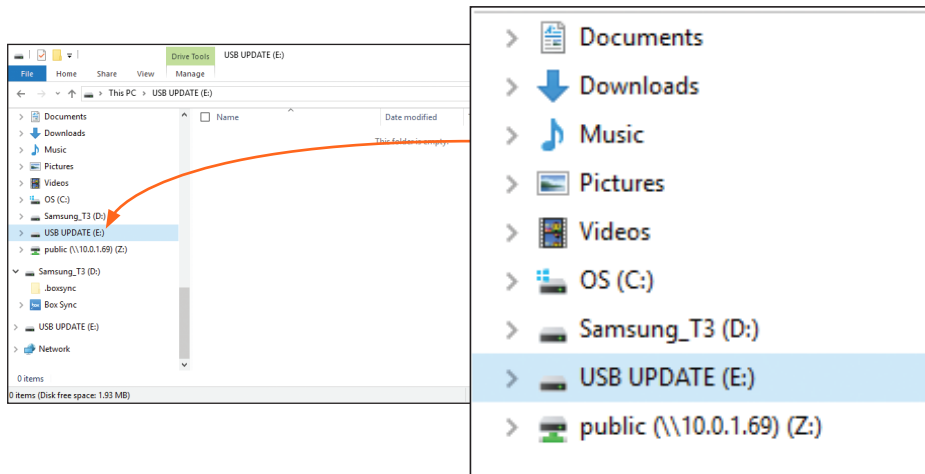
1. Make sure the AT-HDR-M2C is powered.
2. Connect the USB-A to USB mini-B cable from the computer to the **FW** port on the AT-HDR-M2C.



3. After a moment, the USB UPDATE folder will be displayed.

If this folder is not displayed, automatically, select the USB UPDATE drive from Windows Explorer, as shown on the next page.

## Update Instructions



4. Delete all files from the USB UPDATE drive, if any are present.
5. Drag-and-drop the firmware file to the drive.
6. After the file has been copied, disconnect the USB cable from both the computer and the AT-HDR-M2C.
7. The AT-HDR-M2C will automatically reboot, completing the firmware update process.