

AT-HD-M2C Updating Guide

New firmware to update, fix, or change functionality of products becomes available occasionally. Atlona has made this as easy as possible for updating on the job by simply downloading from Atlona.com and installing through a mini USB to USB A cable.

NOTE: Only use a Windows computer to update. Use of an Apple computer to update will cause the device to be unusable until a Windows computer is used to update.

I. Requirements:

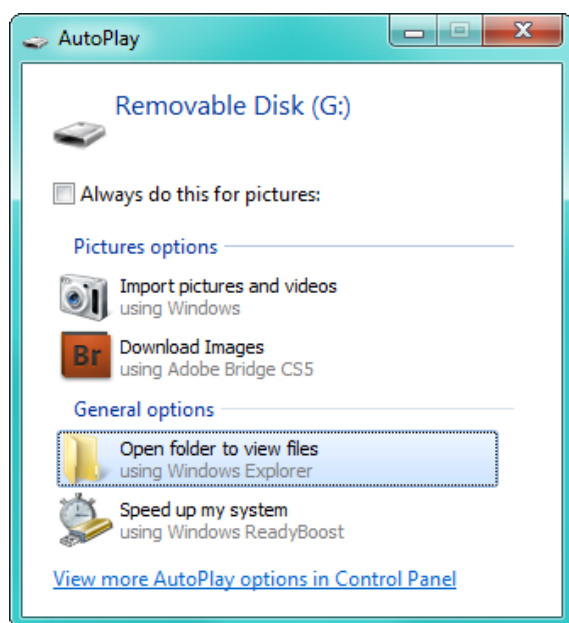
- a. AT-HD-M2C w/ power supply
- b. Desktop PC or Laptop PC w/ USB A port
- c. Mini USB to USB A cable

II. Installation:

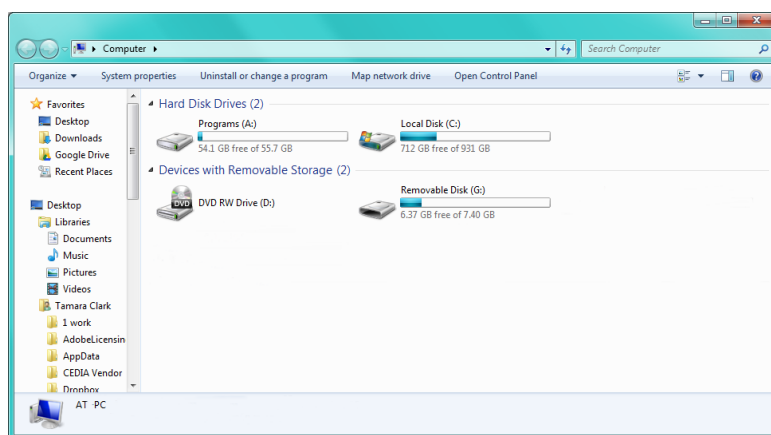
- a. Connect AT-HD-M2C and PC by using a mini USB to USB A cable.

III. Firmware Upgrade:

- a. Click the option, "Open folder to view files" (if AutoPlay runs)



If the computer does not auto detect the connection, open "My Computer" and select the USB drive.



- b. Delete any files in the folder. (There should be only 1)
 - c. Copy and paste the new firmware into the folder
 - d. Disconnect the USB cable from the HD-M2C and computer
 - e. Unplug the power cable from the HD-M2C
 - f. Plug the power cable back in to the HD-M2C, the unit should start up automatically
- The update should be complete