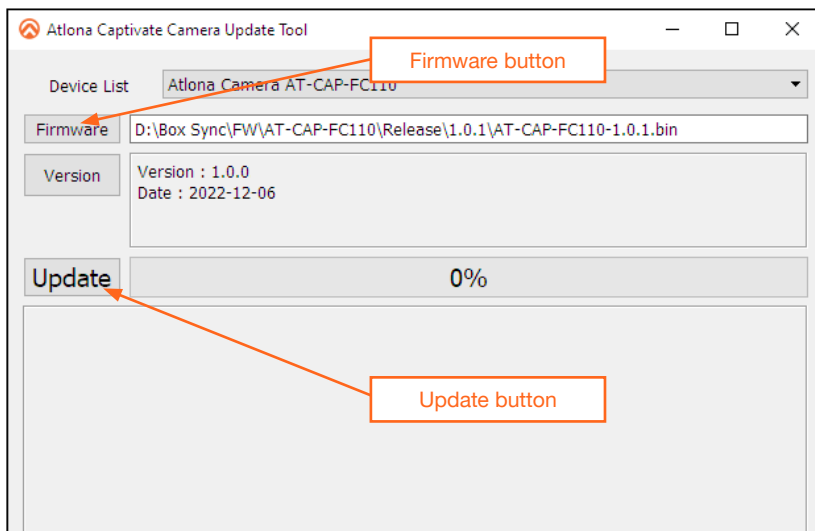


Update Instructions

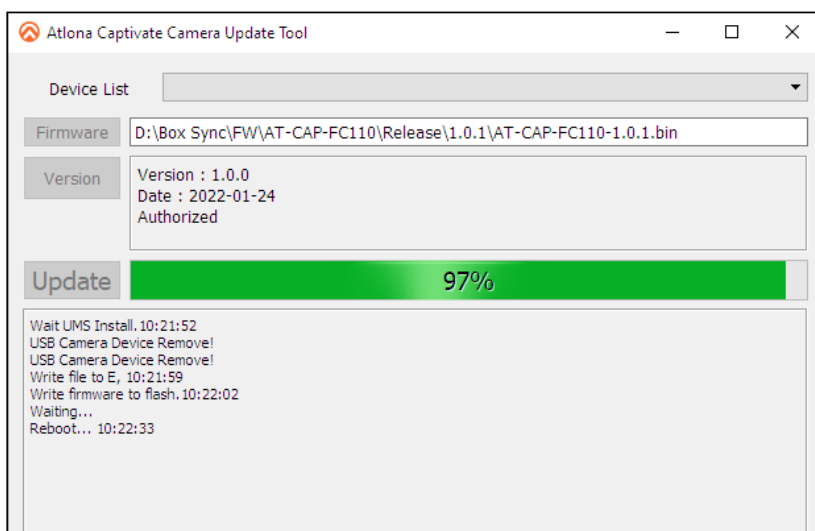
Requirements:

- AT-CAP-FC110
- AT-CAP-FC110 Update Tool
- Firmware file

1. Download both the AT-CAP-FC110 Update Tool and the firmware file from the **Firmware** tab on the product page.
2. Unzip the contents of the Update Tool file on the same computer to which the AT-CAP-FC110 is connected and verify that the AT-CAP-FC110 is connected to the computer.
3. Launch the Update Tool by double-clicking the `CaptivateCameraUpdateTool.exe` file. The Atlona Captivate Camera Update Tool dialog will be displayed.
4. Click the **Firmware** button to select the firmware file. Once selected, the full path to the firmware file will be displayed in the text box, next to the **Firmware** button.

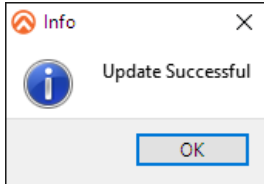


5. Click the **Update** button to begin the firmware update process. A progress bar will denote the status of the update process. The camera will automatically be rebooted after updating.



Update Instructions

6. After the update process has completed and the camera has rebooted, the following message box will be displayed.



7. Click OK to dismiss the message box and return to the Update Tool dialog.
8. Exit the Update Tool.
9. The AT-CAP-FC110 is ready for operation.