

# AT-HDVS-TX-WP Updating Guide

New firmware to update, fix, or change functionality of products becomes available occasionally. Atlona has made this as easy as possible for updating on the job by simply downloading from Atlona.com and installing through a mini USB to USB A cable.

**NOTE:** Only use a Windows computer to update.

**\*\*Use of an Apple computer to update can only be done if the product has firmware V2.1\*\***

## I. Requirements:

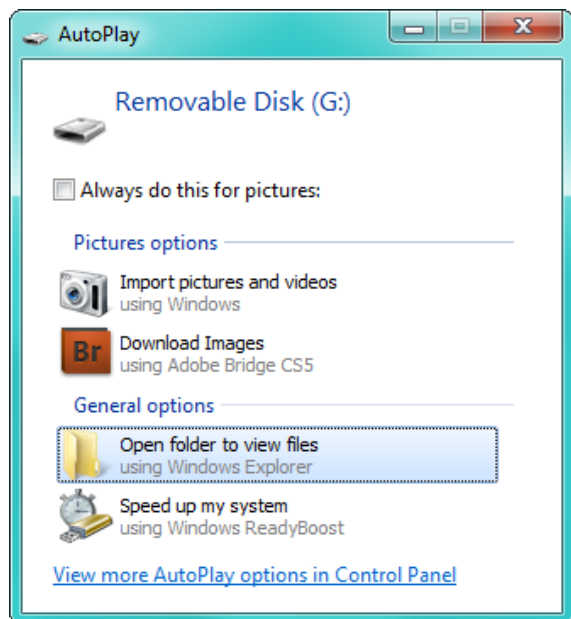
- AT-HDVS transmitter product
- Desktop PC or Laptop PC w/ USB A port
- Mini USB to USB A cable

## II. Installation:

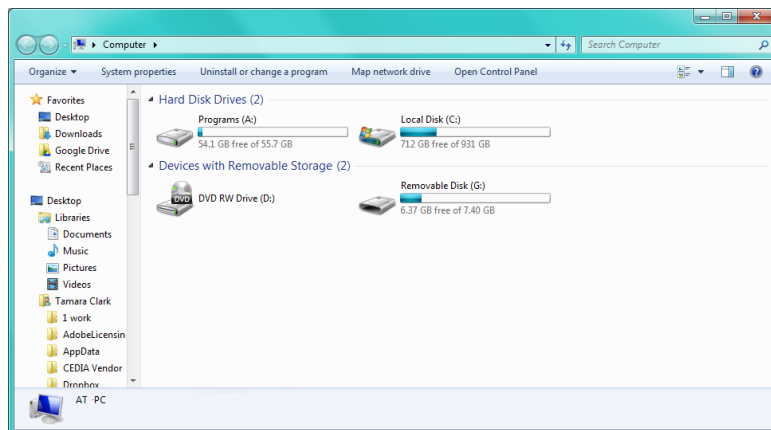
- Remove the 3 locking screws of the ports, then the faceplate to expose the mini USB port  
**Note:** Avoid contact with the PCB board in the wall plate, electrostatic discharge (ESD) may damage sensitive chips.
- Press and hold the "Display On/Off" button
- Connect AT-HDVS-TX-WP and PC by using a mini USB to USB A cable.
- Release the "Display On/Off" button

## III. Firmware Upgrade:

- Click the option, "Open folder to view files" (if AutoPlay runs)



If the computer does not auto detect the connection, open "My Computer" and select the USB drive.



- Delete any files in the folder. (There should be only 1)
- Copy and paste the new firmware into the folder
- Disconnect the USB cable from the HDVS and computer
- Replace the faceplate and locking screws
- Plug the category cable back in to the HDVS transmitter

**Note:** The unit should start up normally as long as it is receiving power from the receiver  
The update should be complete

**Note:** For full functionality and features, ensure the transmitter and receiver are using compatible firmware

	RX firmware V 1.1.0	RX firmware V 1.2.4	RX firmware V 2.1.0	RX firmware V 2.2.4
<b>TX firmware V 1.1.0</b>	Compatible	Not Compatible	Compatible	Not Compatible
<b>TX firmware V 1.2.4</b>	Not Compatible	Compatible	Not Compatible	Compatible
<b>TX firmware V 2.1.0</b>	Compatible	Not Compatible	Compatible	Not Compatible
<b>TX firmware V 2.2.4</b>	Not Compatible	Compatible	Not compatible	Compatible
<b>GUI Version</b>	1.1.0	2.2.4	1.1.0	2.2.4