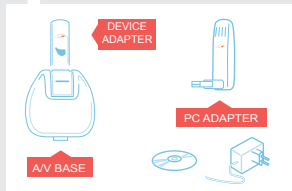


GETTING STARTED

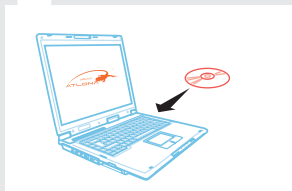
Note: For further information please refer to the User Guide included in the Installation CD

1



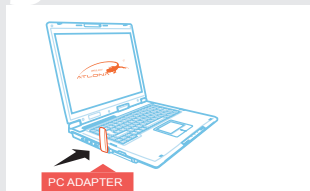
The package includes:
CD, PC Adapter, A/V Adapter
(Device Adapter + A/V Base),
and power supply.

2



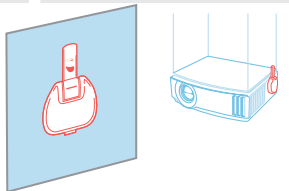
Insert the CD and install
software drivers. (A new gray
icon appears in system tray).

3



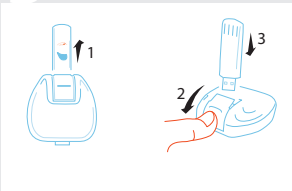
Plug the PC Adapter to a USB
port on your PC.
(Tray icon turns red).

4



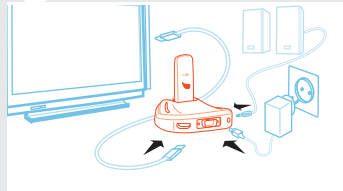
For vertical mounting:
Place the A/V Adapter on a
vertical surface
(projector, wall, display).

5



For table top positioning:
1. Remove Device Adapter
from A/V Base.
2. Slide shutter to show top
USB port.
3. Re-attach Device Adapter.

6



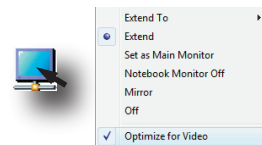
Connect the A/V Adapter using an
HDMI cable or using VGA and
audio (3.5mm plug) cables.
Connect the power cable. You're
done!
(Tray icon turns green ,display
icon is on).



Quick Tips for Best Performance

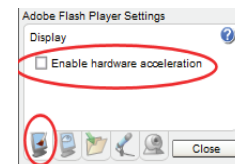
Playing video from your PC?

1. It is recommended to use Extend Mode.
2. If available it is recommended to use Optimize for Video Mode.



Streaming video from the internet (e.g. Youtube)?

1. Right click on actual video
2. Select settings
3. Under Adobe Flash Player you will find a check box
"Enable Hardware Acceleration"
4. Un-check the check mark and close the window



Using Windows Vista?

It is recommended to use the AERO
Desktop Theme.

Problems?

Right-click the Wireless USB Manager
taskbar icon and select Help,
or see Troubleshooting in the User
Guide (available on the installation CD).

Wireless USB A/V Adapter Set