



ATLONA
Connecting technology to your world

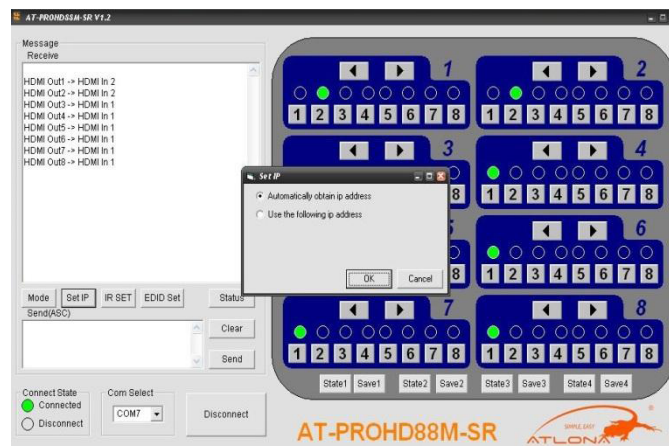
Static IP setup

I. Requirements:

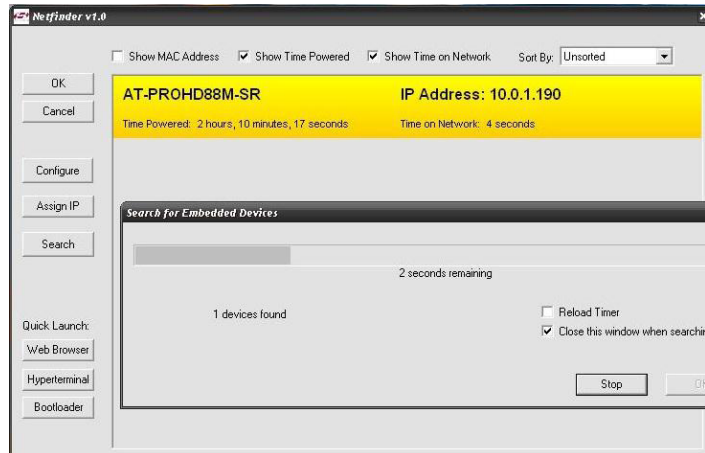
AT-PROHD88M-SR
PC/Laptop
Windows operating system "XP"
RS-232 to USB cable

II. Please follow the steps below:

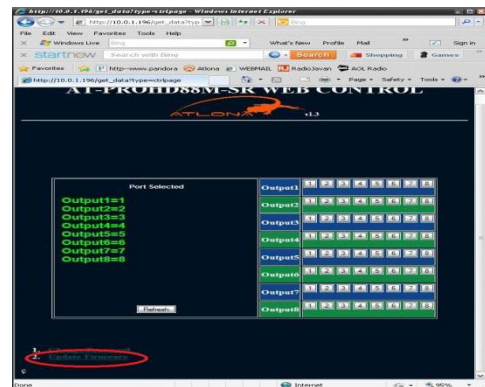
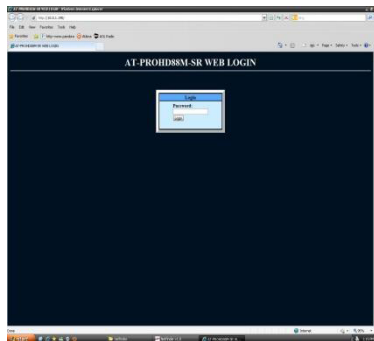
- A. Run "COMCTL_AT-PROHD88M-SR", click the Set IP button.
- B. Mark "Use the following ip address" and enter your desired IP.



- C. Next, run the “Netfinder” software, and then click the search button.
- D. “Netfinder” will display available IP address. Select yellow highlighted IP address then click the “Web Browser” button.



- E. Web login page will open, enter password (default password is “0000000000”).
- F. Once logged in, select “Update Firmware” at the bottom of the page.

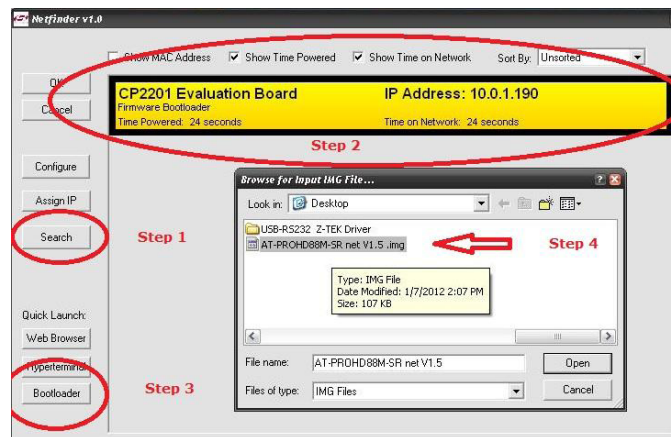


- G. After selecting “update firmware” the following screen will appear:

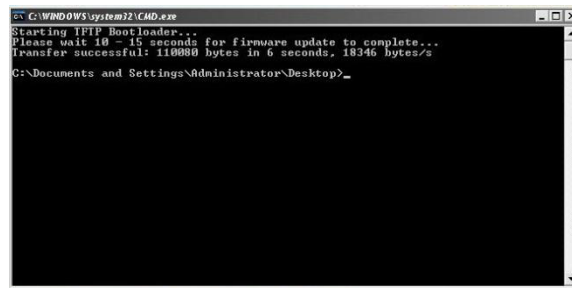


H. Run "Netfinder" again if you closed it, if not follow the next steps

1. Click the search button.
2. Select the IP address highlighted in yellow.
3. Click "Bootloader"
4. Browse and select the "img" file and open.



5. The upgrade will automatically start.



I. After the above process is finished Netfinder will display static IP.

