

velocity[™]

by Atlona

Integration Note for Yealink

Version Information

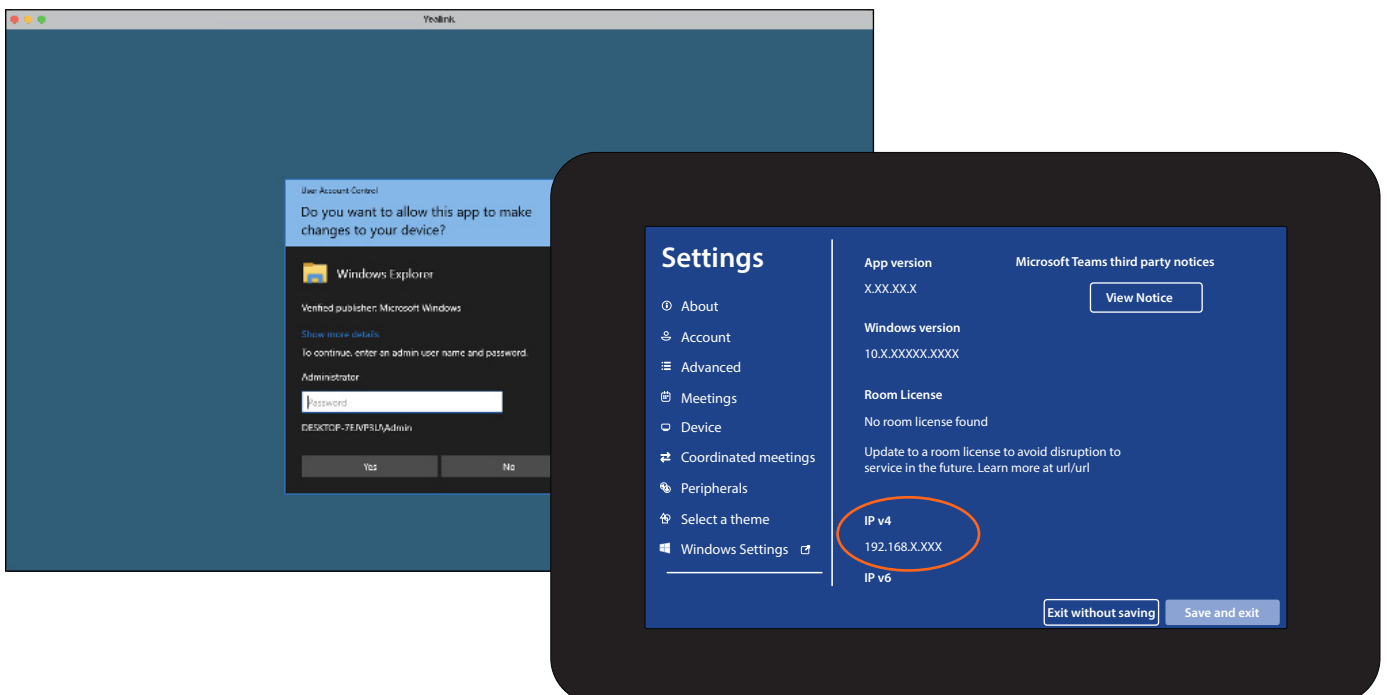
Version	Release Date	Notes
1	July 2023	Release

Integration Note

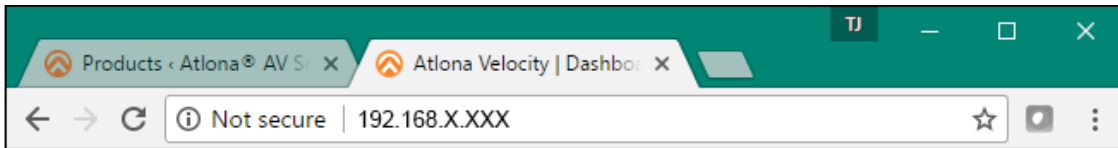
For Yealink integration with Velocity, Yealink must be fully set up and on the same network or subnet. The devices must be able to speak to each other. Velocity needs to have a site and room created before starting integration with the Yealink.



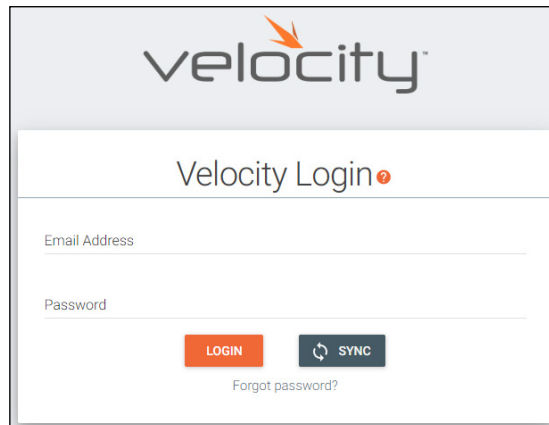
1. Open the Yealink panel and select More. A menu will open from the right.
2. Select Settings from the menu. A new screen will open.
3. Enter in the Yealink password. This will open to the about page.
4. Copy down the IPv4 address from the panel.
5. After getting the IP address, set the panel aside, it will be needed later.



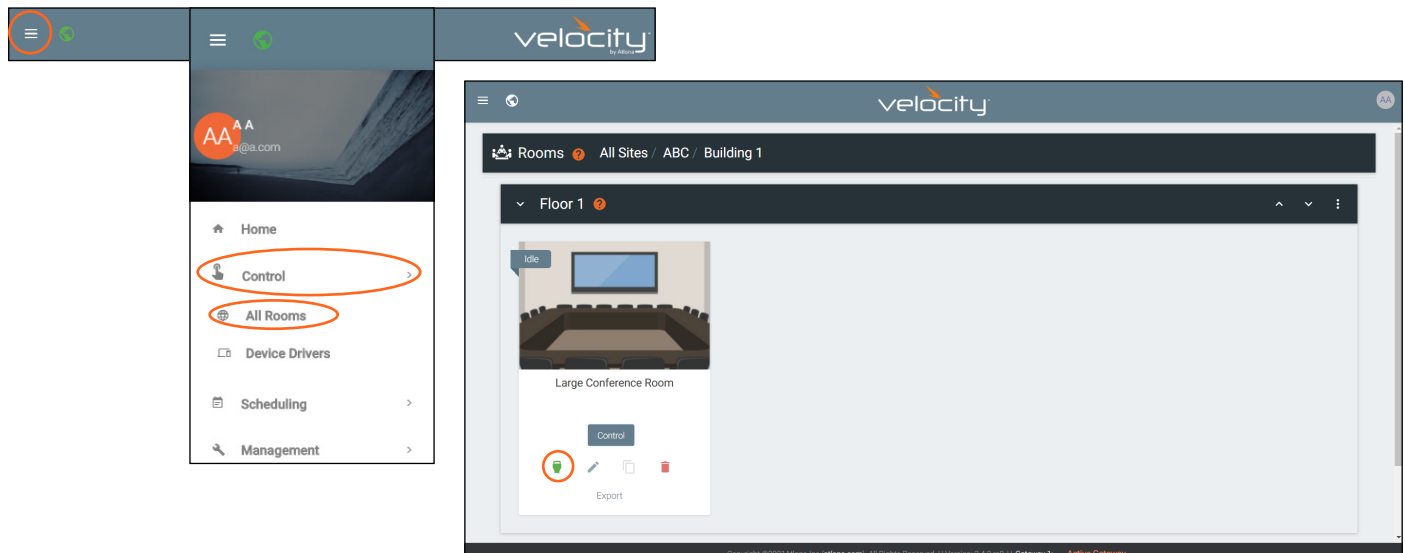
6. Open a browser on a local network computer.
7. Type Velocity's IP address into the current address bar.



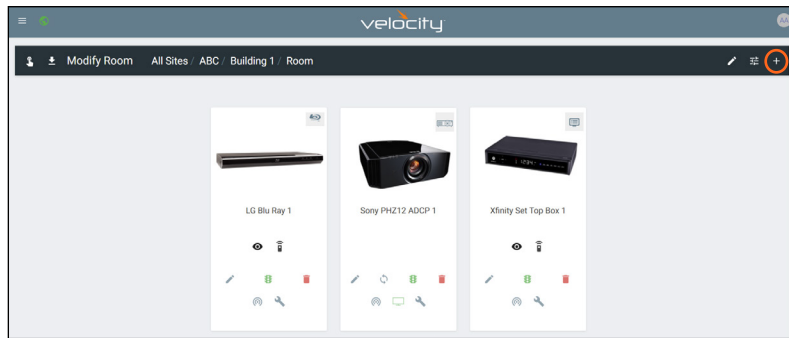
8. Log into Velocity. A new screen will open.



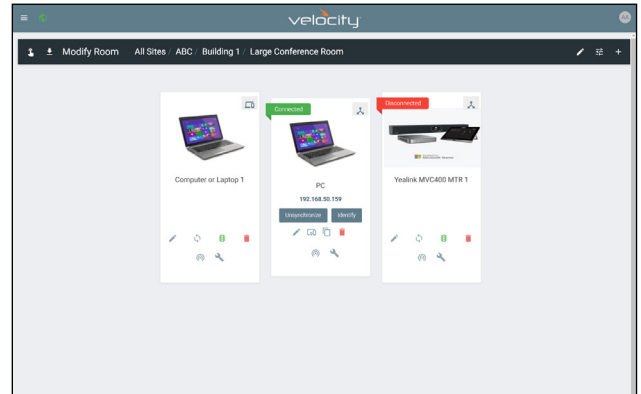
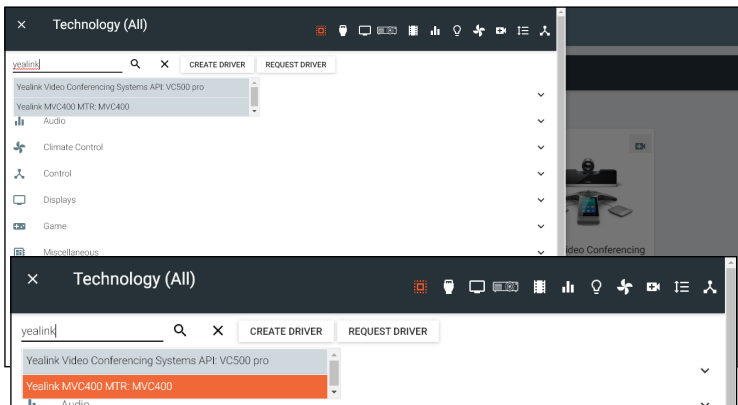
9. Select the = button at the top right corner to open the navigation.
10. Select **All Rooms** from the control menu.



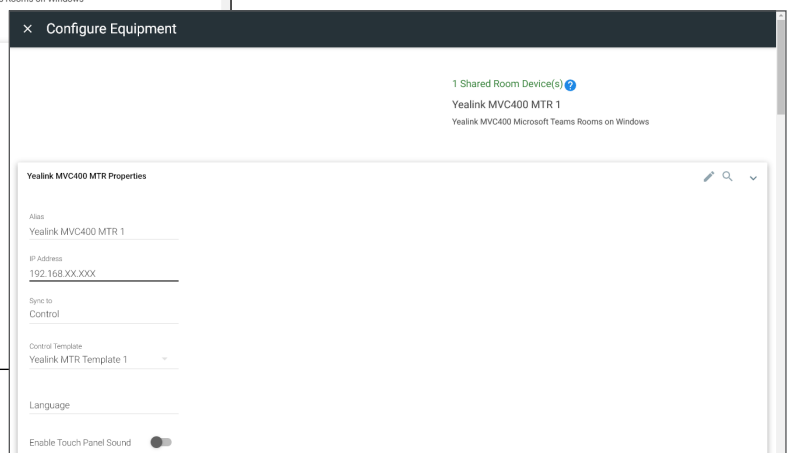
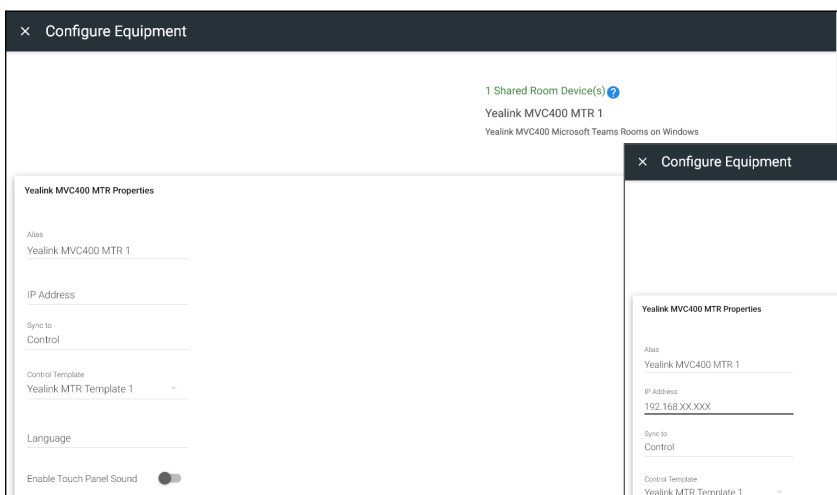
11. Select **Edit Room Technology** for the room the Yealink will be located.
12. Once the Modify Room page is open, select the + button. A new navigation will slide open.



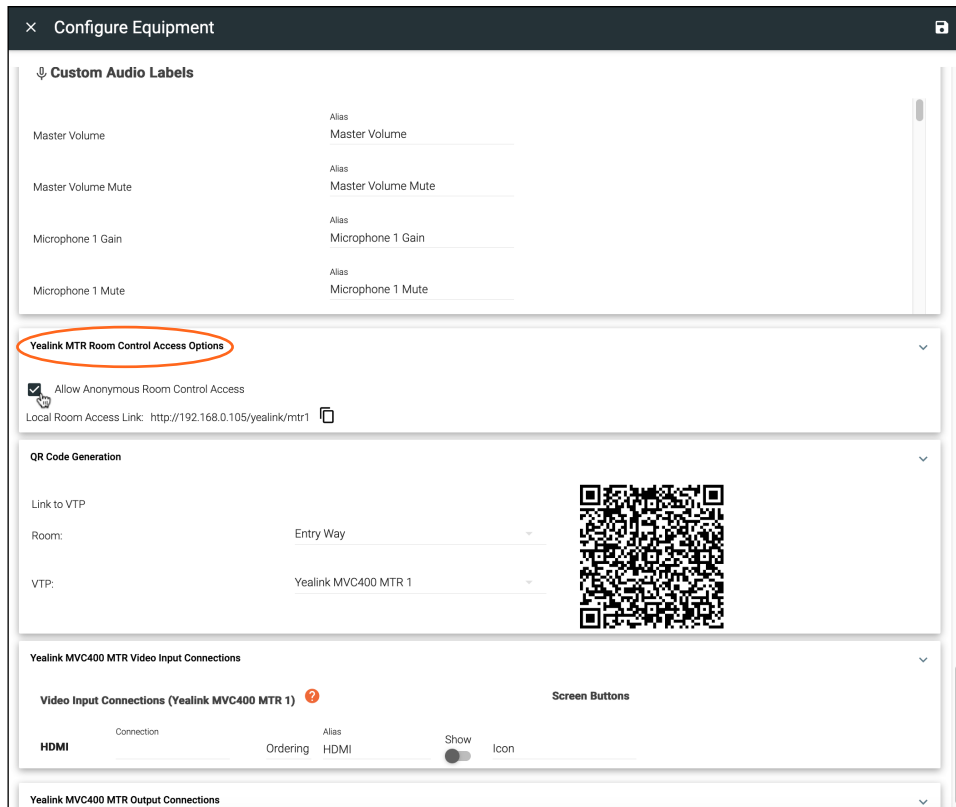
13. Type Yealink MVC into the search bar.
14. Select the **Add** button next to Yealink MVC. The Yealink tile will appear in the room.
15. Click outside the device menu or select the X next to Technology to close the menu.



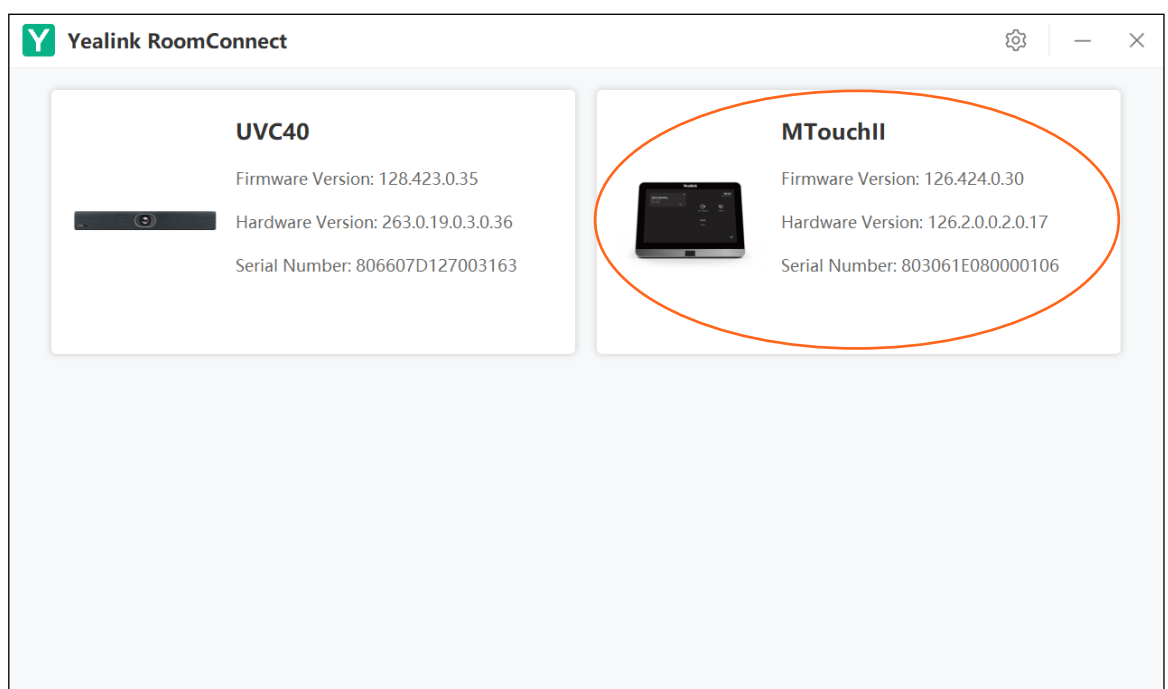
16. Select the **Edit** button on the Yealink tile. A new menu will open.
17. Enter the IP address of the Yealink panel into the IP Address field.



18. Scroll down to the Room Access Options section and check the Allow Anonymous Room Control Access box.
19. Copy the Local Room Access Link. The link should be the `http://local IP/yealink/mtr1` (note the number will go up if multiple are created).
20. Select the Window's settings on the Yealink panel to switch to Windows mode.



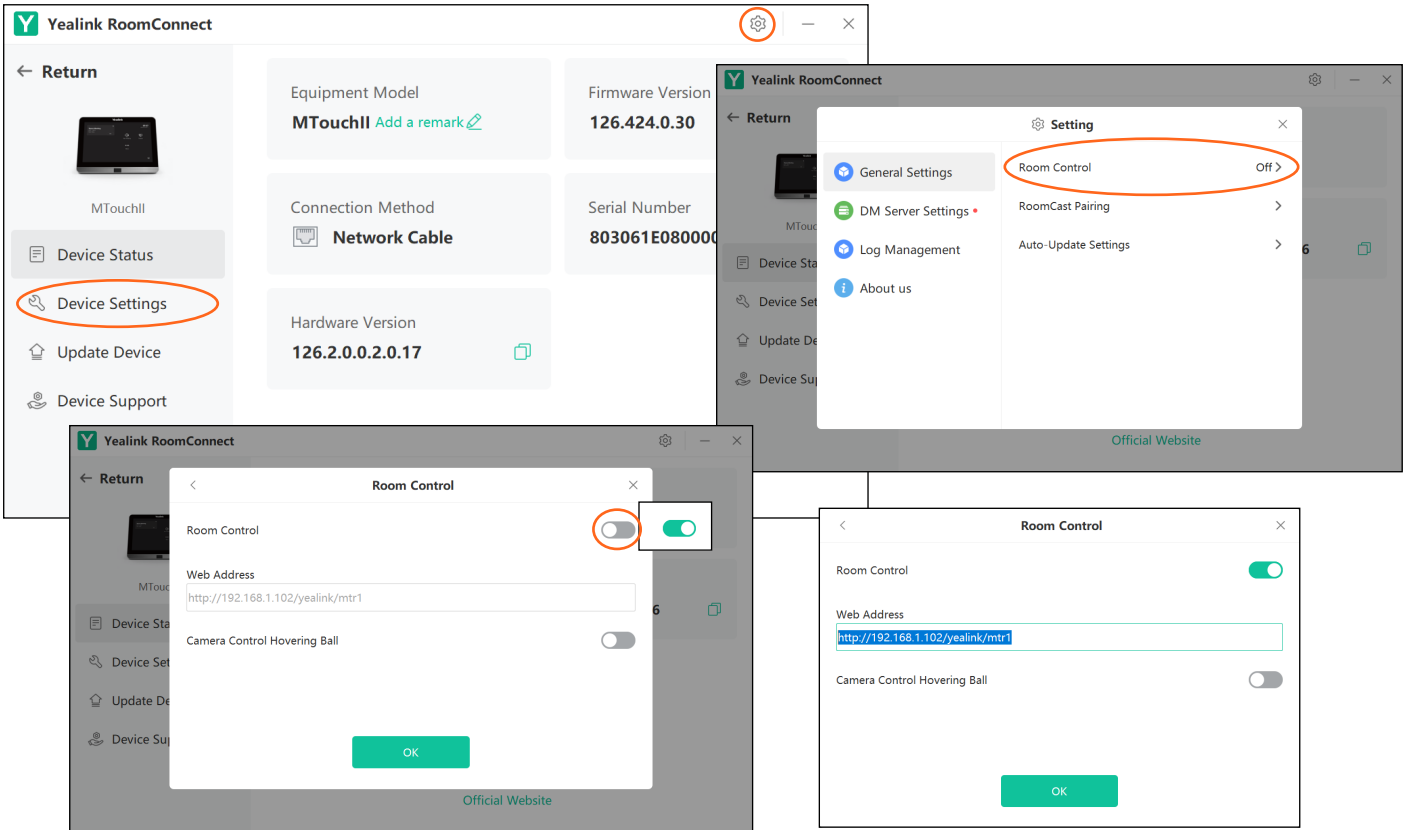
21. Select Administrator and enter the login information.
22. Launch the Yealink RoomConnect application. A new screen will open.



23. Select the device to edit. A new screen will open.
24. Select the settings button. A pop up will appear.

25. Select **Room Control** from the menu. A new screen will appear.

a. If an older version of Yealink RoomConnect is being used and there is not Room Control option, the newest version will need to be download. It can be found at: <https://support.yealink.com/en/portal/docList?archiveType=software&productCode=92d99464dabf696c>.

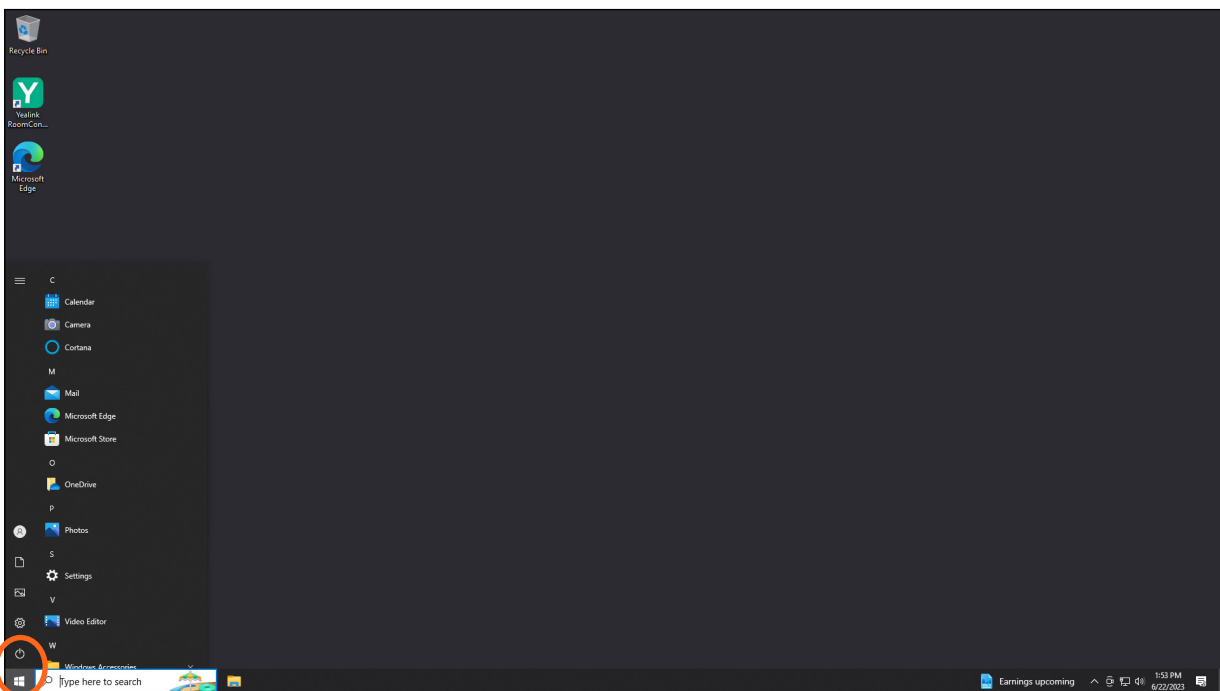


26. Select the Room Control slider to enable linking.

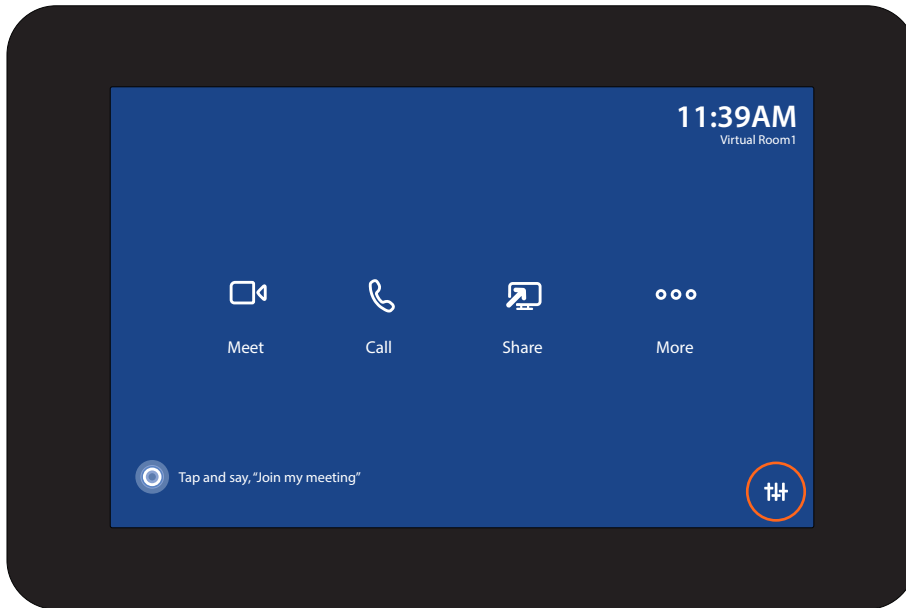
27. Enter the copied link into the Web Address field and select **OK**.

28. The panel will now be set up. Select the Windows icon in the bottom left corner of the screen. A menu will open.

29. Select the power icon and restart the panel to get to the teams application.



30. Once the panel restarts, log in again and select the Room Control button in the bottom right corner of the screen.



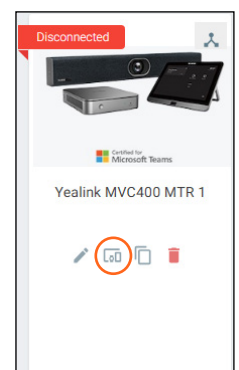
31. Select **Room Control** from the side menu. The Velocity control screen will open on the right side of the panel. It may take up to 2 minutes for Velocity to load and it will display a blank white page until it syncs.



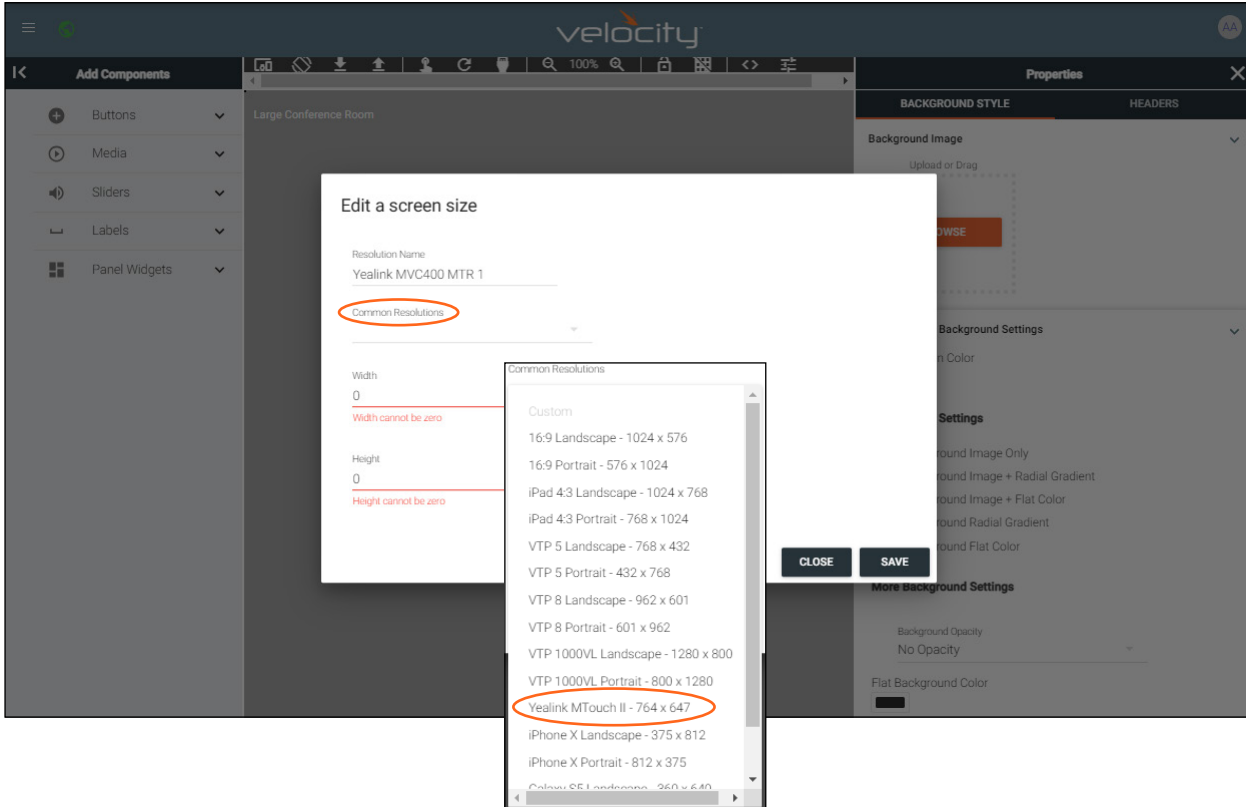
All equipment added to the Velocity room will appear on the control screen. Use Velocity room edit and macros to adjust the room to the needed set up. A custom UI can be created by selecting the Custom UI Designer icon within Velocity.

Optional A custom UI can be created by selecting the Custom UI Designer icon within the Velocity software. A new screen and pop up will appear.

i NOTE: If the Velocity service is shut down overnight or during the weekends, Yealink may show disconnected in the room when turned back on. Navigate to the Room Control screen on the Yealink panel and refresh the Velocity equipment page a few times to show connected again. The Yealink will still function while it shows disconnected, as long as it is still on the network.



To ensure the correct screen size is created, select the Custom Resolutions drop down. When the drop down menu appears, select Yealink MTouch II to populate the correct resolution. Once selected, press the Save button. For further customization, see the [Velocity Manual](#).



Copyright, Trademark, and Registration

© 2023 Atlona Inc. All rights reserved. "Atlona" and the Atlona logo are registered trademarks of Atlona Inc. Pricing, specifications and availability subject to change without notice. Actual products, product images, and online product images may vary from images shown here.

All other trademark(s), copyright(s), and registered technologies mentioned in this document are the properties of their respective owner(s).