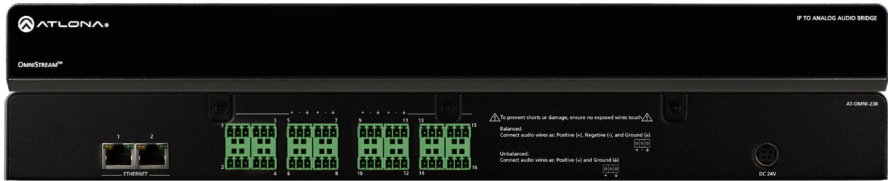


## OmniStream Multi-Channel Dante Networked Audio Interface AT-OMNI-238



The Atlona OmniStream™ 238 (AT-OMNI-238) receives audio streamed from OmniStream encoders, and delivers up to 16 audio outputs, configurable as eight stereo pairs or sixteen mono channels. It is part of the OmniStream R-Type Series, designed for high performance, flexible distribution of AV over Gigabit Ethernet in residential and light commercial applications. OmniStream features industry standard, AES67-compatible audio over IP streaming. Up to sixteen channels of PCM audio can be received by the OmniStream 238. An audio stream can be routed to one or more unbalanced or balanced outputs, each with programmable gain control. The OmniStream 238 is ideal for feeding audio from HDMI sources into a whole-house audio system, as well as multiple audio zones in a commercial AV application.

### Package Contents

1 x OmniStream 238	1 x Wall/Rack mounting brackets
16 x Captive screw connector (3 pin)	1 x Installation Guide

### Operating Notes

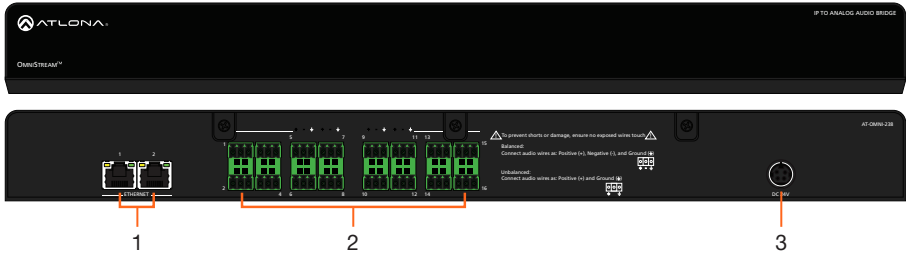
- To ensure stable connection, disable 802.3 Energy Efficient Ethernet (EEE) on connected Ethernet switches.
- OmniStream requires AMS 2.0 (Atlona Management System) for discovery and management. AMS 2.0 is available from <https://atlona.com/AMS> for free. Two options can be used for installation: The free Linux based software download or the easy to install server hardware (AT-AMS-HW).
- Connection issues may occur if control software is used over VPN. Ensure the software and OMNI-238 are on the same network.



**IMPORTANT:** Visit <http://www.atlona.com/product/AT-OMNI-238> for the latest firmware updates and User Manual.



## Panel Descriptions



### 1 ETHERNET

Connect one port to an Ethernet switch for audio streams and control and one port to another AT-OMNI-238 for up to 8 cascades.

### 2 LINE OUT

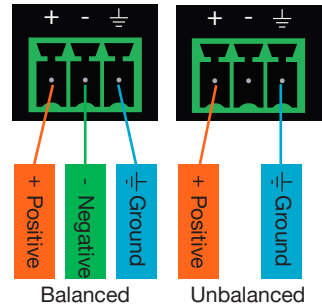
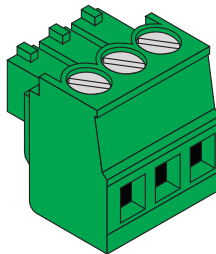
Connect to an audio DSP, amplifier, or other audio players/distribution devices.

### 3 DC 24V

Connect included power supply from an outlet to this port.

## Audio

Connect to an audio DSP, amplifier, or other audio distribution or player devices. Either balanced or unbalanced connections may be used.



## Installation

- 1 Connect an Ethernet cable from the network switch to one of the Ethernet ports.
- 2 Connect included DC 24V power supply into the unit and the wall/power management switcher.
- 3 \*Optional\* Connect an Ethernet cable from the remaining Ethernet port to one of the Ethernet ports of another AT-OMNI-238 for cascading without the need to connect each individual OMNI 238 directly to a network switch.
- 4 Connect captive screw connectors from the outputs to audio players/distribution devices.



### Mounting Instructions

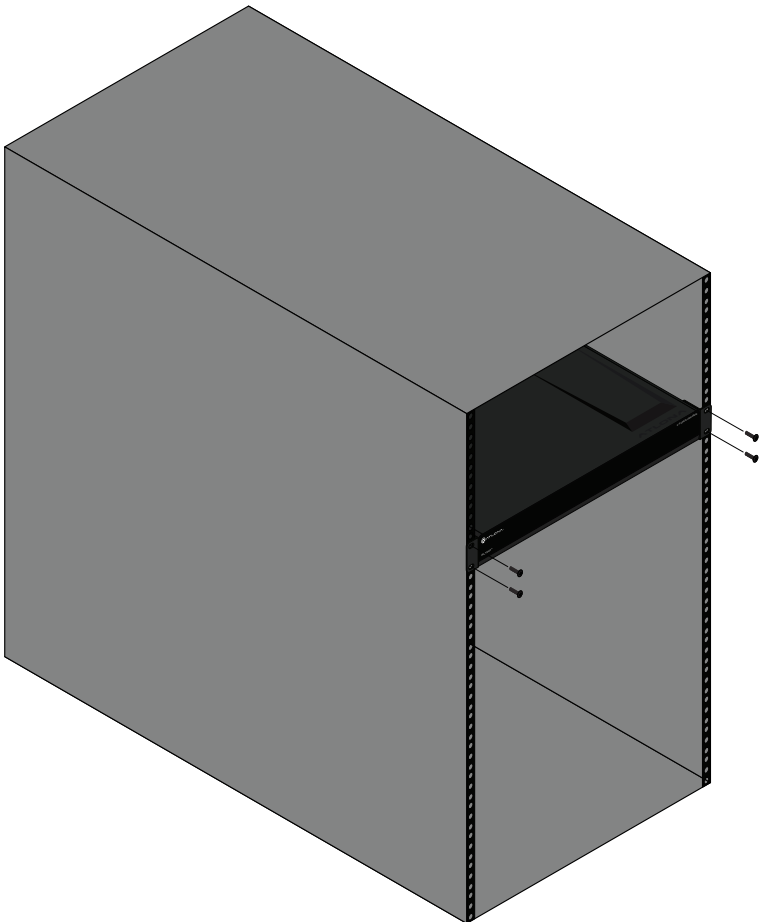
- 1 Remove the AT-OMNI-238 from the box.
- 2 Install the OMNI-238 into a rack using four rack screws.



**NOTE:** Increase the air flow as needed to maintain the recommended temperature inside the rack.



**NOTE:** Do not exceed the maximum weight loads for the rack. Install heavier equipment in the lower part of the rack for stability.



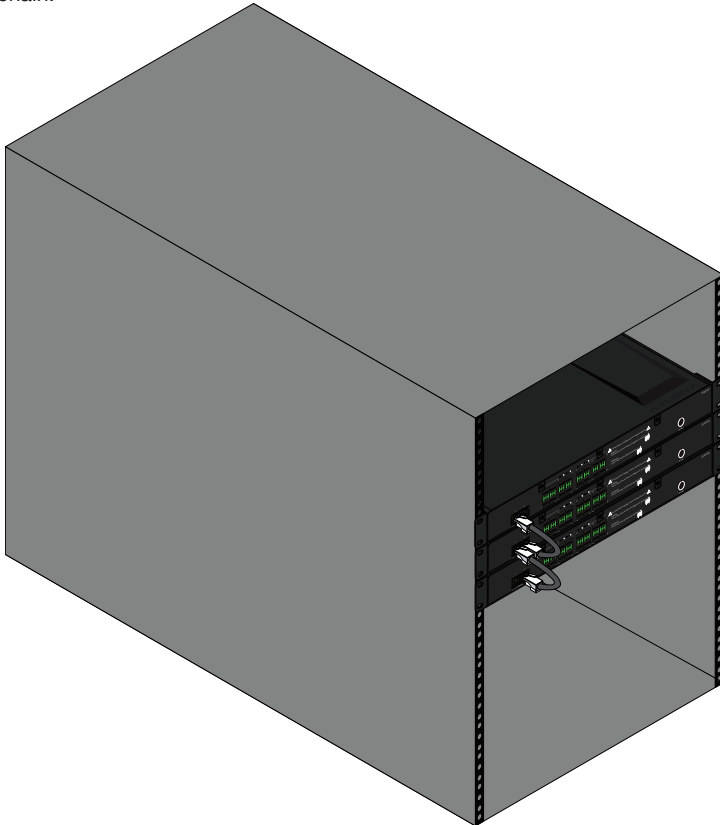


### Cascading Instructions

- 1 Install the units into a rack, following the mounting instructions.
- 2 Run an Ethernet cable from the unit connected to the network switch into the next OMNI-238.
- 3 Repeat the process for up to 8 units.



**NOTE:** For signal stability, it is recommended not to exceed 8 units in a cascade chain.



### IP

#### DHCP mode

By default, the OmniStream 238 is set to DHCP mode. In this mode, the unit is connected to the Local Area Network (LAN), and will automatically be assigned an IP address by the DHCP server.

#### Auto IP mode

If no DHCP server is detected after 30 seconds, then the unit will be placed in *Auto IP mode* and will be assigned a link-local IP address of 169.254.XXX.XXX.

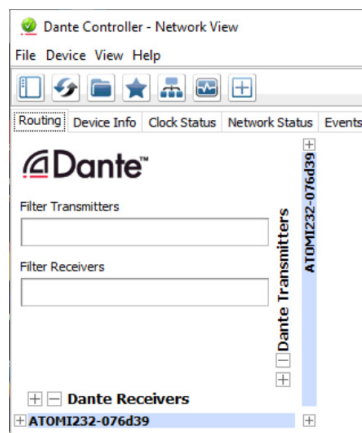
## Software

### Dante Controller

For use within a Dante system, Dante Controller is compatible with the AT-OMNI-238.

To download the software, go to <http://www.audinate.com>. The software will be found under **products > software > Dante Controller**. The download button is found on the right side of the page. Follow the instructions for downloading.

Once downloaded and installed, the AT-OMNI-238 will be automatically detected as long as the PC running Dante Controller and OmniStream 238 are on the same network.



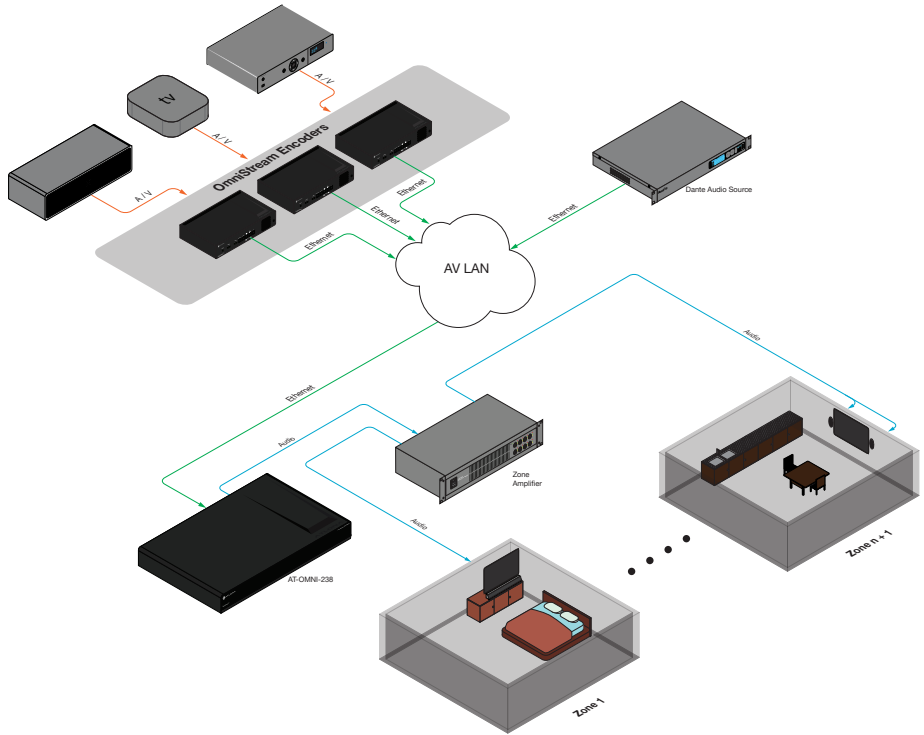
### AMS 2.0

For full configuration of the OMNI 238, AMS 2.0 is available from <https://atlon.com/AMS> for free. Two options can be used for installation: The free Linux based software download or the easy to install server hardware (AT-AMS-HW).

Once AMS has been set up:

- 1 Open a browser on the same network as AMS 2.0 and go to the IP of AMS 2.0.
  - a View the AMS 2.0 installation instructions on how to find the IP of the software.
- 2 Enter the login information on the AMS 2.0 web page, then click the **Login** button.
- 3 View the AT-OMNI-238 manual for routing and configuration.

### Connection Diagram





## Troubleshooting

Problem	Cause	Solution
I am not receiving any audio from my OMNI	Incorrect audio modes, stream names, or mute being active can cause audio loss.	<ul style="list-style-type: none"><li>• Log into AMS 2.0 and go to device configuration (view AT-OMNI-238 for instructions) to ensure that each audio stream is in the correct audio mode.</li><li>• In AMS 2.0, go to device configuration and ensure that each audio stream has the correct name.</li><li>• Within AMS 2.0, check that the audio channel has not been muted or that the volume is not turned all the way down.</li></ul>

